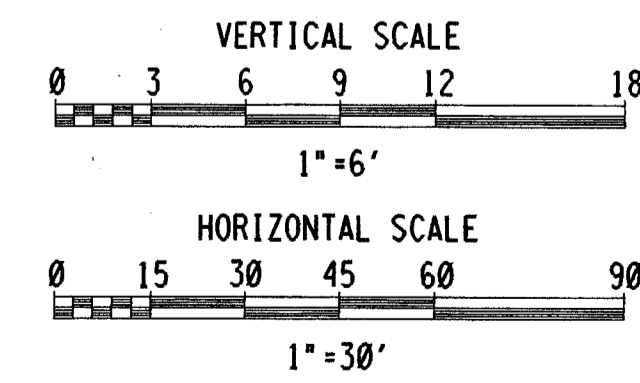
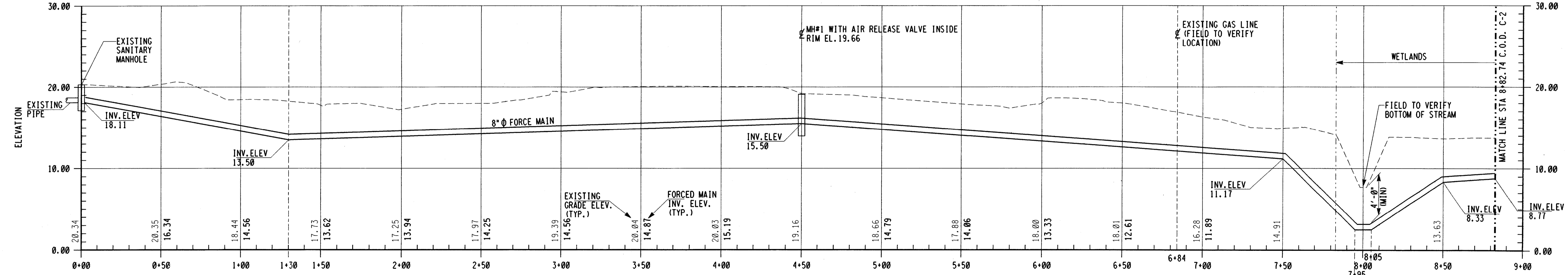


- NOTES:
- EXISTING INFORMATION SHOWN ON THIS DRAWING IS BASED ON TOPOGRAPHIC SURVEY DRAWING OF ATKINSON & WALTON, INC. CIVIL & ENVIRONMENTAL ENGINEERS LAND SURVEYORS & PLANNERS, 180 TUCKERTON ROAD, SUITE 11, MEDFORD, NEW JERSEY 08055, DATED AUGUST 25, 1995.
  - ELEVATIONS AND CONTOURS AS SHOWN HEREON ARE BASED ON USGS 1927 DATUM AS DETERMINED FROM SUPPLIED PLANS OF THE SIEVERS-SANDERS U.S. ARMY RESERVE CENTER, PEDRICKTOWN, NEW JERSEY.
  - BENCH MARK IS TOP OF SANITARY SEWER MANHOLE ON THE SOUTHERLY SIDE OF WEST ROAD BETWEEN SOUTH AVENUE AND DEPOT AVENUE AND DIRECTLY OPPOSITE THE PUMP HOUSE FOR THE SEWERAGE TREATMENT PLANT; ELEV. 14.15.
  - WETLANDS DELINEATION IS BASED ON A WETLANDS STUDY BY ATKINSON & WALTON, INC., DATED SEPTEMBER 1, 1995.
  - LIMITS OF WORK ARE NOT IN THE 100 YEAR FLOOD PLAIN.
  - LOCATIONS OF EXISTING UTILITIES SHOWN ON DRAWINGS C1 THRU C5 ARE APPROXIMATE AND SHOULD BE VERIFIED IN THE FIELD.

- LEGEND:
- EXISTING WATER VALVE
  - EXISTING FIRE HYDRANT
  - ⊕ EXISTING POLE
  - ⊘ EXISTING LIGHT POST
  - EXISTING MANHOLE
  - MH#1 NEW MANHOLE
  - ⊠ EXISTING STORM DRAINAGE INLET
  - G — EXISTING GAS LINE
  - W — EXISTING WATER LINE
  - S — EXISTING STORM LINE
  - - - - - EXISTING SANITARY SEWER
  - - - - - NEW SANITARY SEWER
  - - - - - EXISTING OVERHEAD POWER LINES
  - - - - - EXISTING CONTOUR
  - X EXISTING FENCE
  - - - - - RIGHT-OF-WAY LINE
  - - - - - PROPERTY LINE
  - - - - - ROAD CENTERLINE
  - - - - - EDGE OF WETLANDS
  - - - - - SILT FENCE
  - - - - - LIMIT OF DISTURBED AREA
  - ⊕ DECIDUOUS TREE
  - ⊕ EVERGREEN TREE



NJ013-0717

SYMBOL	DESCRIPTION	DATE	APPROVED	
REVISIONS				
FOSTER WHEELER USA CORPORATION PERRYVILLE CORPORATE PARK, CLINTON, N.J.				
UNITED STATES ARMY GARRISON FORT DIX DIRECTORATE OF PUBLIC WORKS FORT DIX, NEW JERSEY 08640				
DRAWN	JJG	NEW WASTEWATER LIFT STATION AND FORCED MAIN SIEVERS-SANDBERG US ARMY RESERVE CENTER PEDRICKTOWN, NEW JERSEY		
DESIGNED	WRL			
CHECKED	JCM			
FP&P DIV				
ENV DIV	USING AGENCY			
O & M DIV	DOIM	SITE PLAN		
RECOMMENDED:	CHIEF ENGINEERING PLANS & SERVICES		SCALE: 1" = 30'	DRAWING NUMBER
APPROVED:	REGIONAL DIRECTORATE OF PUBLIC WORKS		DATE: OCT. 25, 1996	C-1
			PR. NR: GM-00036-5P	SHEET 10 OF 18

13-05-37389

C:\proj\9905\38905.dwg Oct 15 1996 11:56