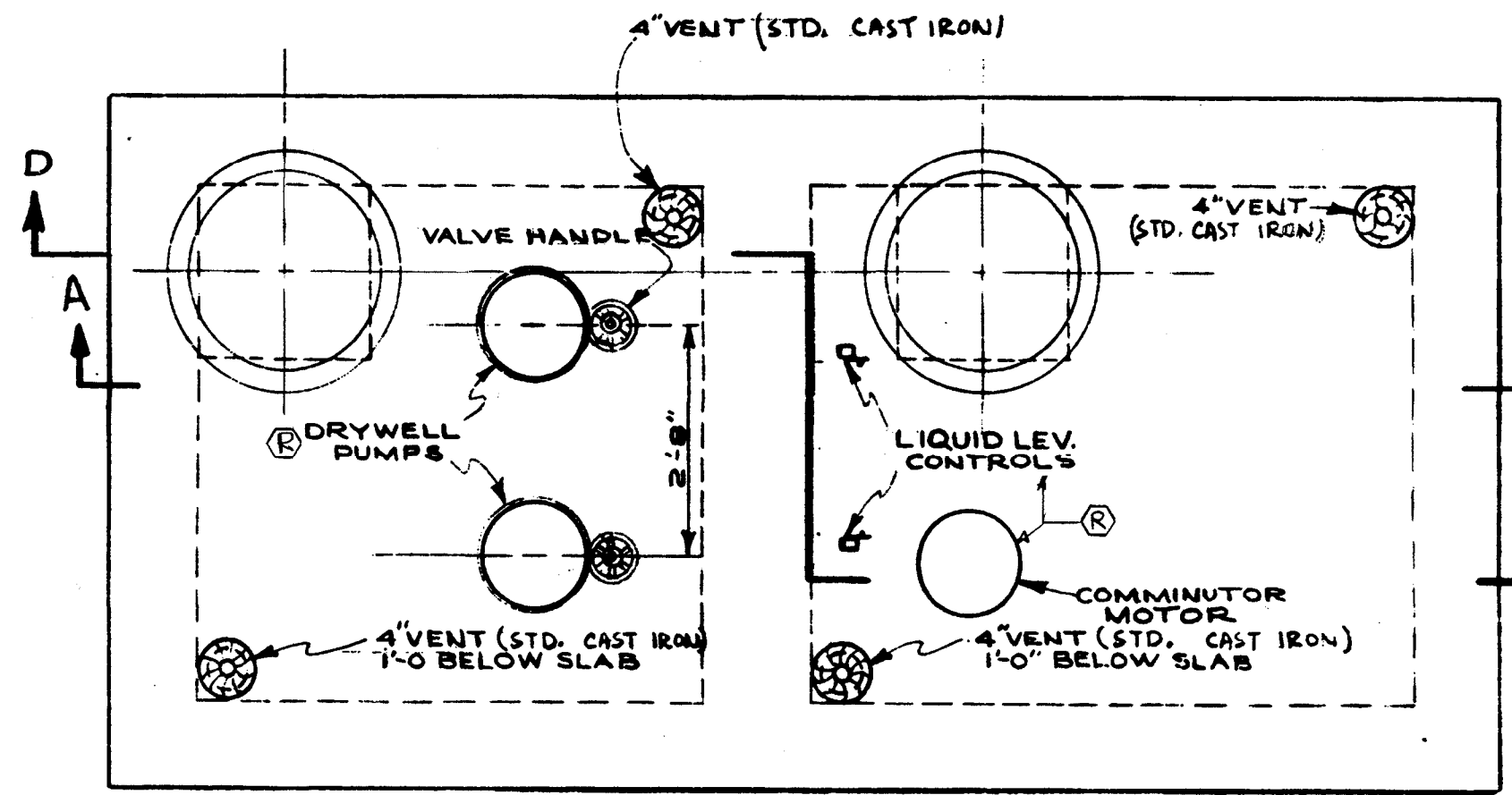
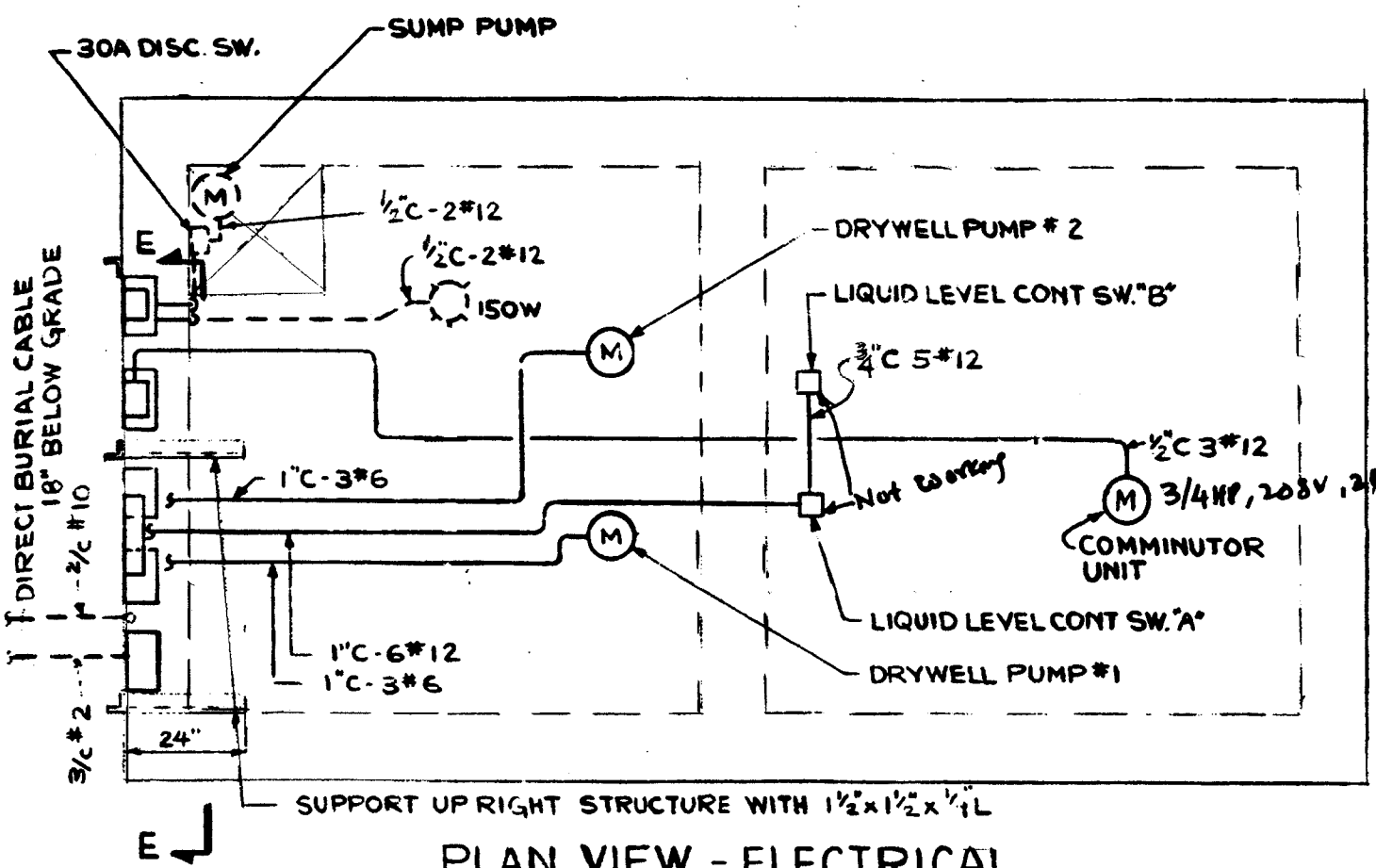


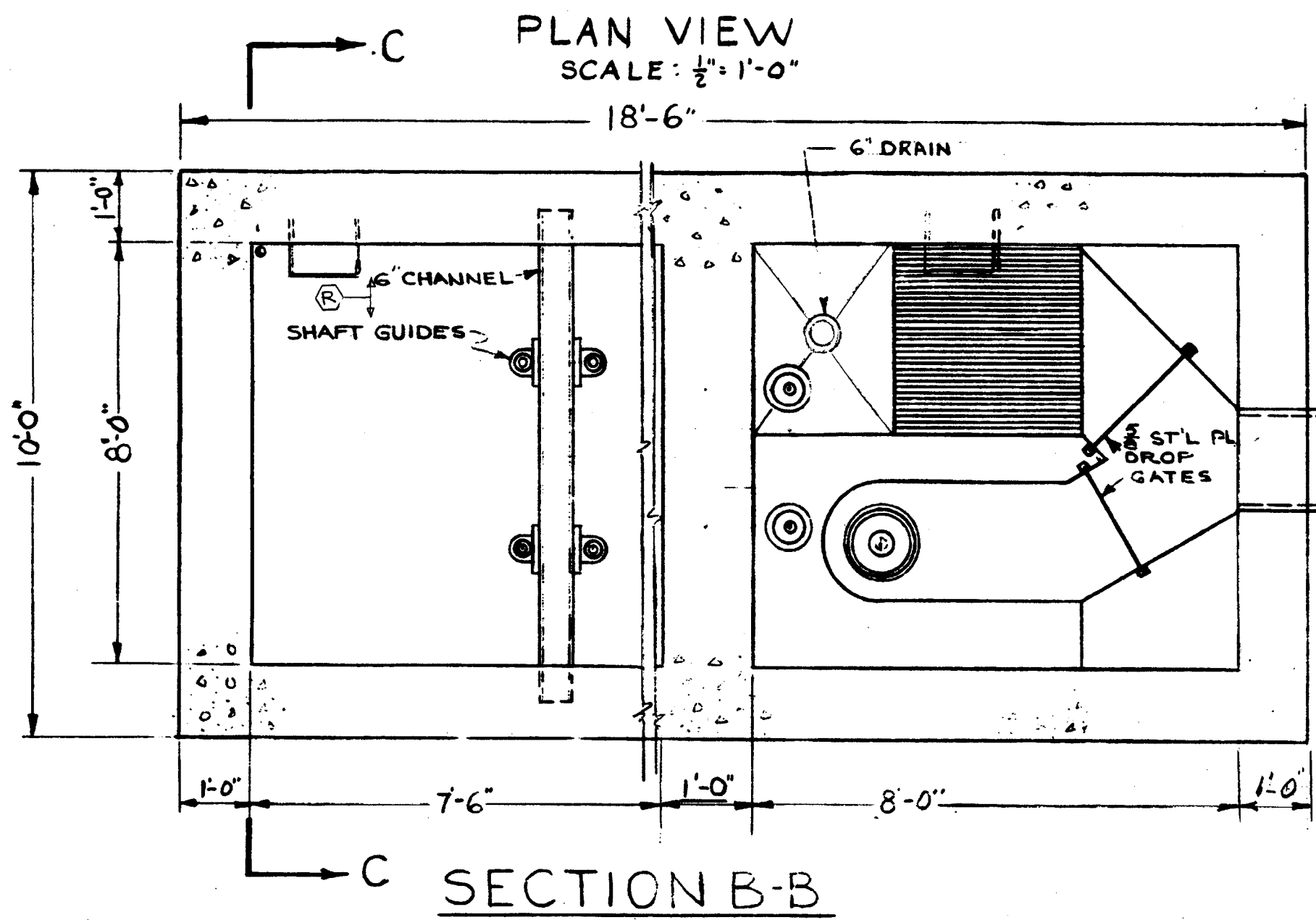
FRAME-TYP. M.H.  
NO SCALE



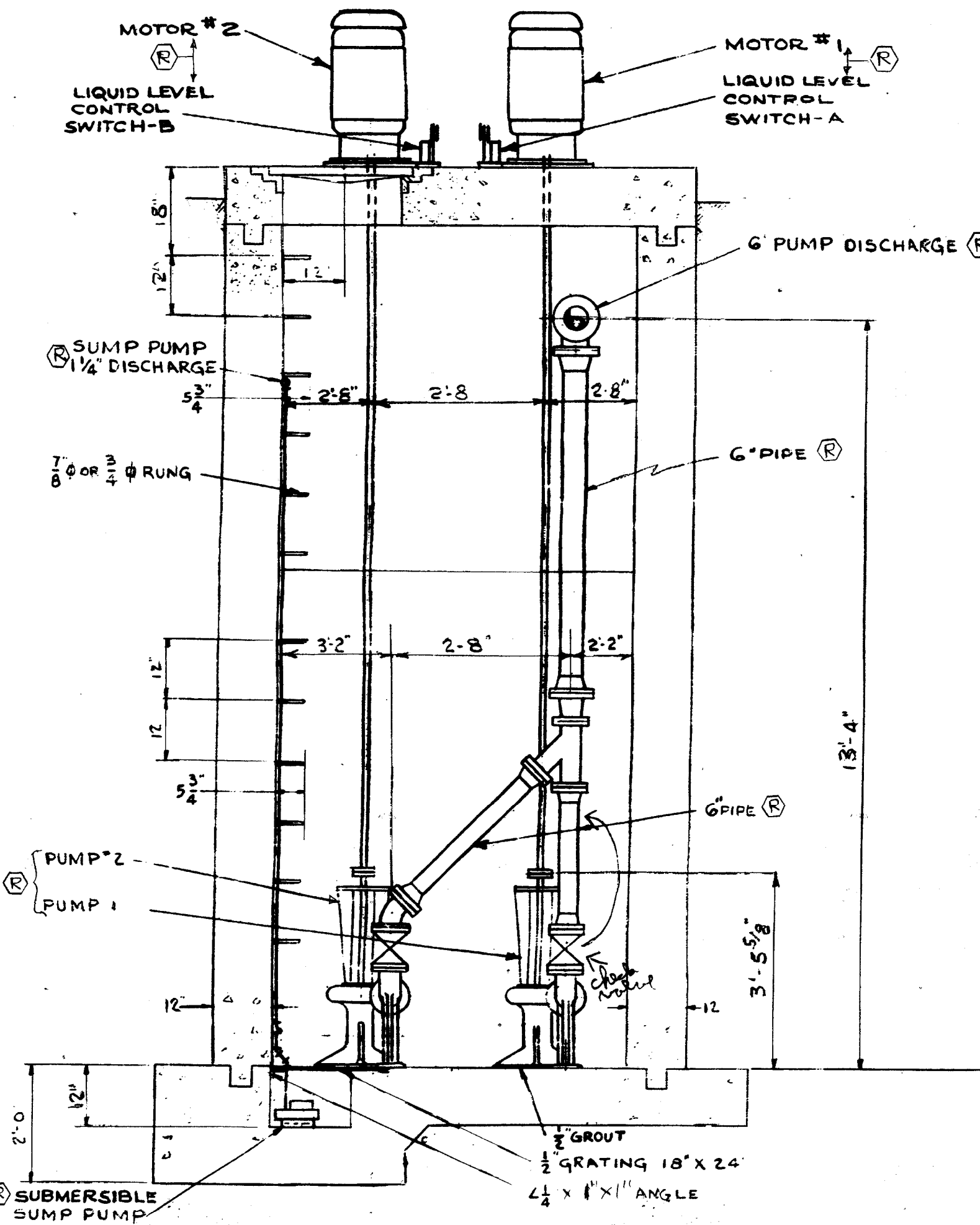
PLAN VIEW  
SCALE: 1/4" = 1'-0"



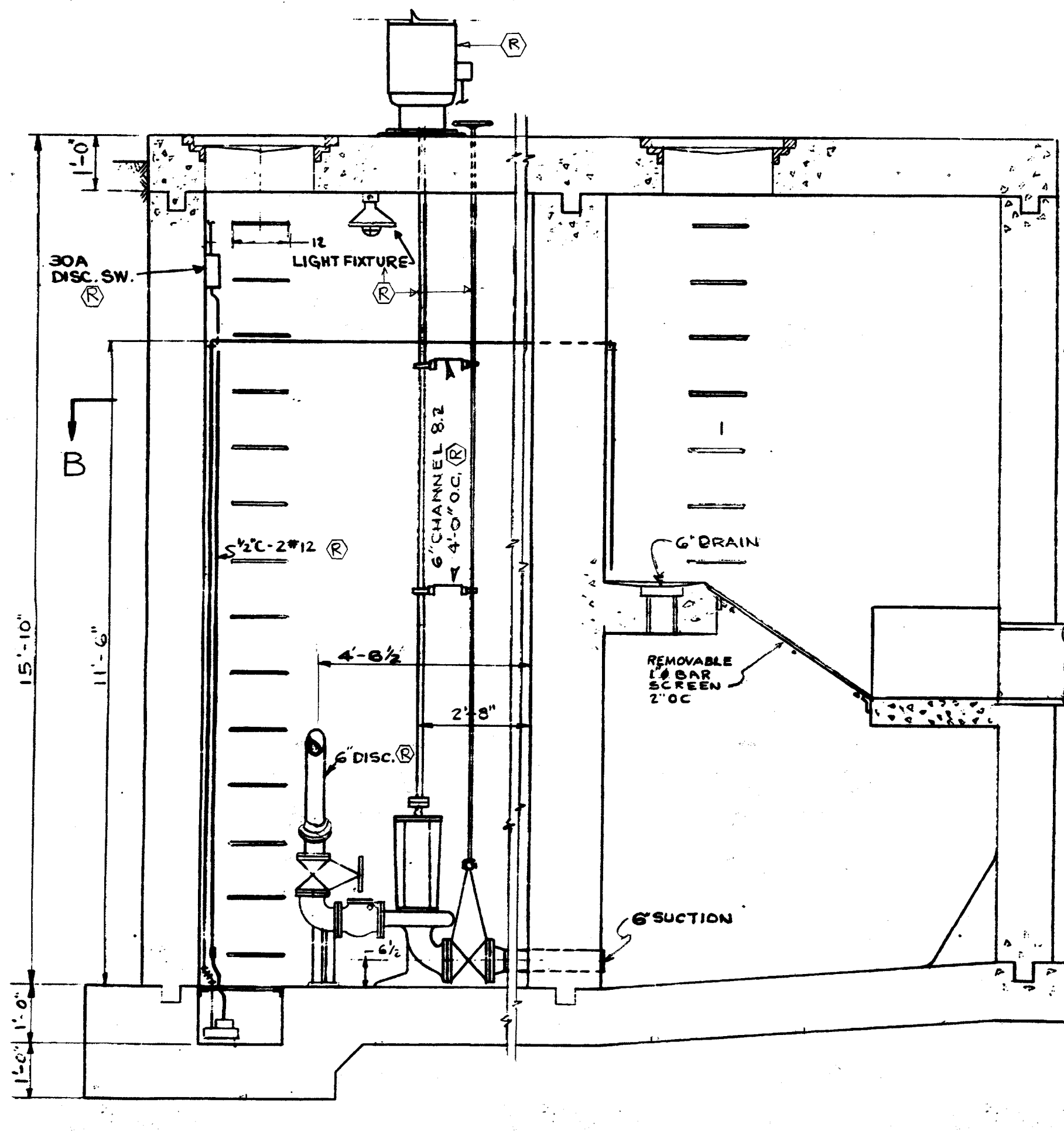
PLAN VIEW - ELECTRICAL  
SCALE: 3/4" = 1'-0"  
REMOVE ALL EXISTING DEVICES



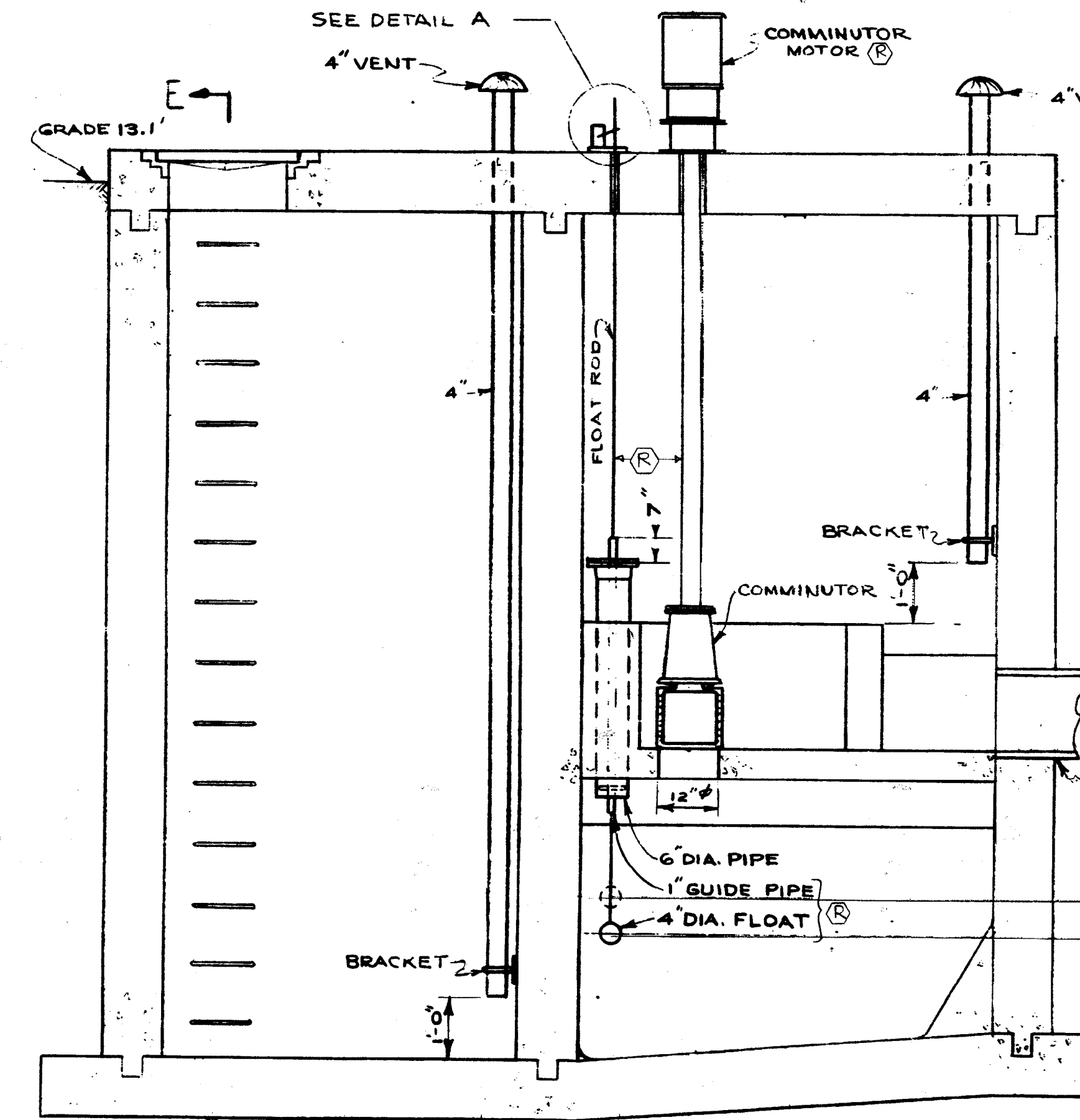
SECTION B-B  
SCALE: 1/4" = 1'-0"



SECTION C-C  
SCALE: 1/4" = 1'-0"



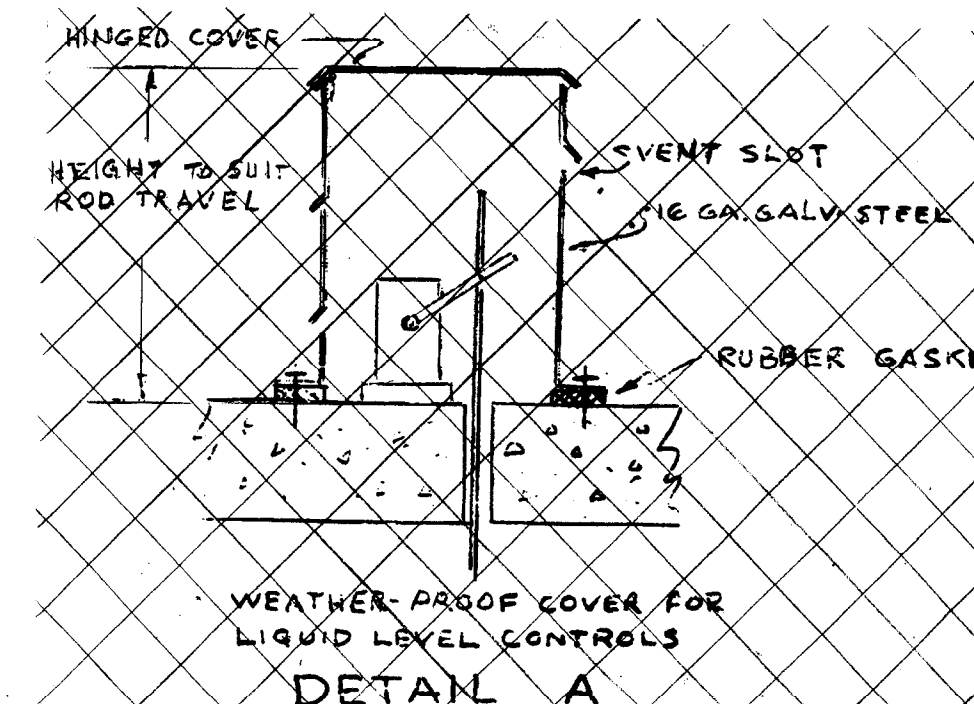
SECTION A-A  
SCALE: 1/4" = 1'-0"



SECTION D-D  
SCALE: 1/4" = 1'-0"

DEMOLITION NOTES:

1. REMOVE ALL PIPING AND ELECTRICAL EQUIPMENT.
2. (S) INDICATES ITEM/SYSTEM/STRUCTURE TO BE ABANDONED/REMOVED PER SPECIFICATIONS.



1 0 1 2  
SCALE IN FEET

NOTES:

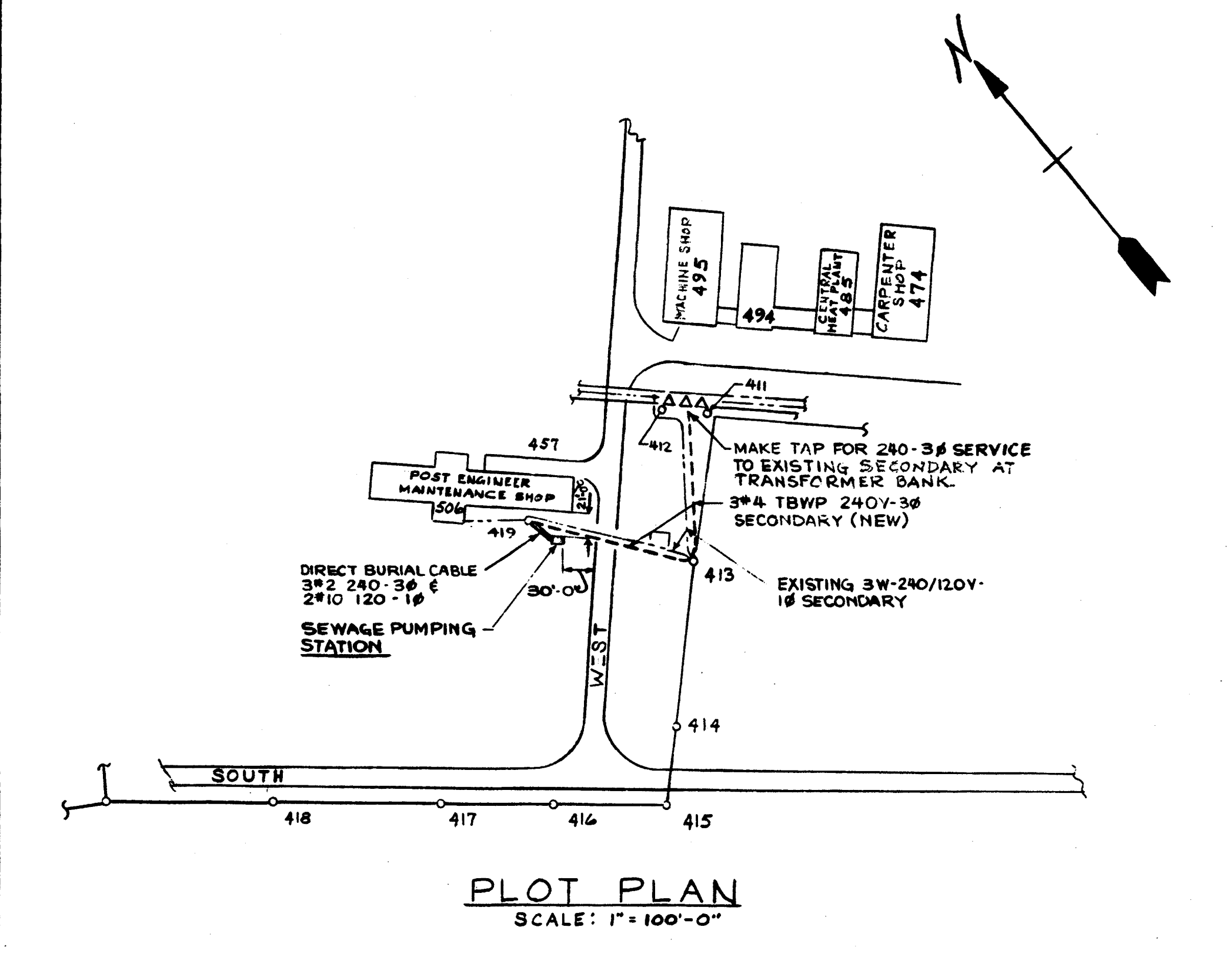
1. ALL ELECTRICAL EQUIPMENT & INSTALLATION INSIDE PIT TO BE INSTALLED IN ACCORDANCE WITH N.E.C. ARTICLE 500 & 510 CLASS I GROUP D.
2. ALL ELECTRICAL EQUIPMENT & INSTALLATION OUTSIDE PIT TO BE WEATHERPROOF.

DESCRIPTION OF EQUIPMENT

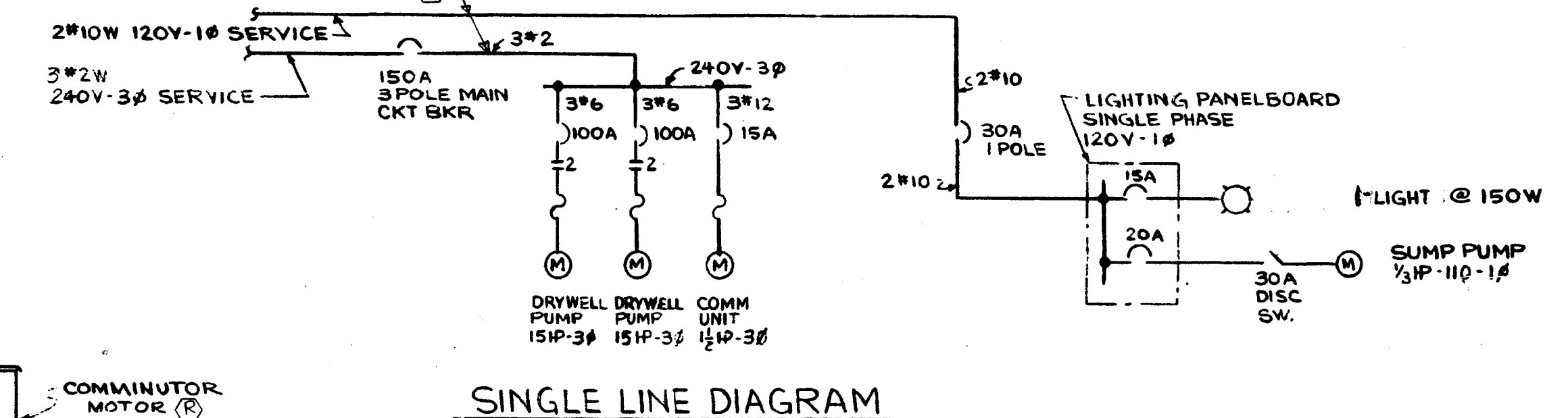
**AUTOMATIC ALTERNATOR** - SHALL CONSIST OF A SUFFICIENT NUMBER OF 240VOLT, 60~ A.C. SWITCHING RELAYS MOUNTED IN ONE ENCLOSURE. EXTERNAL CONNECTIONS ARE MADE DIRECTLY TO TERMINAL SCREWS ON THE SWITCH MECHANISMS.

**MOTOR STARTERS** - ARE COMBINATION CKT BKR & STARTER. EACH STARTER SHALL BE MAGNETIC & OPERATE ON A LINE VOLTAGE OF 240V-3P-60~ A.C. SOURCE. EACH STARTER SHALL SUPPLY ITS OWN SOURCE OF POWER FOR THE CONTROL TO THE ALTERNATOR & LIQUID LEVEL CONTROL SW'S 'A' & 'B'.

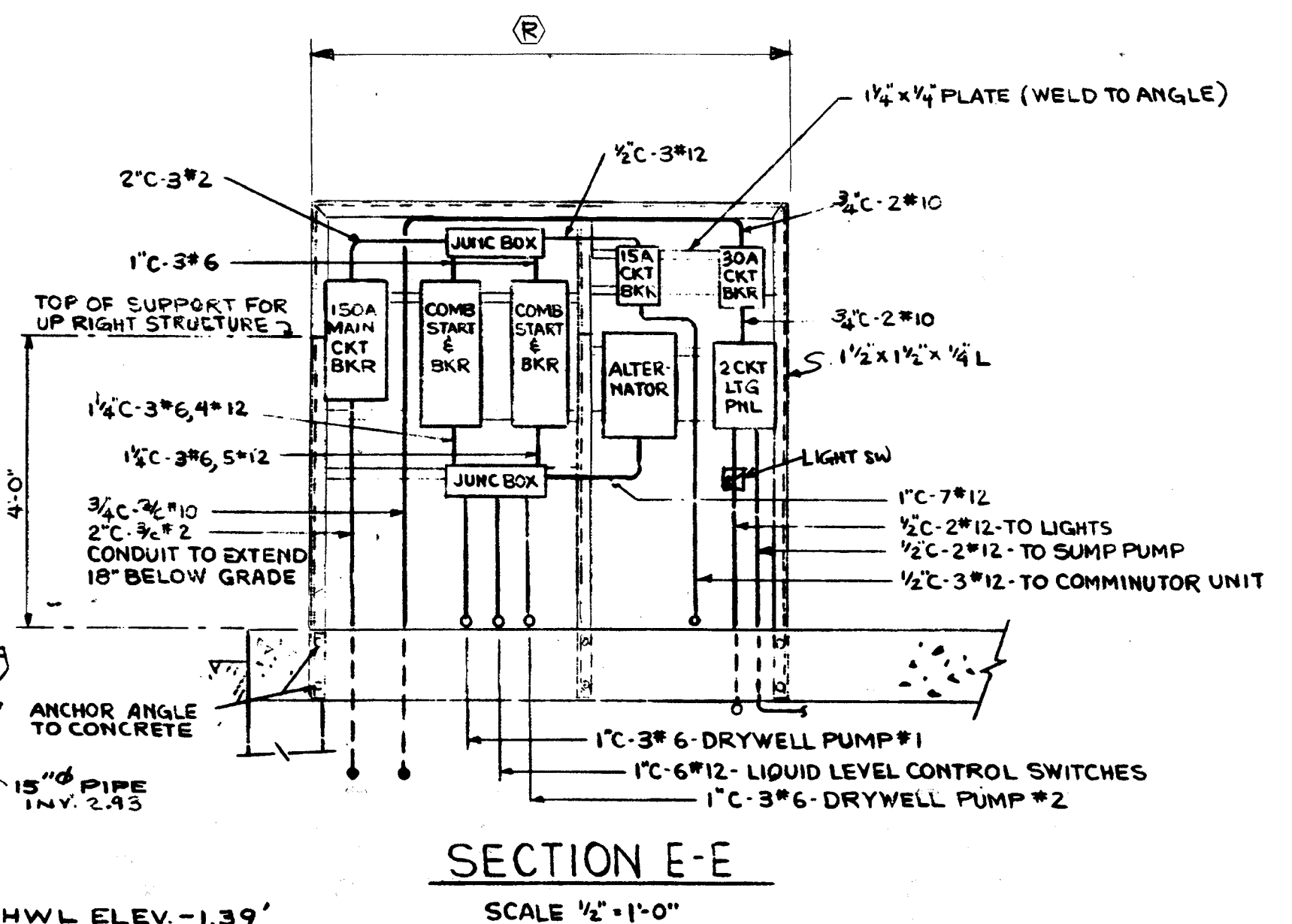
**LIQUID LEVEL CONTROL SWITCHES** - ARE ROD OPERATED & EACH SHALL CONSIST OF TWO DOUBLE POLE, SINGLE THROW SWITCHES. CONTACTS RATED FOR 240V AC-60~ AND ARE CLOSED ON LIQUID RISE.



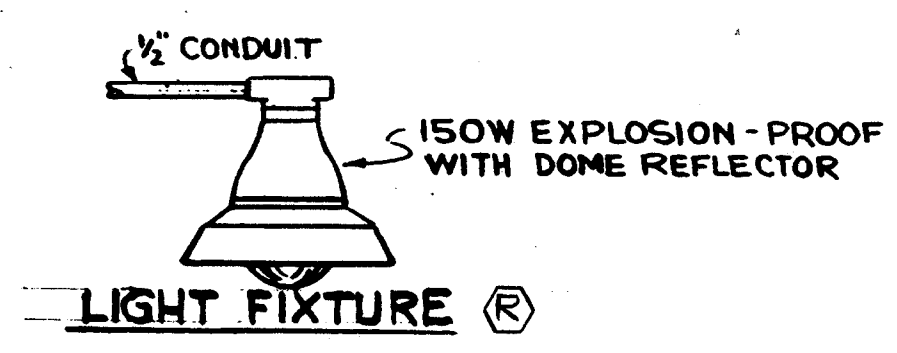
PLOT PLAN  
SCALE: 1" = 100'-0"



SINGLE LINE DIAGRAM



SECTION E-E  
SCALE: 1/2" = 1'-0"



LIGHT FIXTURE (S)

EQUIPMENT SCHEDULE								
TYPE	QTY	HP	RRM	QPH	TOM	DISC. SUCT. SIZE	ELEC. CHARAC.	REMARKS
SUMP PUMP	1	1 1/2	-	18.0	15	1 1/2	220V	SUBMERSIBLE TYPE BUILT IN CHECK VALVE FLOAT
DRYWELL PUMP	2	15	1750	400	69.5	4"	208V-60-3P	VERTICAL TYPE MOTOR TO BE NEMA 2
COMMUNICATOR	1	1 1/2	1750	AFCE (MCD)	-	-	220V-60-3P	"

NOTE: MOTOR HP RATINGS SHOWN ARE MINIMUM REQUIRED CONTRACTOR SHALL SUPPLY MOTORS RECOMMENDED BY EQUIPMENT MANUFACTURERS.

SYMBOL		DESCRIPTION	DATE	APPROVED
SYMBOL		REVISIONS		
		FOSTER WHEELER USA CORPORATION PERRYVILLE CORPORATE PARK, CLINTON, N.J.	UNITED STATES ARMY - FORT DIX DIRECTORATE OF PUBLIC WORKS FORT DIX, NEW JERSEY 08640	
DRAWN	N.A.	NEW WASTEWATER LIFT STATION AND FORCE MAIN		
DESIGNED	N.A.	SEIVERS-SANDBERG U.S. ARMY RESERVE CENTER		
CHECKED	JCM			
FP&P DIV		PEDRICTTOWN, NEW JERSEY		
BAG DIV		DEMOLITION OF PUMP STATION 002		
UTIL. DIV				
USING AGENCY				
RECOMMENDED:	Chief Engineering, plans & SERVICES	SCALE: AS NOTED	DATE: OCT. 25, 1998	DRAWING NUMBER
APPROVED:	Director of Engineering & Housing	PR. NR: GM-00036-5P		PLATE D.8
				SHEET 9 OF 18

13-05-37389

373892