



U.S. General Services Administration



EVSE - Get Plugged In!

A Client Enrichment Series Presentation

February 16, 2023

Introductions

Neil Gilligan

Program Manager, Center for Electric Vehicle Infrastructure (CEVI)

Chris LaRocque

Program Coordinator, Center for Electric Vehicle Infrastructure (CEVI)

Jimmy Rogue

Program Coordinator, Center for Electric Vehicle Infrastructure (CEVI)

Lisa Wheatley

Program Analyst, FAS ZEV Team (GSA Fleet)

Chris Towery

Contracting Officer, Center for Electric Vehicle Infrastructure (CEVI)

Agenda

Fleet Electrification

EV Overview

EVSE BPA

EVSE Construction IDIQ

Ordering Paths

Resources

U.S. Federal Fleet Electrification Initiative

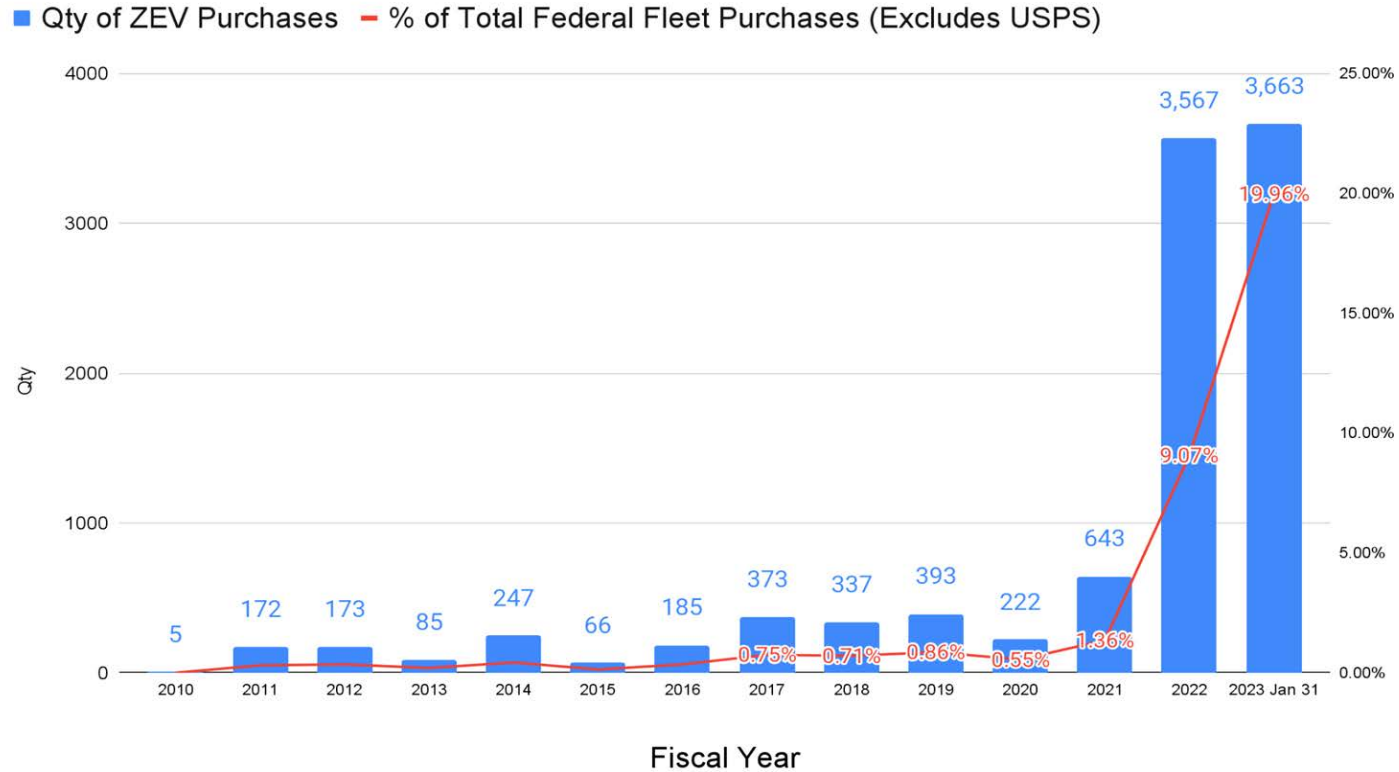
Advancing EV Market

- Fixing America's Surface Transportation (FAST) Act of 2015
- Executive Order 14037 (50% of auto sales ZEVs by 2030)
- Infrastructure Bill – \$7.5B for ZEV Charging across U.S. (NEVI Program)
- Domestic battery and vehicle production and station manufacturing

Leading by Example

- EO 14057 – Federal Fleet Zero-Emission Vehicle Acquisition goals (100% of light-duty vehicle acquisitions by 2027 & 100% of all vehicle acquisitions by 2035) and annual intermediate targets
- Providing acquisition pathways to support ZEVs
- Looking to pilot and build out electric vehicle infrastructure at Federal Facilities

Federal Fleet Electric Vehicle Orders



EV Overview

- **Zero Emission Vehicles (ZEV)**

- **Battery Electric Vehicles (BEV)**

- Powered entirely by electricity
- No fuel tank or exhaust pipe
- Teslas, Chevy Bolt, Hyundai Kona

- **Plug-in Hybrid Electric Vehicle (PHEV)**

- Have an electric motor and a fuel based internal combustion engine (ICE)
- Travels about 30 miles on battery - then shifts to gas powered
- Ford Escape PHEV, Wrangler PHEV, Pacifica PHEV

- **Types of Charging Stations**

- Level 1, Level 2, DC Fast

- **Charging Ports**

- Single port, double port.
- Tip: Clarify the scope. Does the customer want 2 ports or 2 stations?

EV Charging Infrastructure by Type

Level-1 Charging 110V/120V



NEMA 15

- 1.3- 2.4 kWh
- J1772 is standard
- 4-6 miles per hour charge time
- \$0-\$3K (charger only)

Level-2 Charging 208V/240V



J1772

- 3-19 kWh
- J1772 is standard (Teslas come with adapter)
- 10-20 miles per hour charge time
- \$500-\$12,000 (charger only)

DC Fast Charger 208V/480V



Tesla, SAE Combo, CHAdeMO

- Max output of 350 kWh
- Most vehicles use CCS (Tesla comes with adapter)
Nissan Leaf uses CHAdeMO
- 50-90 miles in 30 minutes
- \$32,000+ (charger only)

- Finding a charger [plugshare.com](https://www.plugshare.com) or [DOE Alternative Fueling Station Locator](https://www.doe.gov/alternative-fueling-station-locator)
- Sites like [abetterrouteplanner.com](https://www.abetterrouteplanner.com) help drivers plan for charging on trips

EVSE by Recharging Time

MY2021 Electric Vehicle	All Electric Range/Total Range/Mile	Level 1/120V Recharge Time (hrs) Least Expensive	Level 2/240V Recharge Time (hrs) Moderately Expensive	DC FAST (50-150 kW) Recharge Time (hrs) Most Expensive
		<i>4-6 miles of range per hour.</i> Charging cord provided. Plug into existing outlet or station	<i>10-20 miles of range per hour.</i> 2-10 hours for full charge. Stations can collect data.	<i>50-90 miles of range per 30 mins.</i> Full charge in 30 minutes-1 hour.
Nissan Leaf (base)	149	30	7.5	1.8
Chevy Bolt	259	64	9	1.4
Chrysler Pacifica PHEV	32/520	14	2	N/A
F150 Lightning	230-320	72+	10-14	41-122 minutes
Mustang Mach-E	211-300	95+	14	1 hour
Hyundai Kona	258	50+	9.5	1 hour
Ford Escape PHEV	37/530	10	3.5	N/A
Jeep Wrangler PHEV	22/370	12	2.4	N/A

U.S. Federal Fleet Electrification Initiative

- **EVSE Installations – have a plan!**
 - Plan for long term to scale quickly & keep overall cost down
 - Allow for payment collection if needed for POV charging
 - Network capability if station(s) will not be in secure location
 - Charging parameters are limited by vehicle

Per GSA P-100, federal fleet EVSE infrastructure must minimally include

Level 2 chargers (dual port)

Lots with less than 5 GOVs = 2 ports

Lots with 5-15 GOVs = 4 ports

Lots with greater than 15 GOVs = 30% ratio of cars to ports.

At least one ABAAS compliant space

*Level 2 will be sufficient for most agencies except possibly for LE missions.

EVSE Site Assessments

- PBS Special Projects Division (SPD) awarded a large site assessment to Parsons Government Services.
 - Award Amount: \$2,030,152.73
 - Comprehensive analysis of existing electric distribution system's capacity to support conversion of all GOVs stationed at a facility.
 - Includes 235 buildings
- SOW: AE to complete a comprehensive analysis of the existing electrical distribution system's capacity to fully support conversion of all GOVs station at the facility.
- Will help us to identify where upgrades are needed.

EVSE BPA Award Highlights

Includes hardware, software,
O&M, make-ready/site
assessment services & more!

**Over 30 EVSE
brands and 1,165
line items**

**16 offerors were
awarded, including 9
small businesses**

**PBS Contractors can buy
from FAS BPA holders
creating a one stop shop
for stations & installation**

**Onboarding
Opportunities**

**Contract
Length**

60 Months

View all offerings, pricing and BPA-holder
information at gsa.gov/evse

EVSE BPA Benefits

Benefit of BPAs:

- Streamlined contracting vehicle
- Pre-Competed
- Pricing discounts
- Technical evaluation of products
- Includes additional requirements on top of MAS such as IT Security

Who can access:

- Federal agencies
- Contractors with PBS' Governmentwide Design/Build & Construction EVSE IDIQs
- Cities & States for emergency or disaster preparation, public health emergencies, or through the cooperative purchasing program

What's on the EVSE BPA?

Services

CLIN 0006

Site assessment
Validation
Permitting
Basic installation
Utility coordination
Wiring and more

Hardware

CLINs 0001-0005,
0010 & 0011

Level-1 Charger
Level-2 Charger
DC Fast Charger
Solar Charging
Portable Charging
Accessories

Management Software & Network Plans

CLINs 0007 & 0008

Power management
Network plans
Real-time analytics
Data plans
Cloud software

Warranty Plans

CLIN 0009

Parts-only
Parts & labor
Onsite repair
Replacement
1-5 year coverage

Charging as a Service

CLINs 0002 & 0003

Activation
Ongoing operator & driver support
Charging data & analytics
Power management, & basic installation

EVSE BPA Product Brands

Levels 1 & 2



Level 3 (DC Fast)



Solar & Portable



Software & Network Plans



[GSA.gov/ElectrifyTheFleet](https://www.gsa.gov/ElectrifyTheFleet)

→ Subpage: [GSA.gov/EVSE](https://www.gsa.gov/EVSE)

◆ Under **EVSE BPA information** subsection

- **2022 EVSE BPA fact sheet**
 - Overview of EVSE BPA products, services, and brands
- **EVSE BPA offerings spreadsheet**
 - Full of available products and services, including pricing and specifications, as well as vendor contact information
- **EVSE BPA ordering guide**
 - Step by step guide for placing orders through the BPAs

Fleet Electrification: GSA's Complete Infrastructure Solution


Infrastructure is a critical first step to successfully electrify the Federal Fleet

Product & Service BPAs

- Hardware offerings for Level 1, 2 & DC Fast
- Ancillary product services
- Federal IT security compliance
- Product onboarding & offboarding
- Small Business preferences

Design/Build Install IDIQs

- Construction, design & build
- Feasibility studies & site assessment
- Repair and alterations
- Electrical upgrades
- Testing, commissioning, & utility coordination
- Self-service, assisted acquisition, contract support or delegation of procurement authority



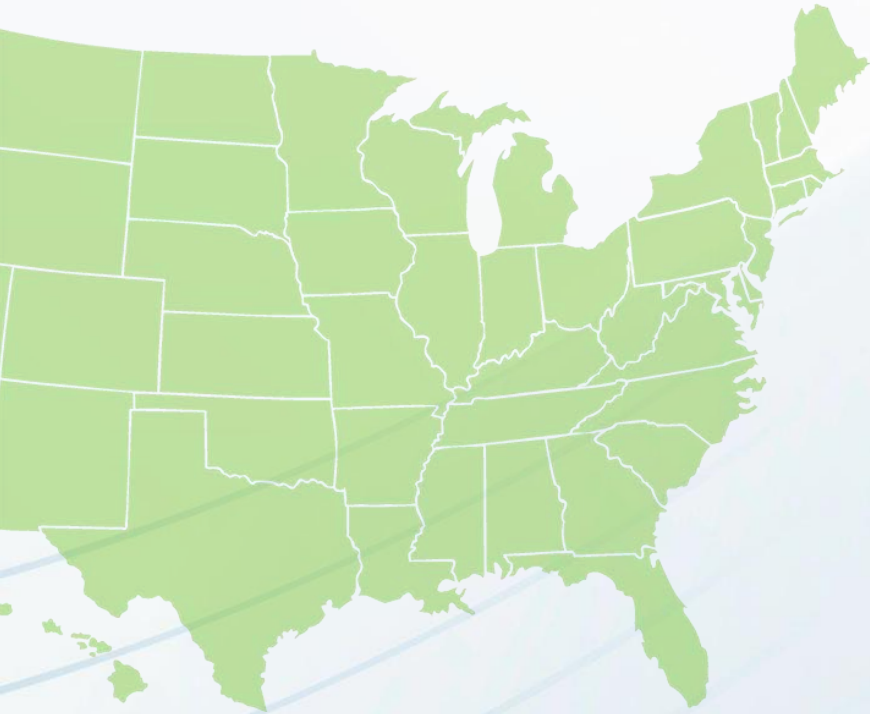
FAR 51 Deviation allows PBS contractors to buy from EVSE BPA

gsa.gov/ElectrifyTheFleet

Governmentwide Design/Build Construction IDIQ Overview

***Electric Vehicle Supply Equipment
(EVSE) Installation and Related
Infrastructure***

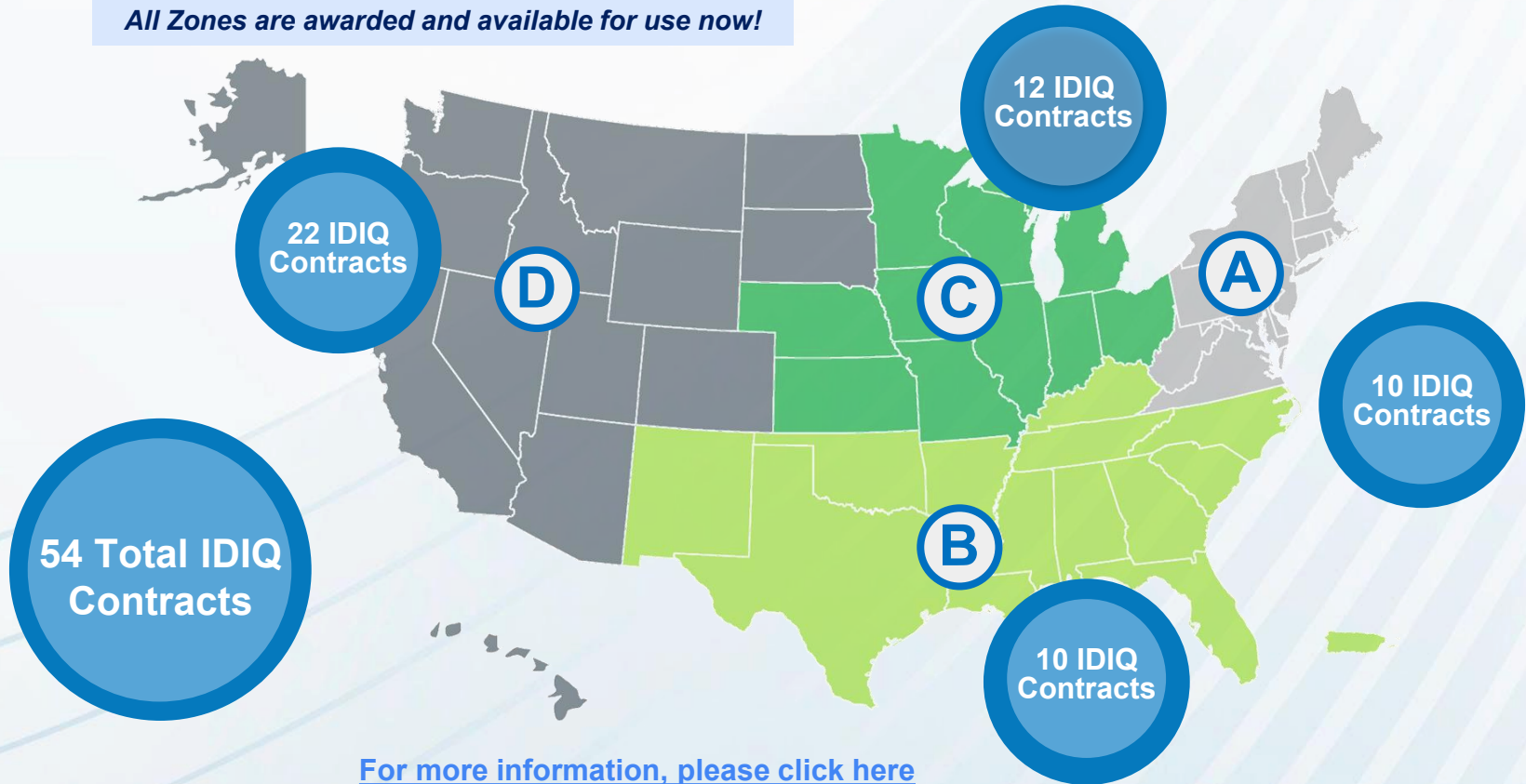
Governmentwide IDIQ Overview



- **Covers any Federal agency location**
 - Including GSA controlled space and non-GSA controlled space
- **Four Geographic Zones**
- **\$500 million total ceiling per Geographic Zone**
 - Across all IDIQ contracts within each Geographic Zone
- **1 year base with four 1- year option periods**
 - POP is active
- **Total Small Business Set Aside**
 - Most IDIQ contractors are socioeconomic small businesses

Geographic Zones

All Zones are awarded and available for use now!



Geographic Zone Breakdowns

Zone A

10 IDIQ
Contracts

3 - 8(a)

8 - SDB

3 - HUBZone

4 - VOSB

2 - SDVOSB

1 - WOSB

1 - EDWOSB

Zone B

10 IDIQ
Contracts

3 - 8(a)

9 - SDB

1 - HUBZone

1 - VOSB

1 - SDVOSB

3 - WOSB

2 - EDWOSB

Zone C

12 IDIQ
Contracts

2 - 8(a)

10 - SDB

3 - HUBZone

2 - VOSB

2 - SDVOSB

2 - WOSB

Zone D

22 IDIQ
Contracts

6 - 8(a)

18 - SDB

6 - HUBZone

6 - WOSB

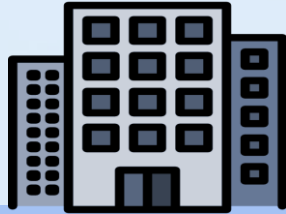
2 - EDWOSB

1 - VOSB

[For IDIQ contractor point of contacts, please click this link](#)

Ordering Contracting Officers (OCOs)

GSA Controlled Space



Non-GSA Controlled Space



Task orders may be placed by:

- GSA PBS Contracting Officers (COs) only
- GSA PBS Contracting Officers
- Other Federal Agency COs with delegated procurement authority from the IDIQ CO
- Leased Spaced contact your LCO

****Delegation of Procurement Authority (DPA) not needed for GSA PBS Contracting Officers***

Governmentwide Construction IDIQ

WITHIN IDIQ SCOPE

General Construction Services

EVSE Installation

Testing and Commissioning

Utility Coordination

Electrical Infrastructure Upgrades
(e.g., switchgear, transformers)

Feasibility Study and/or Site Assessment

Other Site Work
(e.g. trenching, bollards)

Design/Build Services

OUT OF IDIQ SCOPE

Inherently Governmental Functions

Stand-alone architect-engineer design services

Personal Services Contracts

Ordering Path Options



GSA/PBS Awards & Manages



GSA/PBS Provides Contract Support



Self-Service Design & Construction



Self-Service for EVSE Products & Services

For buildings in or not in GSA's Building Portfolio:

Submit requirements & funding through eRETA

For buildings not in **GSA's Building Portfolio:**

Agency submits requirements & funding through eRETA

Agency requests GSA Delegation of Procurement authority from GSA

Agency views offerings & orders from BPA Holder

gsa.gov/ElectrifyTheFleet

Resources

For project support or questions, please contact pbs-evse-solutions@gsa.gov



For IDIQ contract questions, please contact the IDIQ Contracting Officer at pbs-ev-idiq@gsa.gov



For questions on the EVSE BPA, please contact GSAFleetAFVTeam@gsa.gov

Governmentwide Design/Build and Construction IDIQ Contracts for EVSE Installation and Related Infrastructure

- Ordering Guide
- IDIQ contractor points of contact
- Additional information and resources



GSA's "One-Stop Shop" for Fleet Electrification

Comprehensive information about GSA's EVSE products and services



Questions?

www.gsa.gov/electrifythefleet




Broker Services - Today and in the Future

March 8th, 2023
1 p.m. - 2 p.m. EST
[Register Now](#)

Understand Your Workspace Usage With Daily Occupancy Data

March 16th, 2023
2 p.m. - 3 p.m. EST
[Register Now](#)

Catch CES sessions on  **YouTube**
[Bookmark and binge watch your favorites!](#)
Visit www.gsa.gov/ces
Email clientenrichmentseries@gsa.gov

***GSA's COVID-19 Resources for
Customers***

See our [Safer Federal Workplace](#) site 26

