



WELCOME

Proposed Modernization Project at the
Land Port of Entry (LPOE)
Coburn Gore, Maine

ENVIRONMENTAL ASSESSMENT PUBLIC SCOPING MEETING

Coburn Gore Land Port of Entry

Thursday October 26, 2023

5:00 pm to 7:00 pm





WE WELCOME YOUR COMMENTS!

GSA welcomes public input on the resources and issues that are important to you.

Public scoping comments must be submitted to GSA by November 27, 2023.

- **IN-PERSON.** Fill out a comment form and submit at this scoping meeting.

COMMENT SHEET
Proposed Modernization Project at the
Coburn Gore Land Port of Entry
Public Scoping Meeting
Coburn Gore, ME
Thursday, October 26, 2023

(PLEASE PRINT)
NAME AND AFFILIATION (OPTIONAL): _____
ADDRESS: _____
EMAIL: _____ ZIP CODE: _____

Public participation is an essential component of the National Environmental Policy Act (NEPA) process, and GSA welcomes comments on the Proposed Modernization Project at the Coburn Gore Land Port of Entry.

Please fill out the following form to ensure that the analysis, and ultimately the decision, considers the affected communities' opinions.

If you would like to be added to the mailing list and receive information about the project, please provide your email or mailing address above.

1. Provide us with any environmental or design information or concerns, which you feel should be addressed in the Environmental Assessment for this project.

2. Use this space to provide any additional comments you might have:

Please leave this comment sheet at the designated "drop box" or mail your comments by November 27, 2023 to the address below:

General Services Administration
Attention: Li Wang, Project Manager
Thomas P. O'Neill, Jr. Federal Building
10 Causeway Street, 11th Floor
Boston, MA 02222

You may also email your comment to coburngore.lpo@gsa.gov with subject line "Coburn Gore EA"

- **BY E-MAIL.** Send comments to:
coburngore.lpo@gsa.gov
(Please include "Coburn Gore EA" in subject line.)

- **BY MAIL.** Send comments to:

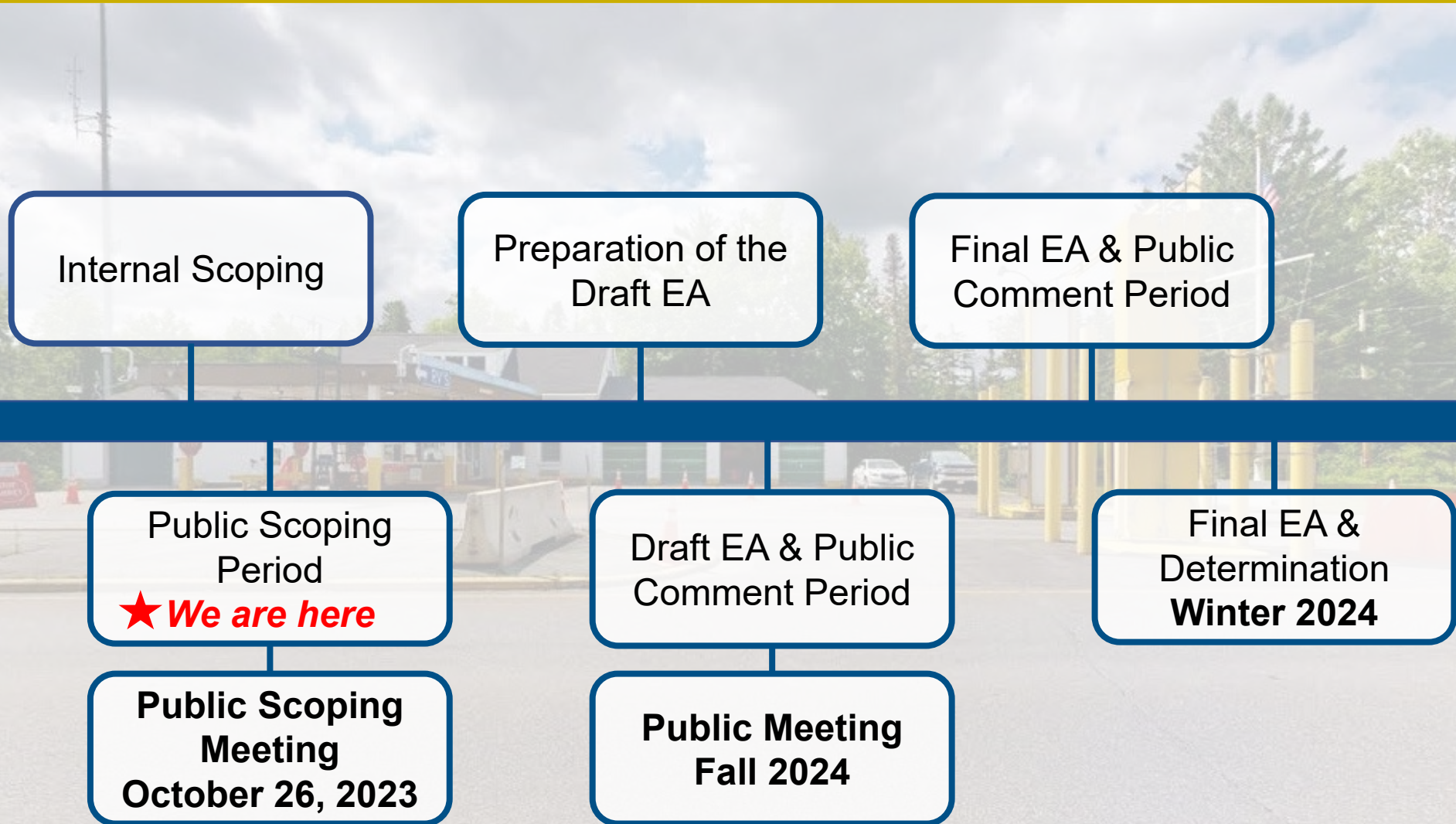
General Services Administration
Attention: Li Wang, Project Manager
Thomas P. O'Neill, Jr. Federal Building
10 Causeway Street, 11th Floor
Boston, MA 02222

- **BY QR CODE.** Scan this code and submit comments online.





NEPA TIMELINE





NEPA PROCESS

Internal Scoping

- GSA identified a need to update the Coburn Gore LPOE with current land port design standards and operational requirements of CBP while addressing existing deficiencies identified with ongoing LPOE operations.
- GSA conducted a Feasibility Study [November 2018] to explore viable alternatives to accommodate the Coburn Gore LPOE operations.

Public Scoping



- GSA informs local, state, and federal agencies of the proposed project through a stakeholder scoping letter.
- The intent of the Public Scoping Meeting is to describe the project, solicit comments, and listen to community concerns and interests before preparation of the Environmental Assessment (EA).
- The public may submit comments on issues that should be considered in the EA.
- Public Scoping Period ends November 27, 2023.

Preparing the Draft EA

- A Draft EA is developed to analyze potential impacts to the natural and human environment.
- Public comments are considered during the preparation of the Draft EA.
- Required consultations are initiated with federal and state agencies to comply with laws and regulations (e.g., Endangered Species Act, National Historic Preservation Act).

Drafting the EA and Public Comments

- GSA notifies the public that the Draft EA is available for public review. (Fall 2024)
- 30-day Public Comment Period is held, which will include a public meeting.
- Written comments on the contents of the Draft EA are accepted via U.S. mail, e-mail, or in-person at the public meeting.

Final EA and Determination Public Review

- Complete required consultations with agencies.
- Review, consider, and address, as appropriate, the public comments received.
- Revise and finalize the EA.
- Determine if the project can proceed under a Finding of No Significant Impacts.
- 30-day waiting period.



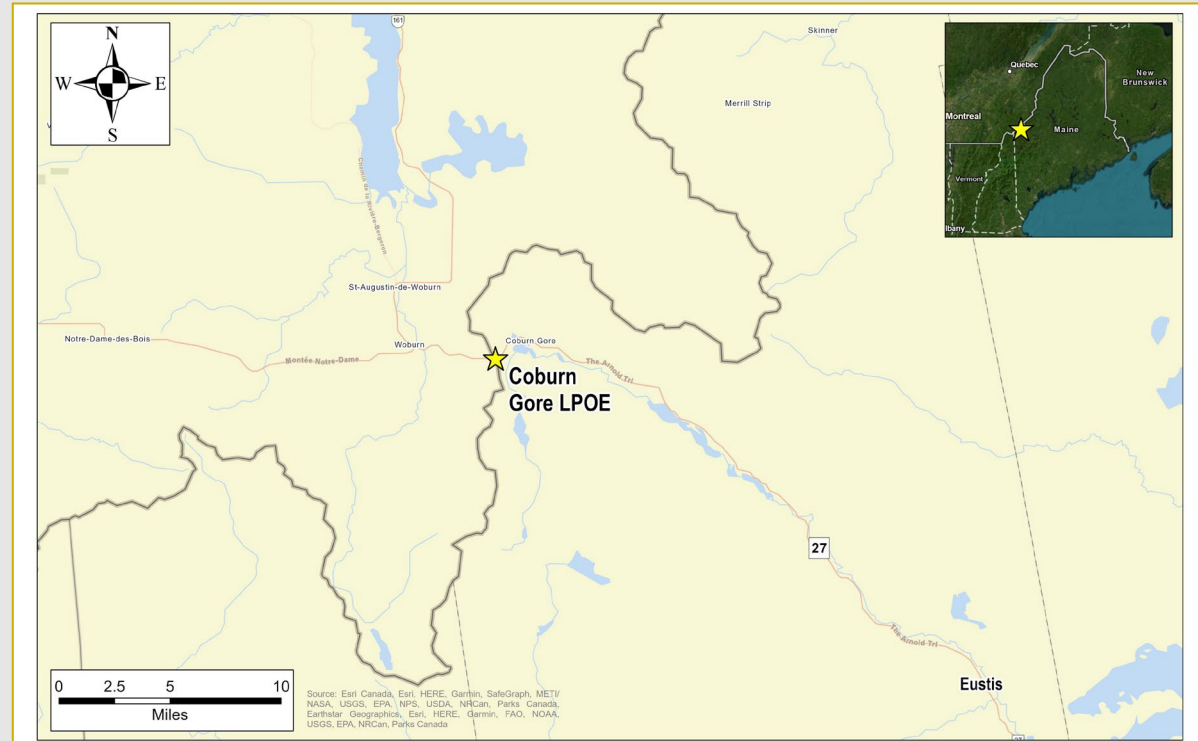
National Historic Preservation Act: Section 106

Section 106 of the National Historic Preservation Act of 1966 (NHPA) requires GSA to consider the effects of federal undertakings on historic properties. If a federal or federally-assisted project has the potential to affect historic properties, a Section 106 review must take place.

Step 1: Initiate Section 106	Step 2: Establish the Area of Potential Effect (APE)	Step 3: Identify Historic Resources	Step 4: Evaluate Effects on Historic Resources	Step 5: Resolve Adverse Effects (where necessary)
GSA identifies potential stakeholders and creates a plan for public involvement.	The geographic area that the project may impact is established.	Historic resources that are either listed in or are eligible for listing in the National Register for Historic Places are identified through survey, research, and public input.	The potential effects on identified historic resources are evaluated. If there are no potential effects, or no potential adverse effects, the process may end here.	If there are potential adverse effects, GSA will explore measures to avoid, minimize, or mitigate those effects. The resolution will result in a Memorandum of Agreement (MOA) or Programmatic Agreement (PA) recording the agreed upon measures to resolve the adverse effects.

PROJECT BACKGROUND

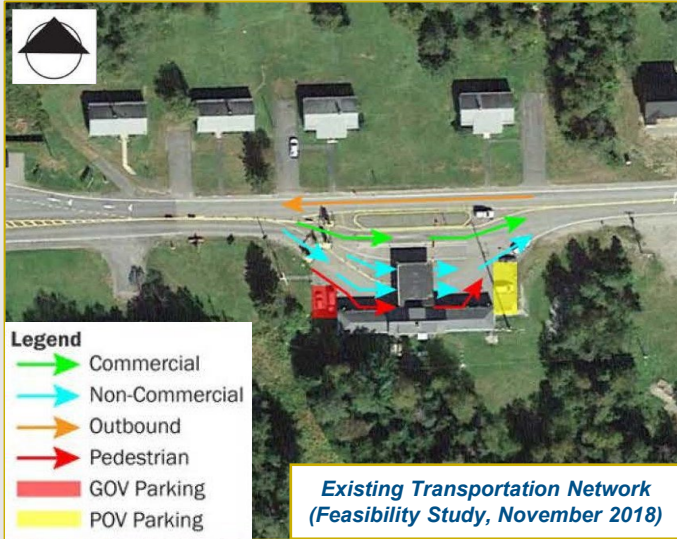
The Coburn Gore LPOE is located in Coburn Gore, ME, about 20 miles northwest of the Town of Eustis, ME and across the border from Woburn, Quebec. The Coburn Gore LPOE is bisected by State Route 27 (also known as Highway 27 and The Arnold Trail) with buildings and facilities to the north and south of State Route 27. The port accommodates commercial and non-commercial vehicles and focuses on the inspection and control of vehicles, goods, and people. The LPOE has been operating since 1932, with existing facilities constructed in the 1930s.



The existing main building and two single-family CBP residences were built in 1932 and are listed on the National Register of Historic Places (NRHP). Two additional single-family residences were built in 1967. Due to the lack of capacity for inspections of different traffic types (commercial, non-commercial, and pedestrian), outdated facilities and technologies, and lack of separation between the LPOE facilities and CBP housing, the LPOE no longer functions adequately and poses safety and security risks for CBP officers and the traveling public. The Environmental Analysis will analyze the potential environmental impacts of the project.



PURPOSE AND NEED



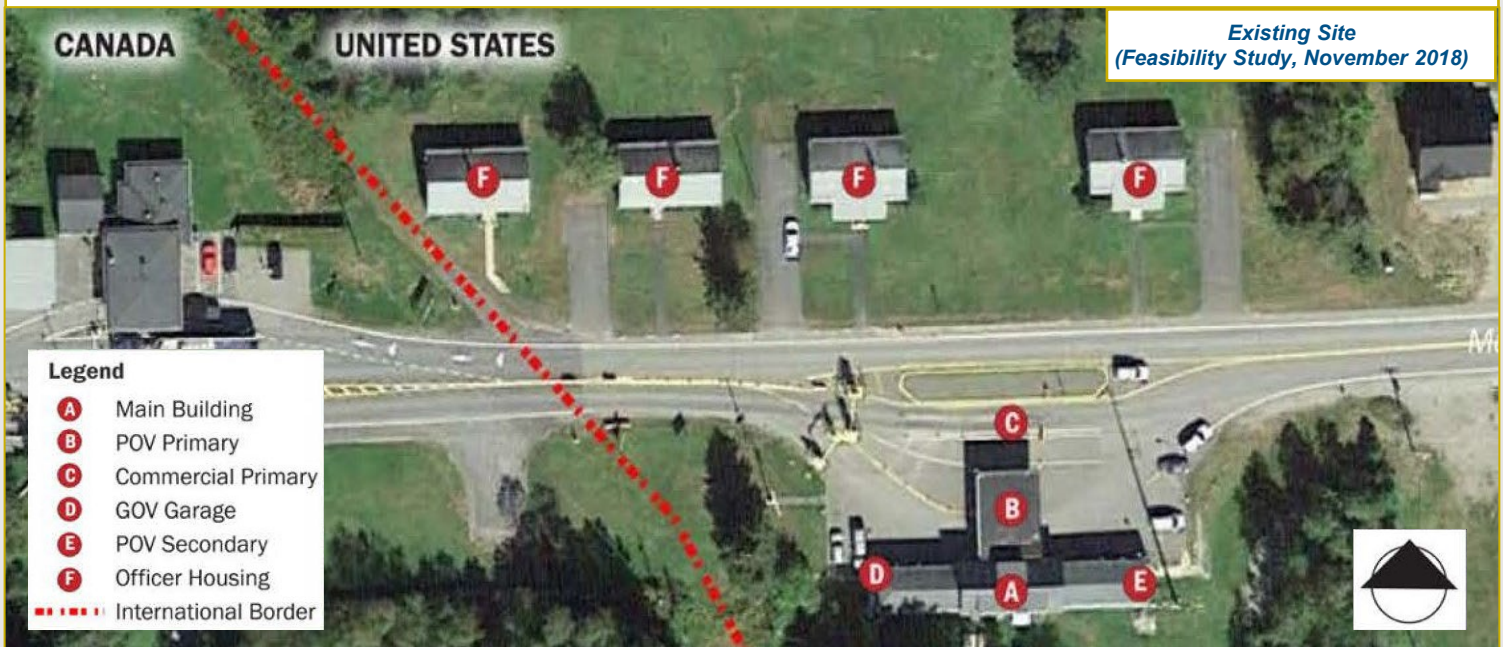
Purpose.

The purpose of the project is for GSA to support U.S. Customs and Border Protection's (CBP) missions by bringing the Coburn Gore LPOE operations in line with current land port design standards and operational requirements of CBP while addressing existing deficiencies identified with the ongoing port operations.

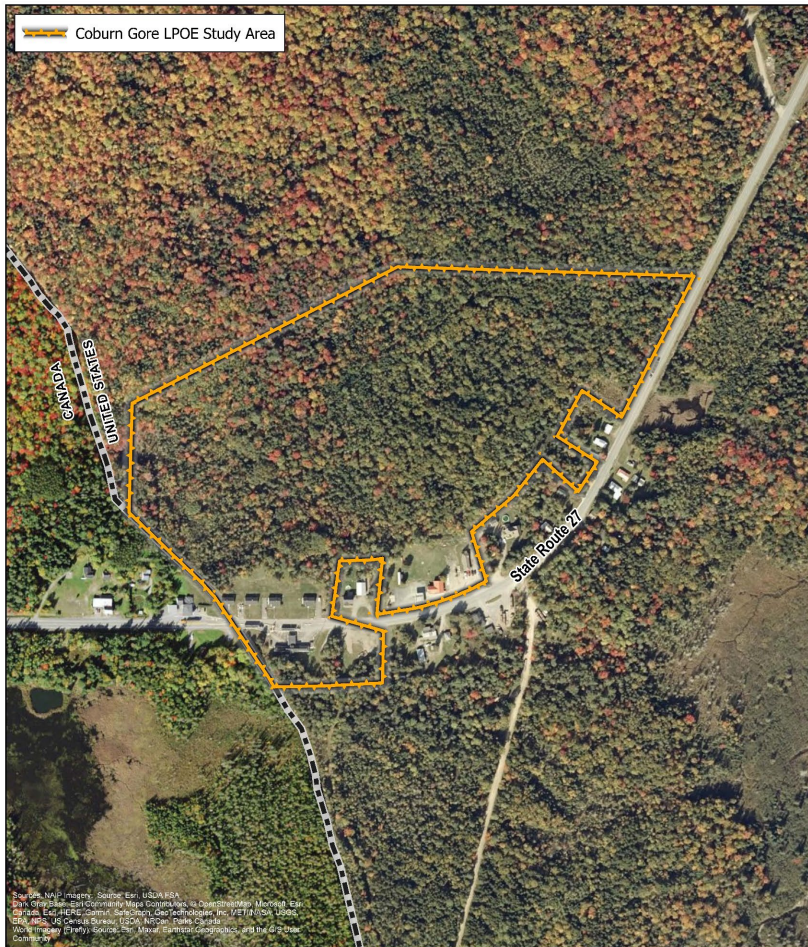
*GOV = government owned vehicle
*POV = privately owned vehicle

Need. The Proposed Action is needed to:

- ❖ Increase processing efficiency and capacity
- ❖ Add commercial processing, non-intrusive inspection, secondary inspection, traffic lanes, parking, and supporting facilities
- ❖ Provide CBP appropriate housing
- ❖ Introduce new safety and security technologies
- ❖ Incorporate sustainability features



PROPOSED ALTERNATIVES



The Environmental Assessment will consider three (3) **“action” alternatives** and a **“no action” alternative**.

The action alternatives may include:

- Construction of new LPOE facilities: Main Port Building, Commercial Processing, a separate Non-Intrusive Inspection, Secondary Inspection, GOV garage, traffic lanes, parking, and supporting facilities.
- Acquisition of additional land.
- Keeping the existing historical main port building in place and relocating the four existing CBP residences.
- Construction of new CBP housing.
- Creating a cul-de-sac at the end of State Route 27.
- Grading for new LPOE facilities.
- Building a retaining wall for new LPOE facilities.
- Construction of on-site stormwater measures.

Under the no action alternative, the current LPOE facilities would continue to operate under existing conditions.



NEPA STUDY AREA
COBURN GORE LAND PORT OF ENTRY (LPOE)
0 500 1,000
Feet
Coburn Gore, ME