

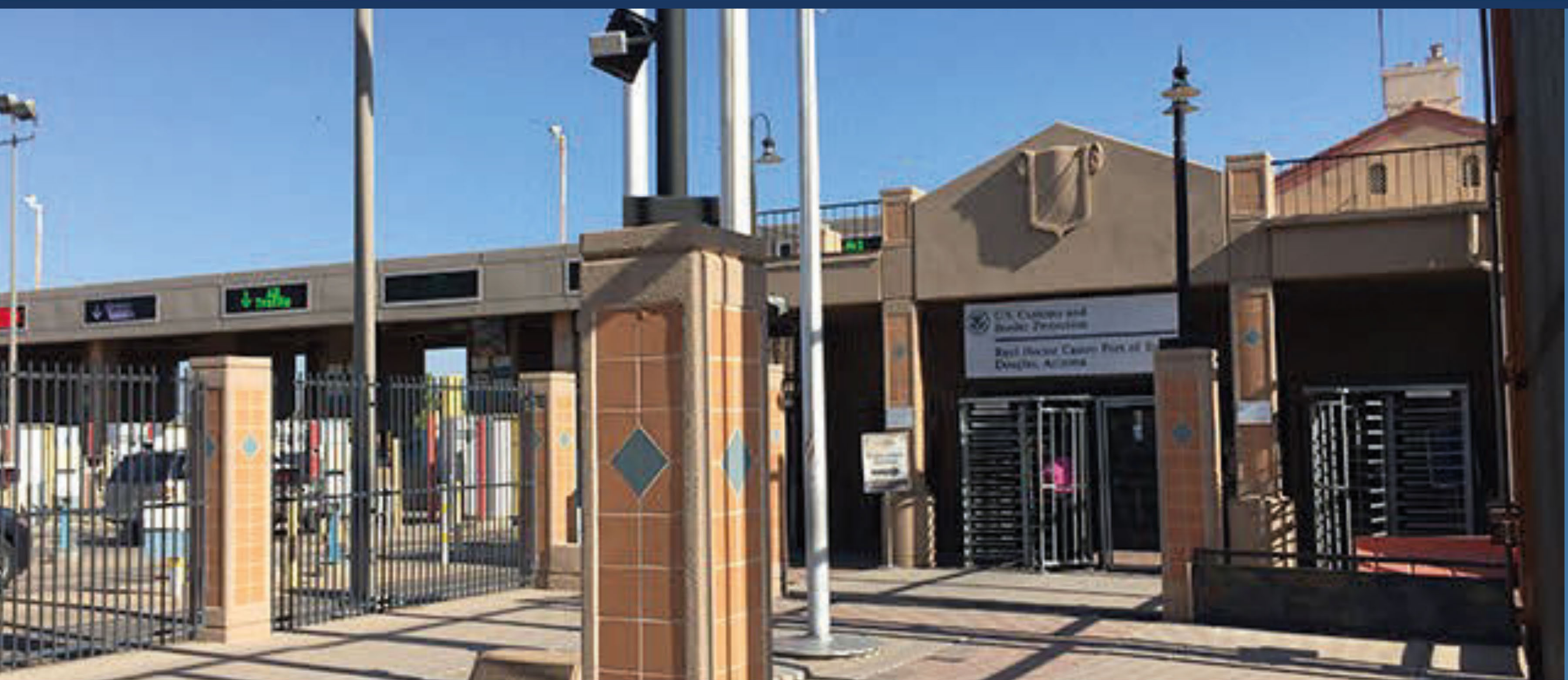
WELCOME

GSA

EXPANSION AND MODERNIZATION OF THE
RAUL HECTOR CASTRO LAND PORT OF ENTRY AND
PROPOSED COMMERCIAL LAND PORT OF ENTRY
DOUGLAS, ARIZONA

ENVIRONMENTAL IMPACT STATEMENT

PUBLIC SCOPING MEETING



August 11, 2022

Douglas Visitor Center

4:00 PM to 6:00 PM

OPEN HOUSE

GSA

WE WANT YOUR COMMENTS!



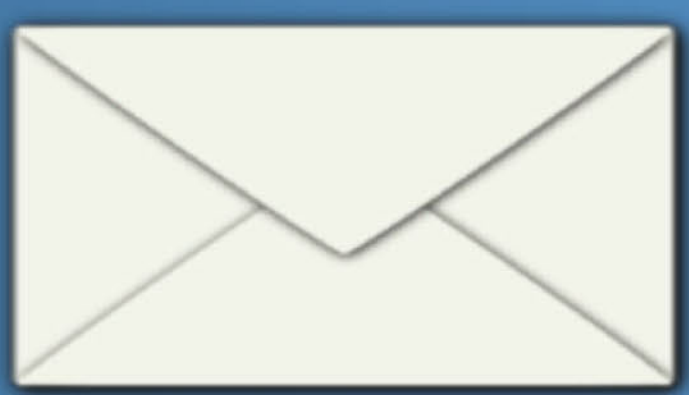
In Writing. Fill out a comment form and submit at this scoping meeting.



By E-mail. Send comments to:

osmahn.kadri@gsa.gov

(Please include “Douglas Scoping Comment” in subject line.)



By Mail. Send comments to:

Attention: Osmahn Kadri, NEPA Project Manager
General Services Administration
c/o Potomac-Hudson Engineering, Inc.
77 Upper Rock Circle, Suite 302
Rockville, MD 20850

GSA welcomes public input on the resources and issues that are important to you.

Public scoping comments must be received by August 22, 2022.

NEPA TIMELINE

RHC LPOE, Douglas, AZ

Environmental Impact Statement



NOTICE OF INTENT

Published in
Federal Register
[July 14, 2022]

**PUBLIC SCOPING
COMMENT PERIOD**

Public Scoping Meeting
August 11, 2022

★
We are here

DRAFT EIS

**DRAFT EIS
COMMENT PERIOD**

Public Meeting
Early 2023

FINAL EIS

**FINAL EIS
WAIT PERIOD**

Public Meeting
Summer 2023

**RECORD OF
DECISION**

Opportunities for Public Involvement

KEY STEPS

Internal Scoping

- The U.S. General Services Administration (GSA) identifies a need to update the Raul Hector Castro (RHC) Land Port of Entry (LPOE) with current land port design standards and operational requirements of the Customs and Border Protection while addressing existing deficiencies identified with ongoing port operations.
- GSA conducts a Feasibility Study to explore viable alternatives to accommodate the RHC LPOE operations.

Public Scoping Period

- GSA publishes a Notice of Intent on July 14, 2022 in the *Federal Register* to prepare an EIS for public review and announces a Public Scoping Meeting to describe the project, solicit comments, and listen to community concerns and interests before preparation of the EIS. The Public Scoping Period begins, during which the public may submit comments on issues that should be considered in the EIS. Public Scoping Period ends August 22, 2022.
- August 11, 2022, GSA conducts a Public Scoping Meeting at the Douglas Visitor Center, AZ. **[WE ARE HERE]**

Develop Draft EIS

- Draft EIS developed to analyze potential impacts to the natural and human environment.
- Public comments received during the Public Scoping Period are considered during the preparation of the Draft EIS.
- Required consultations initiated with federal and state agencies to comply with laws and regulations (e.g., Endangered Species Act, National Historic Preservation Act).

Public Comment Period

- GSA publishes a Notice of Availability in the *Federal Register* and local media informing the public that the Draft EIS is available for public review (*Early 2023*).
- 45-day Public Comment Period, which will include a public meeting.
- Written comments on the contents of the Draft EIS accepted via U.S. mail, e-mail, or in-person at the public meeting.

Develop Final EIS

- Complete required consultations with agencies.
- Review, consider, and address, as appropriate, the public comments received.
- Revise and finalize the EIS.

Final EIS and ROD Issued

- Final EIS is completed. [*Summer 2023*]
- Prepare a Record of Decision (ROD).
- 30-day waiting period, which may include a public meeting.
- Written comments on the contents of the Final EIS accepted via U.S. mail, e-mail, or in-person at a public meeting.
- After no less than 30 days, sign the ROD.
- Implement the decision selected in the ROD.

Federal agencies are required under the National Environmental Policy Act (NEPA) to integrate environmental values into planning and decision-making processes by considering the environmental impacts of proposed actions and reasonable alternatives to those actions through a systematic, interdisciplinary approach.

PROJECT BACKGROUND

RHC LPOE, Douglas, AZ

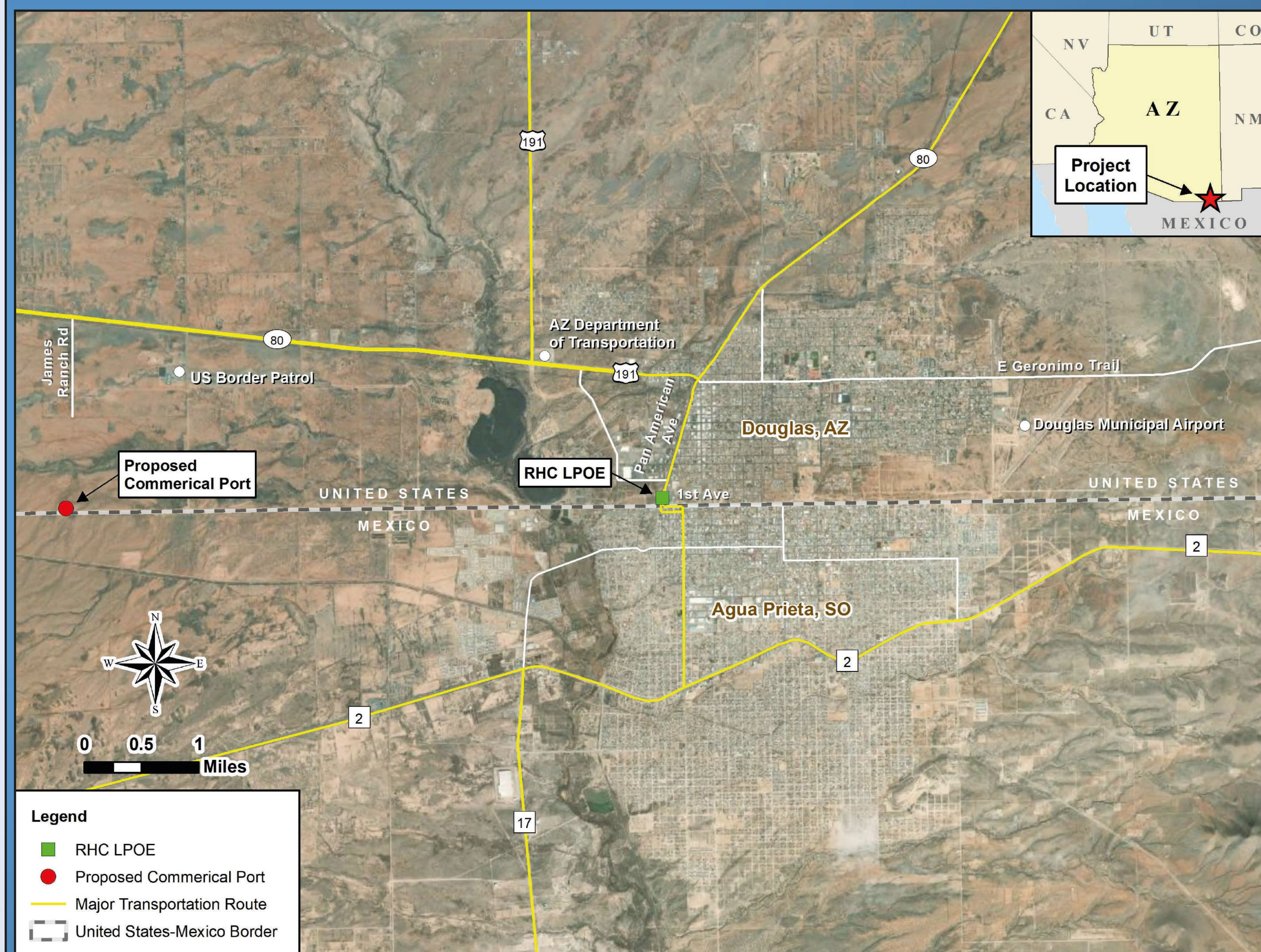
Environmental Impact Statement



The Raul Hector Castro (RHC) Land Port of Entry (LPOE) is owned and managed by the U.S. General Services Administration (GSA) and operated by the U.S. Department of Homeland Security's Customs and Border Protection (CBP). The RHC LPOE is a port of entry for vehicles and pedestrians crossing the U.S.-Mexico border, between Douglas, Arizona and Agua Prieta, Sonora in Mexico. The port is a full-service, multi-modal facility where CBP officers inspect commercially-owned vehicles (COVs), privately-owned vehicles (POVs), and pedestrians.

The RHC LPOE has operated since 1914, with existing facilities constructed in the 1930s. Facilities within the RHC LPOE include the historic Main Building and Garage. Due to steady increases in traffic, poor pedestrian infrastructure, lack of separation between traffic types (COV, POV, and pedestrian), and outdated facilities and technologies, the facilities at the RHC LPOE no longer function adequately and pose safety and security risks for CBP officers and the general public. The existing RHC LPOE has limited opportunity for expansion within its current footprint. The existing facilities also have limited interior space for offices and processing. Additionally, truck traffic is routed through downtown Douglas and is a safety concern for the community.

To address these issues, GSA is proposing to expand and modernize the existing RHC LPOE and construct a new Commercial LPOE to the west of the existing port. The Environmental Impact Statement (EIS) will analyze the potential environmental impacts of the project.



Project Location (RHC LPOE and Proposed Commercial LPOE)

PURPOSE AND NEED

RHC LPOE, Douglas, AZ

Environmental Impact Statement



Purpose. The purpose of the Proposed Action is for GSA to support Customs and Border Protection's (CBP) mission by bringing the RHC LPOE operations in line with current land port design standards and operational requirements of CBP while addressing existing deficiencies identified with the ongoing port operations.

Need. The Proposed Action is needed to:

- ◆ Improve the capacity and functionality of the port to meet future demand, while maintaining the capability to meet border security initiatives;
- ◆ Ensure the safety and security for the employees and users of the RHC LPOE; and
- ◆ Improve traffic congestion and safety for the City of Douglas.



PROPOSED ACTION

RHC LPOE, Douglas, AZ

Environmental Impact Statement



The project consists of two main components:

- 1) Construction of a **new Commercial LPOE** (Figure 1), at a site located approximately 5 miles west of the existing port, dedicated to processing only commercial vehicles; and
- 2) Expansion and modernization of the existing RHC LPOE to a **Non-Commercial LPOE** (Figure 2), dedicated to processing only personal vehicles and pedestrians.

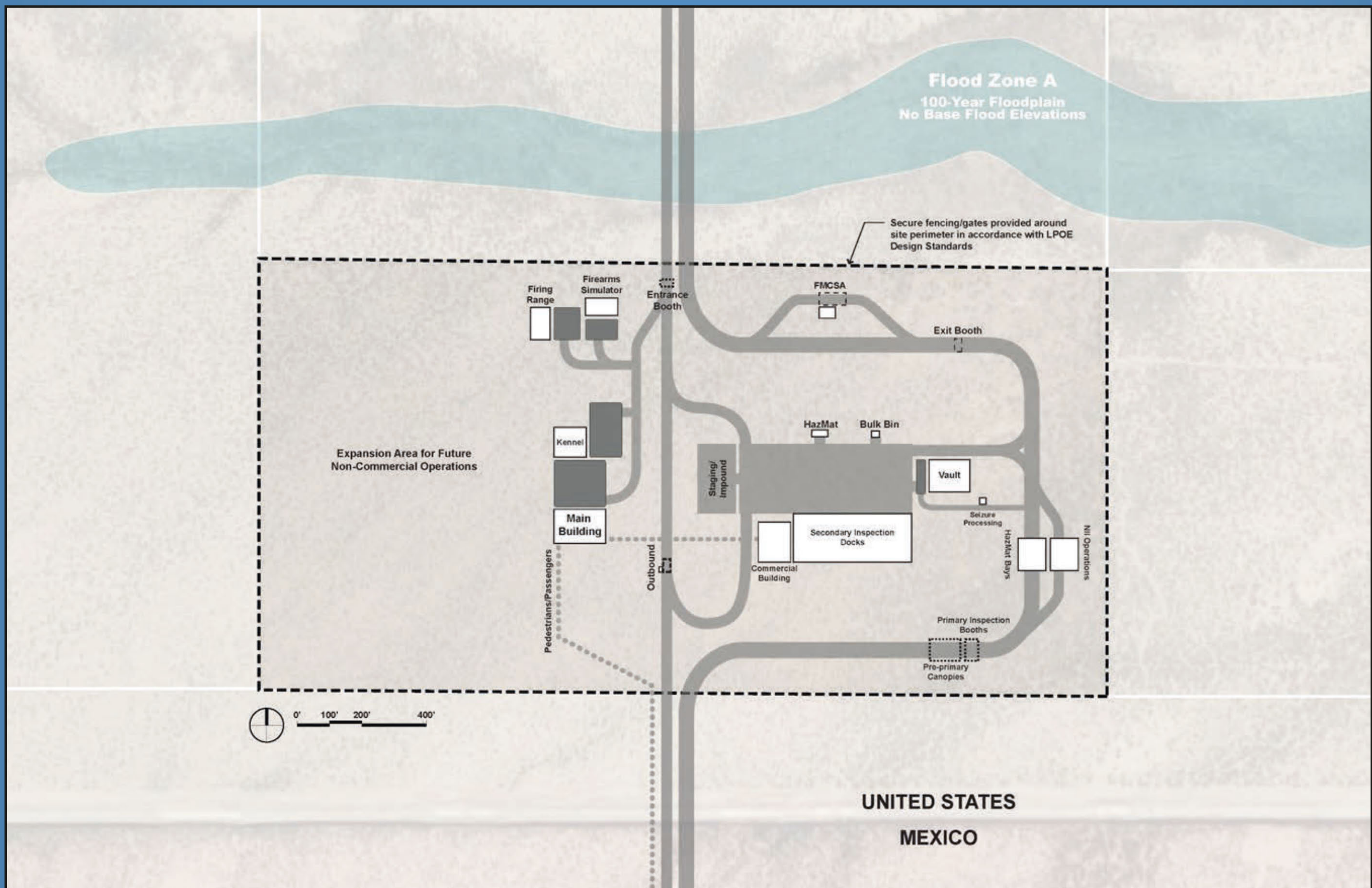


Figure 1. Conceptual Layout of Proposed New Commercial LPOE

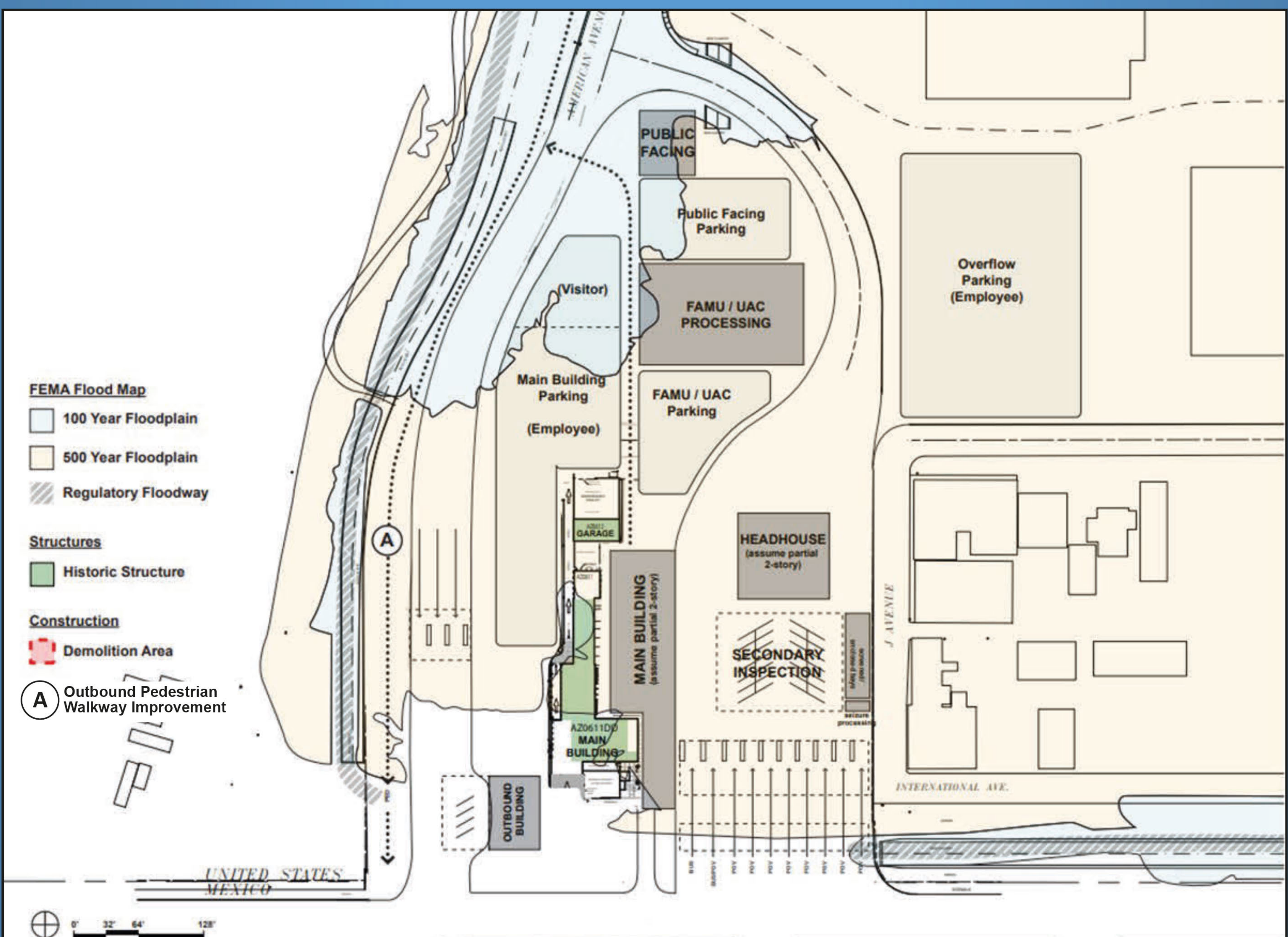


Figure 2. Conceptual Layout of Non-Commercial RHC LPOE During Final Construction Phase

PROPOSED ALTERNATIVES

RHC LPOE, Douglas, AZ

Environmental Impact Statement



The EIS will consider two “action” alternatives:

- ◆ **Alternative 1.** Includes construction of the new Commercial LPOE first, followed by a phased expansion and modernization of the existing RHC LPOE *after* the Commercial LPOE is operational.
- ◆ **Alternative 2.** Includes construction of the new Commercial LPOE and phased expansion and modernization of the existing RHC LPOE *at the same time*, to include land acquisition near the existing RHC LPOE, allowing expansion and modernization activities to occur while the existing RHC LPOE remains operational.

Both alternatives would require land acquisition (see figure) and phased construction at the RHC LPOE.



Expansion Areas for Alternative 1 and Alternative 2