

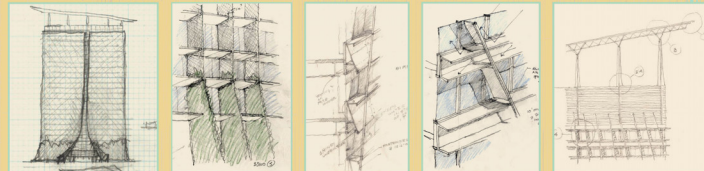
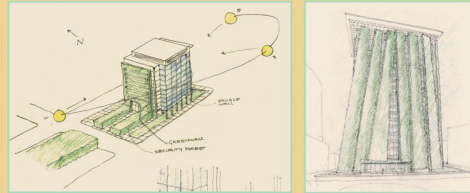
A VISION FOR THE FUTURE RENEWAL BY DESIGN

EXTERIOR

EVOLUTION OF FINS & REEDS

At the outset, the building's orientation to the sun was studied to determine where shading would be most beneficial.

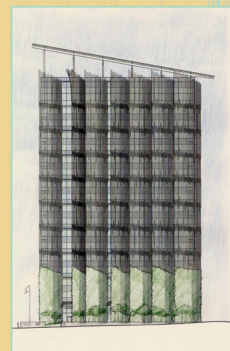
The 2006 and 2009 designs used planters on the west façade to shade the building with vines. The "fins" were an effort to incorporate living systems and the natural seasonal cycles of deciduous vegetation into the mechanical systems of the building. They were intended to be a visual symbol of our government's commitment to have a more benign relationship with the living world.



The replacement of the existing concrete panels of the building with a high performance curtain wall was, from the very beginning of the project, a fundamental driver of the design. The flush/smooth detailed design of the curtain wall contrasts it with the multiple shading devices thus making all of those appendages, which are a different response to each sun exposure, the story of the building.

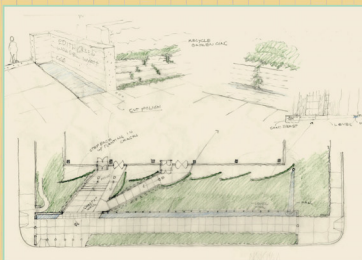
The "reeds" were developed through an interactive process with Benson Industries to find a fixed, low maintenance, permanent replacement for the vegetated fins concept. They are designed to be both functional and symbolic.

The PV canopy makes the building technically more energy efficient by providing area for solar panels and water collection. It was intended to be a symbol of the building's commitment to sustainability and a recognition and reflection of our rainy environment.



LANDSCAPE

The landscape melds the climbing plants on the reeds into the ground plane. To fit the building into this environment, a native ecosystem unique to each face and light exposure was created.



"All of those appendages, which are a different response to each sun exposure, are the story of the building."

– JIM CUTLER

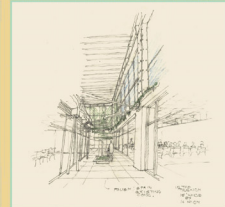
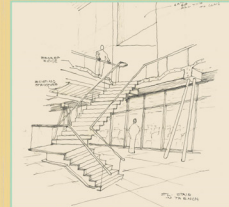
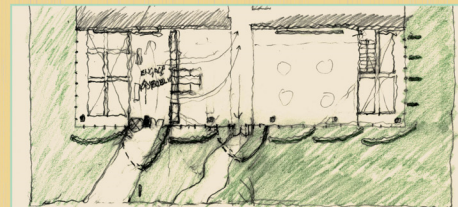
INTERIOR

CREATING CONNECTIVITY

In response to GSA's First Impressions program, the entry was moved to the corner to provide a more gracious welcome to the building. The lobbies and the security areas are more humane and inviting while staying simple. That simplicity makes the artwork and the crude existing structure more apparent.

Cutting openings in the lobby slab and adding two monumental stairs brings both physical and visual connection between the two most public floors of the building. The openings and the courtyard also bring abundant natural daylight to the ground floor.

All of the exposed elements were kept visible to honor the tradesman that built the building, to tell the story of the validity of reusing existing structure and the truth about the history of the building.



ART IN ARCHITECTURE PROGRAM

REMOVAL & CONSERVATION

During construction the two artworks created for the original 1974 building, *River Legend* by Dimitri Hadzi, a stone sculpture and *Rumi's Dance* by Jack Youngerman, a wall-hung tapestry were removed and conserved.

A 3D laser scan of the sculpture was used to design a space frame armature to safely support the sculpture during removal and storage. The tapestry underwent extensive conservation to remove damage from a fire and exposure to the sun. Both pieces have been reinstalled in new locations that improve viewing and will protect them from damage over time.

SELECTION & INSPIRATION

Two artists, Tim Bavington and Vera Lutter, were selected in accordance with GSA's Art in Architecture program to create new original artwork for the modernized building.

Mr. Bavington's work, *Louie, Louie* is a wall-hung 3D elaboration of the artist's vibrant, colorful, popular music-themed expressions. Constructed of acrylic sheet, his work is integrated into the lobby wall near the building entry.

Ms. Lutter's *Untitled* employs the artist's site-based, camera-obscure technique to create a monumental film photo print. The artist's subject, a Pacific Northwest old-growth forest is presented as a freestanding screen to be viewed from multiple locations in the expansive lobby.



DIMITRI HADZI
RIVER LEGEND, 1976



JACK YOUNGERMAN
RUMI'S DANCE, 1976



TIM BAVINGTON
LOUIE LOUIE, 2013

Install May 2013



VERA LUTTER
UNTITLED, 2013

Install Fall 2013

EDITH GREEN-WENDELL WYATT FEDERAL BUILDING