



GSA Public Buildings Service

Fast Track Space



PBS National Customer Forum

July 25, 2023

Washington, DC

Workplace Offering - Fast Track Space



Ryan Doerfler

Senior Workplace Strategist
Center for Workplace Strategy
GSA PBS



Tasneem Bhabhrawala

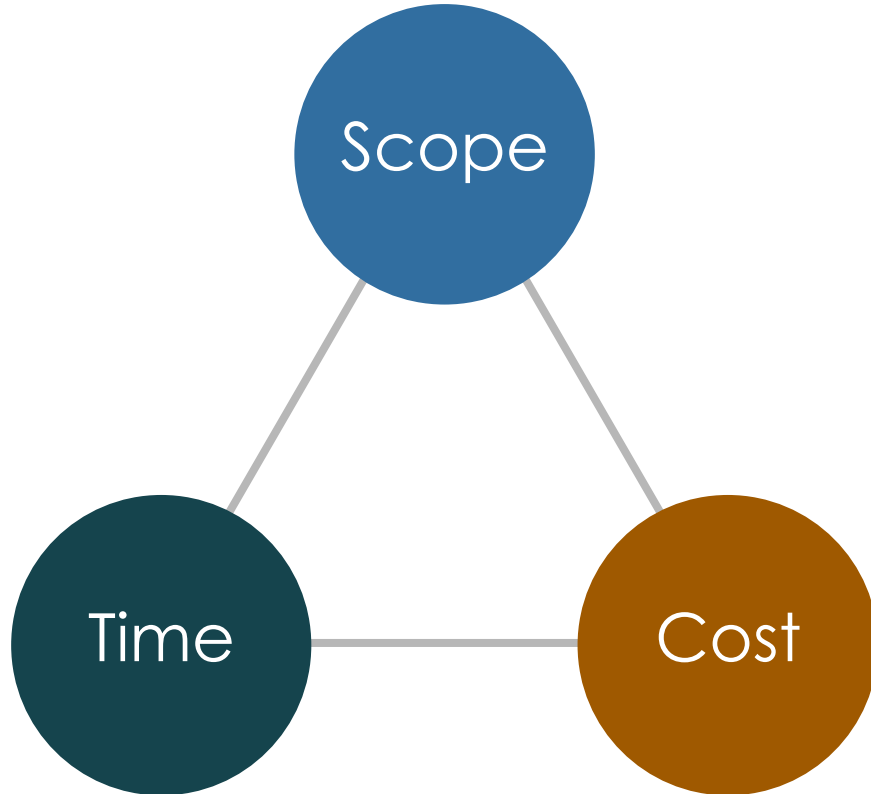
Director, Customer Programs Division
Office of Portfolio Management and
Customer Engagement
GSA PBS

An architectural rendering of a modern, multi-story courthouse building. The building features a prominent central entrance with a curved canopy and large glass windows. The entire image is overlaid with a semi-transparent blue filter. The text "Design Concept" is centered in a bold, orange font. At the bottom, the words "UNITED STATES COURTHOUSE" are faintly visible in a light blue, serif font.

Design Concept

UNITED STATES COURTHOUSE

Triple Constraint - Pick 2



Scope

Customize all aspects of the workplace, including furniture and finishes

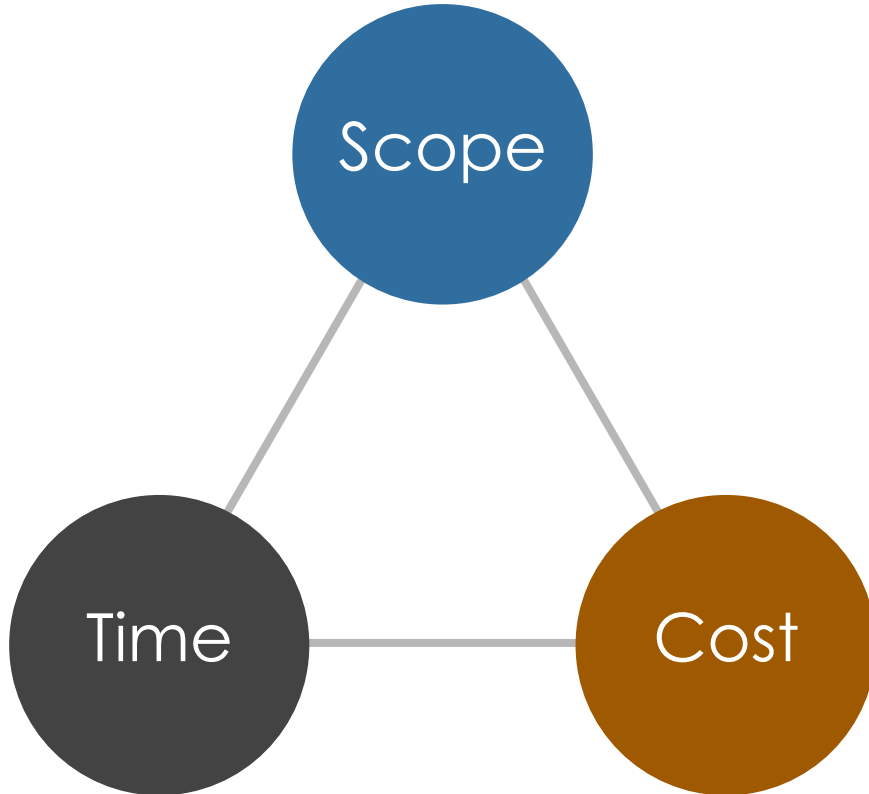
Cost / Budget

Minimize overall project costs, including TI and requirements development

Time / Schedule

Occupy new workplace as fast as possible

Custom Req. Development



Scope

Customize all aspects of the workplace, including furniture and finishes

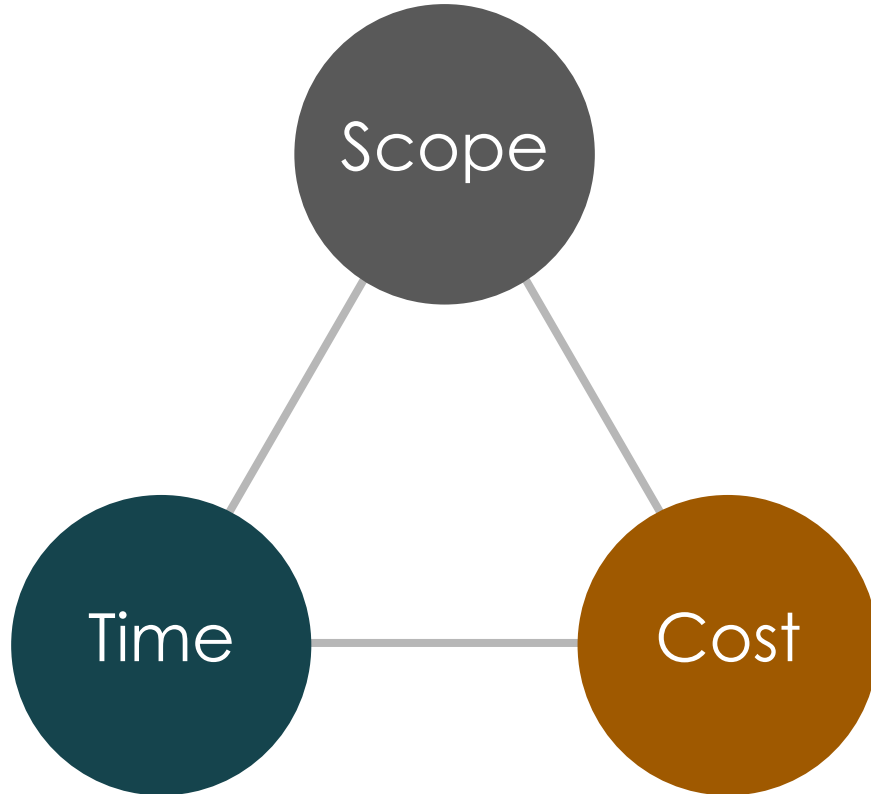
Cost / Budget

Minimize overall project costs, including TI and requirements development

Time / Schedule

Occupy new workplace as fast as possible

Fast Track Space



Scope

Customize all aspects of the workplace, including furniture and finishes

Cost / Budget

Minimize overall project costs, including TI and requirements development

Time / Schedule

Occupy new workplace as fast as possible

Analogy



Custom Home

(Customized Requirements Development)



vs.

Spec Home

(Fast Track Space)



Lease Analogy



**Writing a Lease
from Scratch**



vs.

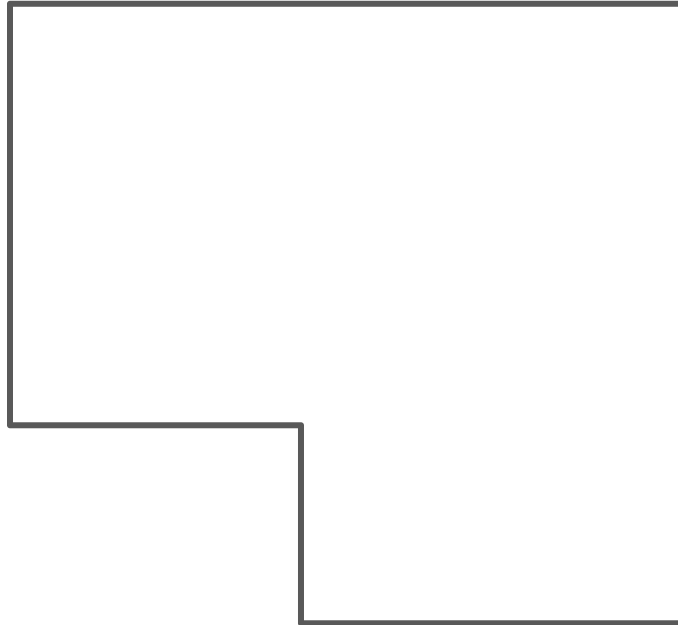
**Starting with a
Boilerplate Lease**



A different starting point



Workplace Engagement (Full Customization)









vs.

Fast Track Space Solution (Limited Customization)



Project Applicability



Type	Schedule	Engagement / Customization	Notes
Fast Track (Modular)	▶▶▶▶		Standardized requirements/design approach that is completed during the planning phase which utilizes Fast Track modular designs to meet agency requirements.
Traditional Requirements Development	▶▶	 	The GSA planning manager and project manager partner with the customer agency to develop strategic, functional and technical requirements.
Workplace Engagement (Workplace 2030)	▶	  	The GSA workplace program and its Regional Workplace Executives partners with agencies to create a customized workplace program to advance new workplace strategies across their real estate portfolio.



Benefits

UNITED STATES COURTHOUSE

Benefit Explained



Accelerated Schedule

- Requirements Development & DID Design acceleration
- Functional cost estimate → Budget planning accuracy → Prevents delays

Market Friendly Approach

- Accelerated schedule → Earlier completion → Lessor friendly approach

Less Effort / More Value

- Requirements Development & DID Design level of effort savings for GSA & Agency

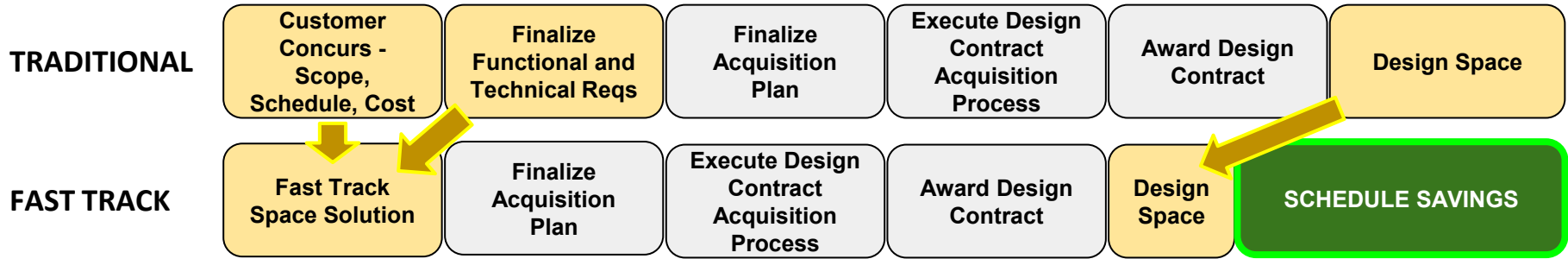
Designed for Hybrid Work

- Workplaces created with hybrid work in mind
- Improved space utilization through desk sharing and smaller workstations

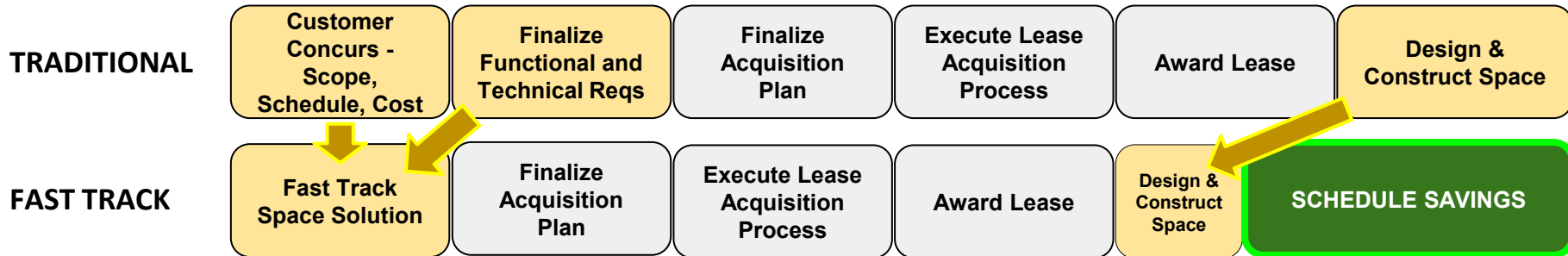
Accelerated Schedule



Owned



Leased



Considerations



100% Office Space

- With the exception of break areas & kitchenettes, no special spaces.

Limited Customization Options

- Some choices, such as workstation sizes, will be offered in a curated manner.



Process & Deliverables

UNITED STATES COURTHOUSE

Overall Approach



1. Identify Potential Model Plan(s)

Choose from one of our model office floor plans that offer various size, style and layout options. Each model has the potential to be modified to meet mission needs.

2. Firm Up Model(s) with Calculator

Use Fast Track Space calculator to understand cost implications and occupancy data for the selected model(s). The model selection can be modified as needed.

3. Customize plans to meet agency preferences

Individual workspaces and support spaces are adjusted within overall space type.

4. Finalize Requirements Package

Model Plans provided in AutoCAD that can be adjusted once the final location floor plate configuration is known, such as during the DID workshop. Additionally, cost estimates for TI and furniture are provided.

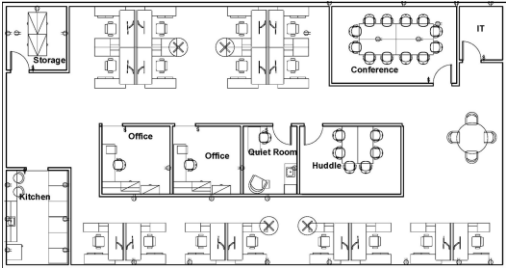
1

Create new workplace using a mix of pre-designed model plans.



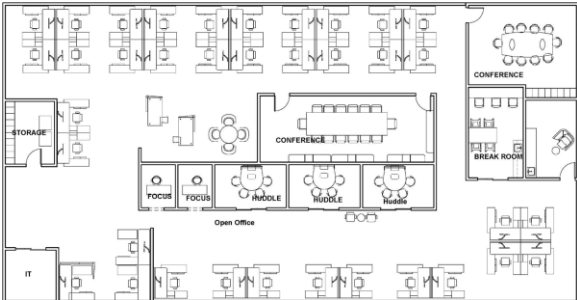
Model A : 3,500 sf.

18 people with no desk sharing



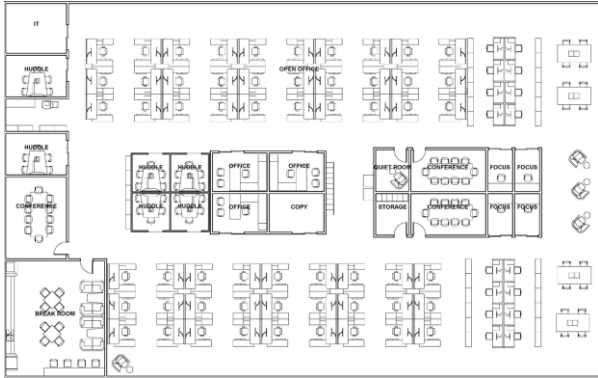
Model B : 6,500 sf.

36 people with no desk sharing



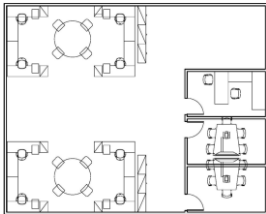
Model C : 12,500 sf.

76 people with no desk sharing



Model Plus : 1,500 sf.

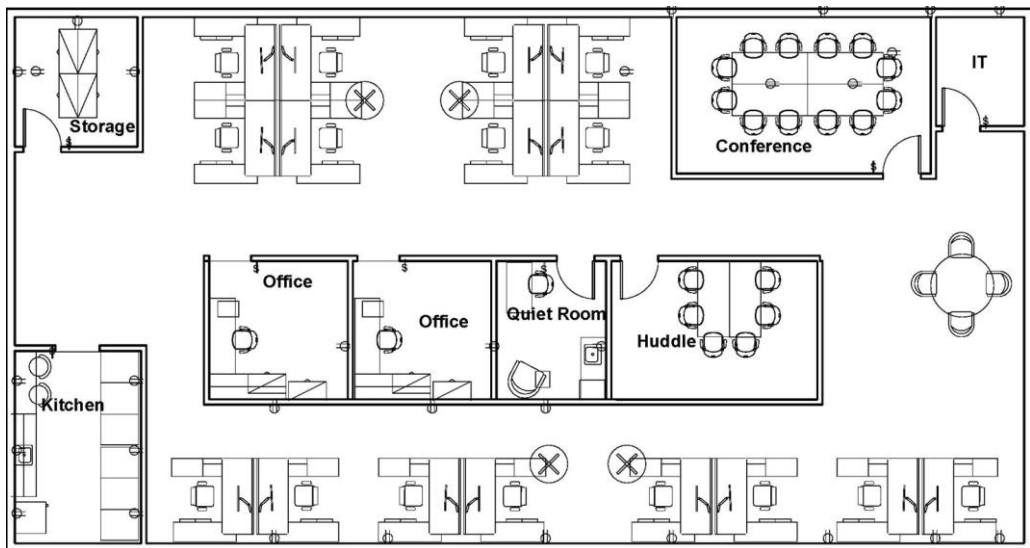
9 people with no desk sharing



Note: Models can accommodate more staff if a desk sharing ratio is established

1

Model A : 3,500 USF



Capacity as Shown:

- 18 people with no desk sharing
- 27 people with desk sharing ratio of 1.5 people/seat

Individual Workspaces

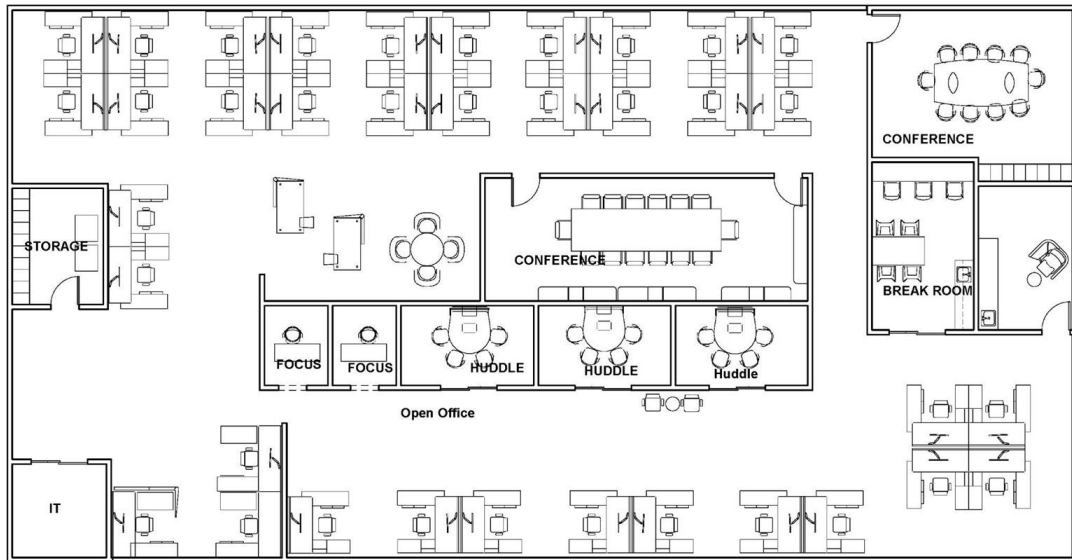
- 16 Workstations
- 2 Private Offices

Standard Support Spaces

- Large Conference Room (12 person)
- Huddle Room (6 person)
- Quiet Room
- Open Meeting Table (4 person)
- Kitchen Area
- Storage Room
- IT room

1

Model B : 6,500 USF



Capacity as Shown:

- 36 people with no desk sharing
- 54 people with desk sharing ratio of 1.5 people/seat

Individual Workspaces

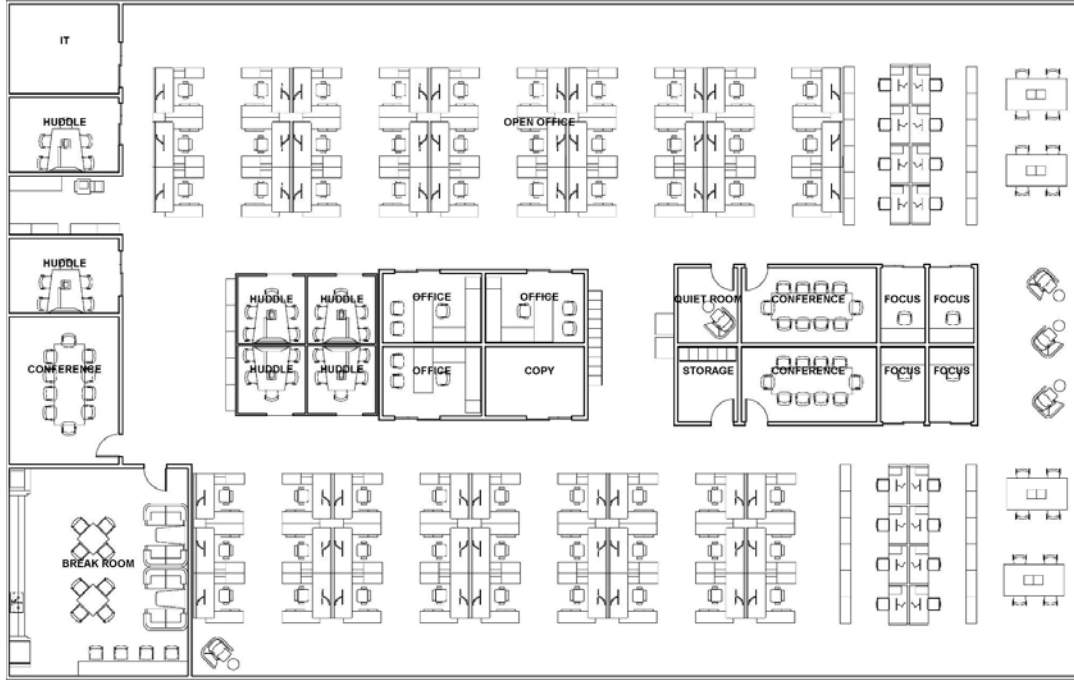
- 36 Workstations
- 0 Private Offices

Standard Support Spaces

- 2 Large Conference Rooms (10 & 14 person)
- 3 Huddle Rooms (4 person)
- 2 Focus Rooms (1 person)
- 1 Mother's Room
- Break Room (seating for 7)
- Storage/File/Copier/Locker Room
- IT room
- Collaboration Zone

1

Model C : 12,500 USF



Capacity as Shown:

- 76 people with no desk sharing
- 114 people with desk sharing ratio of 1.5 people/seat

Individual Workspaces

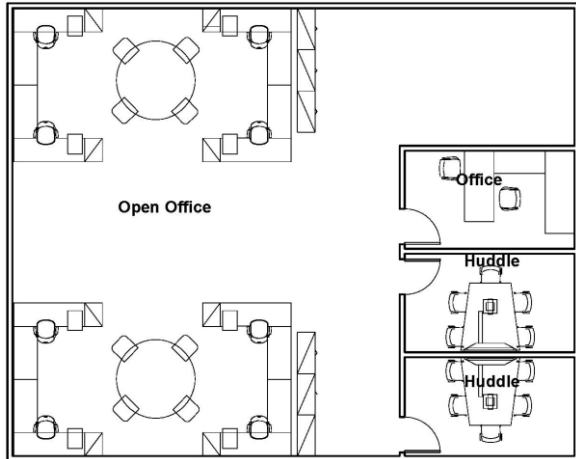
- 57 Workstations
- 16 Benching stations
- 3 Private Offices

Standard Support Spaces

- 3 Large Conference Rooms (10 person)
- 6 Huddle Rooms (5 person)
- 4 Focus Rooms (1 person)
- Quiet Room
- Copy Room
- 4 Open Meeting Tables (4 person)
- Break Room (seating for 20 people)
- Storage Room
- IT room

1

Model + : 1,500 USF



Capacity as Shown:

- 9 people with no desk sharing
- 13 people with desk sharing ratio of 1.5 people/seat

Individual Workspaces

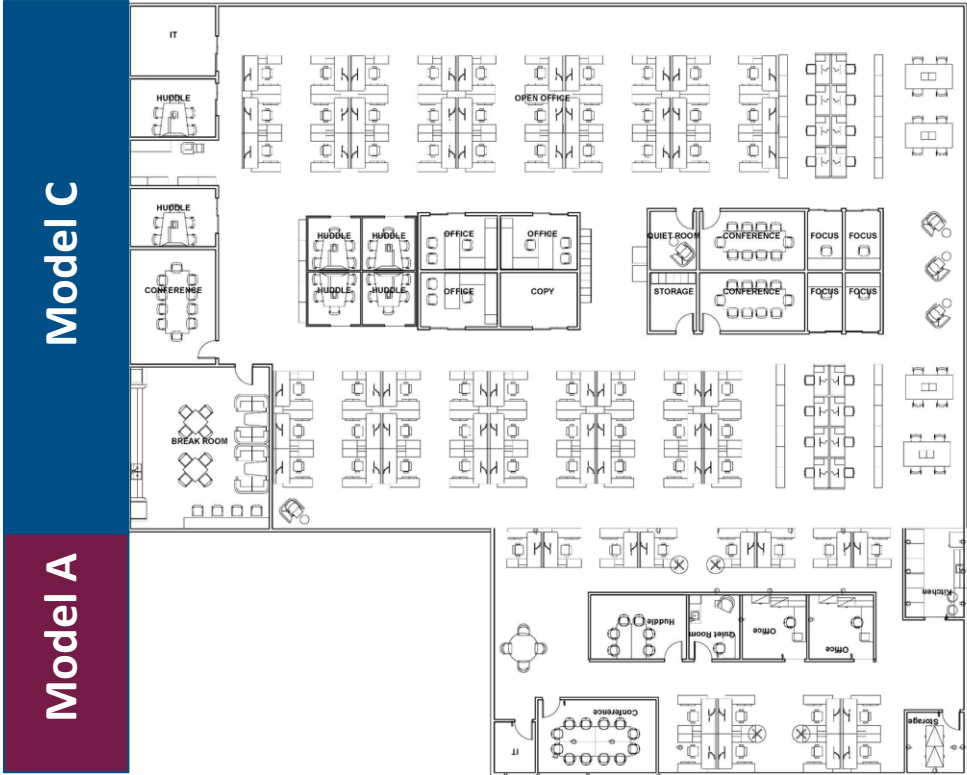
- 8 Workstations
- 1 Private Offices

Standard Support Spaces

- 2 Huddle Rooms (5 person)
- 2 Open Meeting Tables (4 person)
- File / Printer Area

1


Combining Models



**Combined Area:
16,000 USF**

**Combined
Capacity:
94 people
without desk
sharing**





Fast Track Space Calculation Tool (v 1.0)

INSTRUCTIONS : Complete all beige shaded boxes below. The Calculation Tool will automatically calculate space and costs for tenant improvement. Adjust the desk sharing participation rate, desk sharing ratio, or selected model plans until blue Headcount Seat section matches agency's needs. Details calculations can be found in the "Space Calculations", "TI Estimate", and "Furniture Estimate" tabs. These tabs are unlocked in case future editing is needed.

Project Details

Project Name	An Awesome Workplace Project	
Agency	A Great Agency	
Future Location : State	District of Columbia	City Washington
Occupancy Year	2027	Location Type Leased
Total Future Headcount	140 people	
Desk Sharing : Participation %	30%	Ratio 1.5 people : 1 seat

Quantity of Base Model Plans

Model A (3,500 usf / 18 seats)	1
Model B (6,500 usf / 36 seats)	1
Model C (12,500 usf / 76 seats)	1

use as add-on only

Model + (1,500 usf / 9 seats)	1
-------------------------------	---

Summary Concept Design Calculations

Space	
Workstations	5,215 usf
Offices	720 usf
Collaboration Spaces	4,346 usf
Other Standard Support	1,748 usf
Internal Circulation	11,971 usf
Total Usable Area	24,000 usf
All-In Utilization Rate	171 usf/person

Functional Estimate - Tenant Improvement	
Total TI Estimate (+/- 20%)	≈ \$3,989,014
Average \$/USF (+/- 20%)	≈ \$166.21 / usf

Cost - Furniture	
Individual Workspaces	≈ \$531,471
Standard Support Spaces	≈ \$147,446
Installation	≈ \$135,783
Escalation to Move-In Year	≈ \$100,156
Total Furniture Estimate	≈ \$914,856

Headcount Seating	
Available desk seats based on selected Models	139 seats
Personnel needing a desk	126 seats

There are 13 seats extra for additional personnel or visitors

Calculates

- Space Program
- ROM Tenant Improvement Estimate
- ROM Furniture Estimate based on FIT

Key Features

- easy selection of Models
- adjusts estimates for escalation based on anticipated occupancy year
- includes locality adjustment
- shows needed seats based on headcount and desk sharing
- TI estimate also serves as functional estimate for TI Allowance

3

Customize plans to meet agency preferences and employee work styles



Space Design

- change workstation sizes
- change private offices to focus or meeting rooms
- merge small meeting rooms into larger rooms
- select finishes

Furniture & Equipment

- change furniture components
- choose type of furniture within the overall plan size
- add office equipment in the circulation and storage rooms

4 Finalize Requirements Package



- **Conceptual Design Floor Layout**

Model Plans provided in AutoCAD that can be adjusted once the final location floor plate configuration is known, such as during the DID workshop.

- **Detailed Space Program**

Automatically generated by the Fast Track Model Selection tool, this space calculation can be edited to reflect the actual amount of circulation needed at the final location.

- **Rough Order of Magnitude TI Estimate**

Automatically generated by the Fast Track Model Selection tool, this estimate can be used as the **functional** estimate for TI allowance.

- **Furniture Inventory and Estimate**

Automatically generated by the Fast Track Model Selection tool, these details can be used during the furniture procurement.

- **Level 1+ Design Intent Drawings**

DIDs that are in-between Level 1 and Level 2 in detail.



Sample Project

UNITED STATES COURTHOUSE

Sample Project Detailed

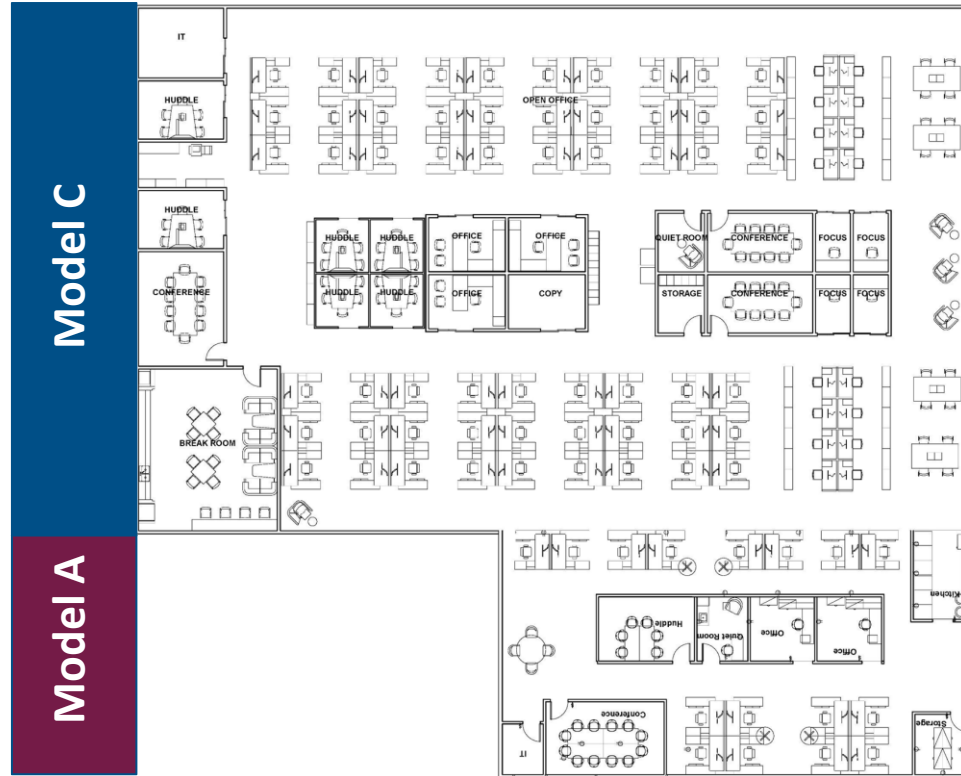


- Initial Requirement is 45,410 usf for 239 people
- 2024 occupancy
- Very flexible telework program
- Seattle, Washington
- All office; no special space
- Urgent need, with little time to develop requirements or deliver the space

Example Client Project Agreement

Part 2a: Space Type Information				
Anticipated R/U Factor	1.20	All in UR	190	
Number of Occupants	239			
Square Feet Per Person	0			
			USF*	RSF
Office Space			45,410	54,492
Office Support Space			0	0
Special Space Subtotal			0	0
Space Type	Space Types		0	0
Space Type	Space Types		0	0
Warehouse (WRH) (occupied or unoccupied)			0	0
Total Square Feet			45,410	54,492

Best Fit : Model C+A (16,00 usf)



**Combined Area:
16,000 USF**



**Combined
Capacity:
94 people
without desk
sharing**

Sample Project Results



Fast Track Space Calculation Tool (v 1.0)

INSTRUCTIONS: Complete all beige shaded boxes below. The Calculation Tool will automatically calculate space and costs for tenant improvement. Adjust the desk sharing participation rate, desk sharing ratio, or selected model plans until blue Headcount Seat section matches agency's needs. Details calculations can be found in the "Space Calculations", "TI Estimate", and "Furniture Estimate" tabs. These tabs are unlocked in case future editing is needed.

Project Details		Quantity of Base Model Plans	
Project Name	An Awesome Workplace Project	Model A (3,500 usf / 18 seats)	1
Agency	A Great Agency	Model B (6,500 usf / 36 seats)	
Future Location - State	Washington	City	Seattle
Occupancy Year	2024	Location Type	Leased
Total Future Headcount	239 people		
Desk Sharing - Participation %	100%	Ratio	3.0 people : 1 seat
		use as add-on only	
		Model + (1,500 usf / 9 seats)	

Summary Concept Design Calculations	
Space	
Workstations	3,379 usf
Offices	600 usf
Collaboration Spaces	2,917 usf
Other Standard Support	1,334 usf
Internal Circulation	7,770 usf
Total Usable Area	16,000 usf
All-In Utilization Rate	67 usf/person
Headcount Seating	
Available desk seats based on selected Models	94 seats
Personnel needing a desk	80 seats
There are 14 seats extra for additional personnel or visitors	
Functional Estimate - Tenant Improvement	
Total TI Estimate (+/- 20%)	≈ \$2,701,531
Average \$/USF (+/- 20%)	≈ \$168.85 / usf
Cost - Furniture	
Individual Workspaces	≈ \$355,795
Standard Support Spaces	≈ \$110,773
Installation	≈ \$93,314
Escalation to Move-In Year	≈ \$16,330
Total Furniture Estimate	≈ \$576,212

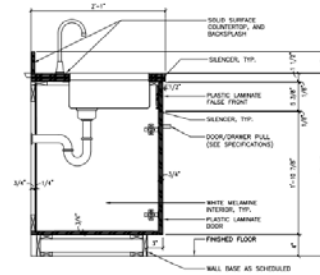
Sample Project Results

- Lowered USF from 45,410 to 16,000
- Desk sharing ratio of 3 people per seat
- Able to accommodate the number of personnel (239) + an additional 14 visitors or unexpected FTE
- Average TI cost if \$169/usf, adjusted for locality - can be used as functional estimate
- Total furniture estimate is approx. \$577K
- Detailed calculations of space, TI, and furniture and be used for next stages of project (e.g., furniture ordering)

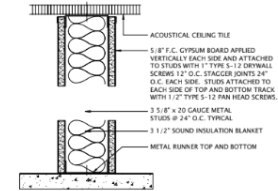
Level 1+ DIDs



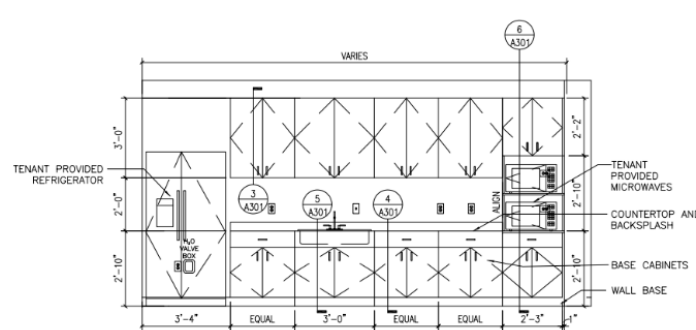
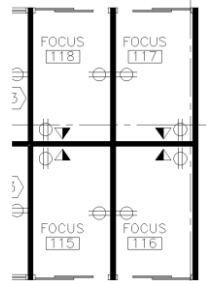
- Cover Sheet
- General Notes & Drawing Index
- Demolition Plan - Sample
- Construction Plan
- Power/Communications Plan
- Furniture Plan
- Finish Plan
- Elevations
- Sections
- Partition Sections
- Door Schedule



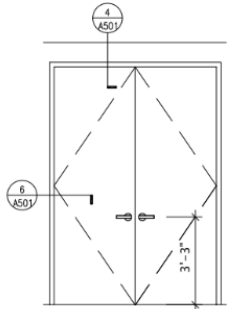
5 BASE CABINET WITH SINK
SCALE: 1/2" = 1'-0"



1 STANDARD PARTITION DETAIL
SCALE: 3\"/>



3 ELEVATION BREAK AREA
SCALE: 1/2" = 1'-0"



D SOLID CORE, DBL FLUSH WOOD
SCALE: 1/2" = 1'-0"

ALL DIDs (pdf and REVIT) for all models are located [HERE](#)

Next Steps



1. Project team begins acquisition activities
2. Lease
 - a. DID is packaged with the RLP (optional)
 - b. Offer Evaluation & Lease Award
 - c. Post-Award DID Workshop starts with a schematic plan in which the Lessor adapted the Fast Track Design to his/her floorplate
3. Federal
 - a. DID is packaged with A/E Solicitation
 - b. Offer Evaluation and Award
 - c. Post-Award DID Workshop starts with a schematic plan in which the A/E adapts the Fast Track Design to the federal floorplate

Resources

GSA [YouTube Fast Track Space Video](#)

[GSA.GOV/Workplace](#)



Want to learn more?

Reach out to GSA at workplace@gsa.gov.

UNITED STATES COURTHOUSE