



June 2, 2015

This version of the GSA Building Information Modeling (BIM) Guide 05 - Energy Performance is identified as version 2.1. The main goals of the update are as follows:

- Making the content more accessible by using plain language
- Clarifying GSA's minimum requirements

GSA invites the public to submit feedback on this document, as it will continue to serve as the basis for further development, pilot validation, and professional editing. GSA will continue to issue updated versions to address and incorporate on-going feedback in an open and collaborative process.

Currently, the following BIM Guides are available for download at <http://www.gsa.gov/bim>:

- GSA BIM Guide 01 - 3D-4D-BIM Overview
- GSA BIM Guide 02 - Spatial Program Validation
- GSA BIM Guide 03 - 3D Laser Scanning
- GSA BIM Guide 04 - 4D Phasing
- GSA BIM Guide 05 - Energy Performance
- GSA BIM Guide 08 - Facility Management

Readers are encouraged to review all available BIM Guides and apply them as appropriate when creating their BIM Execution Plans. For further information about GSA's National 3D-4D-BIM Program, to download the BIM Guide Series, or to submit comments or questions, please visit <http://www.gsa.gov/bim>.

The National 3D-4D BIM Program  
U.S. General Services Administration  
1800 F Street NW  
Washington, DC 20405



# BIM Guide 05 Energy Performance

GSA BIM Guide 05

[www.gsa.gov/bim](http://www.gsa.gov/bim)





GSA Building Information Modeling Guide Series

## GSA BIM Guide 05 - Energy Performance

Version 2.1 - June 2, 2015

United States General Services Administration (GSA)



# Table of Contents

- Table of Contents ..... 1
- Foreword ..... 4
- 1 Introduction ..... 6
- 2 Why Energy Modeling ..... 9
  - 2.1 Overview ..... 9
  - 2.2 Preliminary Concept Design ..... 10
  - 2.3 Final Concept Design ..... 10
  - 2.4 Design Development ..... 11
  - 2.5 Construction Documents ..... 12
  - 2.6 Construction ..... 13
  - 2.7 Commissioning ..... 13
  - 2.8 Operations ..... 13
- 3 Choosing Energy Modeling ..... 16
  - 3.1 Overview ..... 16
  - 3.2 Decision Process ..... 16
  - 3.3 Traditional Energy Modeling vs. BIM-Based Energy Modeling ..... 18
  - 3.4 Energy Efficiency and BIM-Based Energy Modeling ..... 19
  - 3.5 Feasibility of BIM-Based Energy Modeling ..... 19
    - 3.5.1 Overview ..... 19
    - 3.5.2 Project Goals and Energy Modeling Scope ..... 20
    - 3.5.3 Project Budget and Schedule ..... 23
    - 3.5.4 Project Resources ..... 23
    - 3.5.5 Energy Modeling Technology ..... 24
- 4 Energy Modeling and BIM ..... 28
  - 4.1 Leveraging BIM Data for Energy Modeling ..... 28
  - 4.2 Data Schemas for Building Information Exchange ..... 28
    - 4.2.1 IFC ..... 29
    - 4.2.2 XML ..... 30
      - 4.2.2.1 gbXML ..... 30
      - 4.2.2.2 ifcXML ..... 31
    - 4.2.3 Open Standard Building Analysis Tools ..... 31
      - 4.2.3.1 Simergy ..... 31
  - 4.3 Deliverable Requirements ..... 32
    - 4.3.1 Requirements of Design Teams ..... 32
    - 4.3.2 Requirements of Construction Teams ..... 32
    - 4.3.3 Requirements of Commissioning Teams ..... 33
  - 4.4 Zone-Based Modeling vs. Space-Based Modeling ..... 33
    - 4.4.1 Thermal Zones ..... 33



4.4.2	Zone-Based Modeling .....	34
4.4.3	Space-Based Modeling.....	35
4.5	BIM Data Exchange with Energy Models .....	35
4.5.1	Geometric Data .....	35
4.5.1.1	Benefits .....	35
4.5.1.2	Limitations.....	36
4.5.1.3	Recommended Future Developments.....	38
4.5.2	Construction / Material Data.....	38
4.5.2.1	Benefits .....	38
4.5.2.2	Limitations.....	38
4.5.2.3	Recommended Future Developments.....	39
4.5.3	Mechanical Data.....	39
4.5.3.1	HVAC Equipment .....	39
4.5.3.2	Lighting, Occupant, and Equipment Loads .....	40
4.5.3.3	Spatial Data.....	41
4.6	BIM Building Elements and Spaces.....	42
4.6.1	Building Elements for Design.....	42
4.6.1.1	Walls .....	43
4.6.1.2	Slabs / Floors .....	46
4.6.1.3	Roofs / Ceilings .....	47
4.6.1.4	Columns .....	47
4.6.1.5	Shading Devices .....	47
4.6.2	Spaces / Rooms / Zones .....	48
4.6.2.1	Required Spatial Information for Spatial Validation .....	48
4.6.2.2	Unoccupied or “Cavity” spaces.....	49
4.6.2.3	Space Height and Plenums .....	49
4.6.2.4	Room Separation Lines.....	49
4.6.2.5	Space Boundaries .....	50
4.6.2.6	Updating Space Boundaries .....	52
4.6.2.7	Zones .....	52
4.7	Model Checker Development .....	53
4.7.1	Proposed Model Checker Capabilities .....	53
4.7.1.1	Space Definition .....	53
4.7.1.2	Spatial Data.....	54
4.7.1.3	Thermal / HVAC Zones.....	54
4.7.1.4	Space Loads Based on Object Types .....	54
4.7.1.5	HVAC Equipment Object Types .....	54
4.7.1.6	Construction Object Types .....	54
4.7.1.7	Adiabatic vs. Non-Adiabatic Adjacencies .....	55
4.7.1.8	Code Compliance .....	55
5	Energy Modeling Case Studies .....	57
5.1	Wayne Aspinall Federal Building.....	57



5.2 Edith Green-Wendell Wyatt Federal Building.....60

5.3 Peter W. Rodino Federal Building .....63

Conclusion.....69

Acknowledgements .....70



## Foreword

The United States General Services Administration (GSA), through its Public Buildings Service (PBS), provides and maintains quality workplaces for over a million federal associates in approximately 9,600 owned or leased buildings across the United States.<sup>1</sup> In Fiscal Year 2014 (FY 2014), GSA properties consumed 16.9 trillion British Thermal Units (BTUs) of energy at a cost of \$364.5 million. As a building owner and manager, GSA is committed to maximizing efficiency and energy performance without sacrificing occupant comfort and productivity, and GSA is committed to using its government-wide influence to reduce the environmental impact of the Federal Government.

Executive Orders (EO), legislations, and Memorandums of Understanding (MOUs) have all helped define the sustainability goals that federal agencies must meet each year.

- The Energy Policy Act of 2005 (EPAct 2005) requires that new federal buildings be designed to use 30 percent less energy than they would by complying with the American Society of Heating, Refrigerating, and Air-Conditioning Engineers (ASHRAE) Standard 90.1 and that the Federal Government's renewable electricity consumption be at least 7.5 percent in FY 2013 and thereafter.
- EO 13423 set many requirements for federal energy and environmental management, including requirements for the entire GSA portfolio to reduce facility energy use per square foot (energy use intensity) by 3 percent each year, leading to 30 percent by the end of FY 2015, relative to an FY 2003 baseline.
- The Energy Independence and Security Act of 2007 (EISA 2007) requires new GSA buildings and major renovations to reduce fossil-fuel-generated energy consumption by 100 percent by 2030.
- EO 13514 established a government-wide focus on sustainability, energy efficiency, and the environment. It requires each agency to designate a Senior Sustainability Officer who must set targets for agency-wide greenhouse gas (GHG) emissions reductions in 2020.

To meet these goals, GSA is using building information modeling (BIM) for energy modeling to strengthen the reliability, consistency, and usability of predicted energy use and energy cost results. Specific benefits to a project team using BIM-related energy and operation tools may include: more complete and accurate energy estimates earlier in the design process, improved life-cycle costing analysis, increased opportunities for measurement and verification during building occupation, and improved processes to achieve high performance buildings.



## Section 1 Introduction

GSA BIM Guide 05

[www.gsa.gov/bim](http://www.gsa.gov/bim)





## 1 Introduction

GSA's mission is to "deliver the best value in real estate, acquisition, and technology services to government and the American people."<sup>ii</sup> Within GSA, PBS manages over 354 million square feet of workspace<sup>iii</sup> for the civilian Federal Government and uses 17 trillion BTUs of energy on an annual basis to keep these workspaces functioning.

GSA BIM Guide 05 - Energy Performance encourages GSA project teams to use BIM-based energy modeling, defined as using BIM technologies when doing traditional energy modeling. It does not currently discuss using energy modeling tools that are built into BIM applications, nor does it require the use of specific software applications.

The guide aims to help GSA project teams in the planning and development of their BIM execution plans (BEPs). It promotes efficiencies by using BIM technologies during all phases of a building's lifecycle: project planning, design, construction, commissioning, and operation. It highlights opportunities and provides guidance for improving energy and thermal performance through the use of BIM-based energy modeling. It aims to increase the usability and accessibility of such technologies for GSA project teams and to improve the accuracy and consistency of energy use estimates and the efficiency of actual building performance through the implementation of appropriate BIM-related technologies. It provides a framework for integrating building energy data with building models in a central facilities repository (CFR).

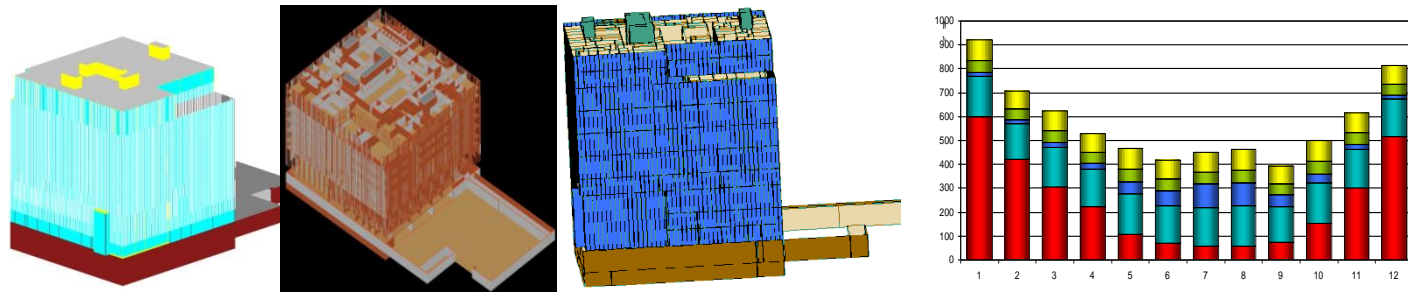


Figure 1. Energy Modeling from GSA Pilot Project

This Guide is divided into four main sections:

- Section 2 Why Energy Modeling: This section discusses the motivation for employing energy modeling and the role of energy modeling during the design, construction, commissioning, and operations phases of a building or portion of a building.
- Section 3 Choosing Energy Modeling: This section details the factors that a project team must evaluate when considering BIM-based energy modeling during the design, construction, commissioning, and operations of a building or portion of a building.



- Section 4 Energy Modeling and BIM: This section details the role BIM plays in the energy modeling process, and the issues that should be considered when conducting a BIM-based energy analysis.
  - Section 4.3 discusses GSA’s deliverable requirements and minimum standards, which are based on the “Design to Building Energy Analysis” Model View Definition (“Design to BEA” MVD) of the [US National BIM Standard v2 \(NBIMS-US\)](#).
- Section 5 Energy Modeling Case Studies: This section includes case studies that describe the building energy modeling process for different GSA projects and how BIM was leveraged to achieve the project goals.



## Section 2 Why Energy Modeling

GSA BIM Guide 05

[www.gsa.gov/bim](http://www.gsa.gov/bim)



## 2 Why Energy Modeling

### 2.1 Overview

The motivation behind the desire to accurately predict the energy loads - including the heating, cooling, lighting, process, specialty, and plug loads - of a proposed design and the energy required to meet those loads is to efficiently provide the required indoor conditions for building occupants and equipment; to optimize the building materials, system performance, and balance; and to compare design options based on lifecycle costs.

Energy performance in buildings is the result of a complex set of interrelationships among the external environment, the shape and character of the building components, equipment loads, lighting systems, mechanical systems, building envelope, air distribution strategies, renewable energy options, operational protocols, and the building occupants. Building optimization - achieving the greatest possible energy efficiency and environmental soundness with the least expenditure of resources - requires an understanding of these interrelationships.

Energy modeling, or energy simulation, is a powerful, computerized method for studying energy performance of buildings and for evaluating architectural and mechanical designs. It allows the design team to evaluate the thermal impacts of various design options that are being considered, and to develop an effective building form and design strategies. It can help investigate complicated design problems and quantify and evaluate the energy performance of architectural and mechanical designs using computer models. It calculates building thermal loads and energy consumption to determine the energy characteristics of the building and systems and the peak design loads for equipment and plant sizing. Load calculations must properly address diversities within the building thermal loads (based on maximum simultaneous system loads due to operating schedules) to avoid oversizing of equipment, which decreases efficiency.

Energy modeling also allows the operations team to evaluate actual building performance and diagnose improperly functioning building systems. It estimates energy requirements for the facility from a baseline model, and the results provide information on building energy consumption, utility costs, indoor environmental conditions, and thermal comfort. The energy modeling process can reveal synergies, trade-offs, cascading effects, and other interrelationships that could otherwise not be recognized and managed effectively using non-computerized methods.

The following subsections discuss common uses and different purposes of energy modeling during different phases of a project. See sections 3 and 4 for best practices and guidance on implementation.

## 2.2 Preliminary Concept Design

The use of energy modeling during the preliminary concept design phase can provide the design team with valuable information to inform design decisions. The team can create a rough energy model with simplified thermal zoning to evaluate the impacts of site location, building massing, envelope choices, building orientation, and alternative energy sources.

For example, the team can use energy modeling to compare architectural schemes with different building orientations, which may have large variability in solar load and energy consumption, but cannot be easily revised after the concept phase. While keeping the internal loads the same for all schemes, the team can compare the geometry and envelope changes among the preliminary design concepts. Information from rough energy models, while not accurate enough in absolute terms at this stage for cost analysis, does help to grade the performance of one design alternative relative to another. This type of order-of-magnitude feedback can help the design team to eliminate extremely inefficient design options early on in the design process.

The project team can use energy modeling tools within BIM applications to define assumptions for internal loads, schedules, and systems for early conceptual models. This can help the team to identify qualitative benefits of architectural options, though it cannot quantify them accurately in terms of energy usage and cost without refining the mechanical, electrical, and plumbing (MEP) systems using more robust tools and modeling. Modeling at this stage may inform some detailed design decisions, but project teams need to evaluate the validity of the assumptions. At a minimum, those assumptions should align with the requirements of Appendix A.6 of the [Facilities Standards for the Public Buildings Service \(P100\)](#) for GSA projects, as well as other industry standards where applicable.

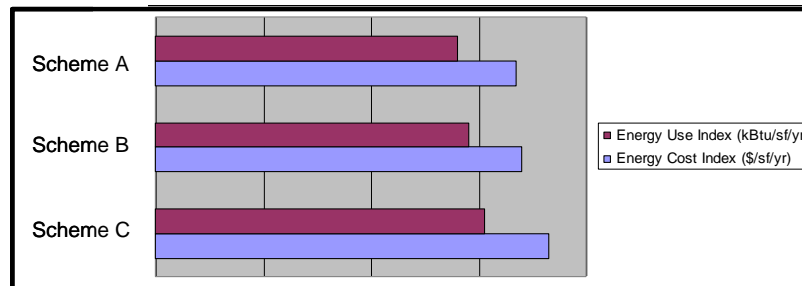


Figure 2. Example of Preliminary Conceptual Design Modeling Results on a Federal Courthouse Project

## 2.3 Final Concept Design

During final concept design, energy modeling allows the design team to evaluate various design alternatives on a more detailed level than is possible during preliminary concept design. After site location, orientation, and other basic design decisions have



been made, there are frequently multiple building design concepts involving various layouts, heating, ventilating, and air conditioning (HVAC) systems, fuel types, construction types, and basic architectural features under consideration. Comparing the relative energy performance of these various designs and determining the impact of the various system or component variations allows the design team to more effectively and efficiently determine which of the proposed concept designs is best suited to meet the project’s program, performance goals (such as the targeted Leadership in Energy & Environmental Design, or LEED, rating), and budget. Figure 3 shows three proposed design alternatives for a GSA Land Port of Entry (LPOE) Station and their respective energy modeling results.

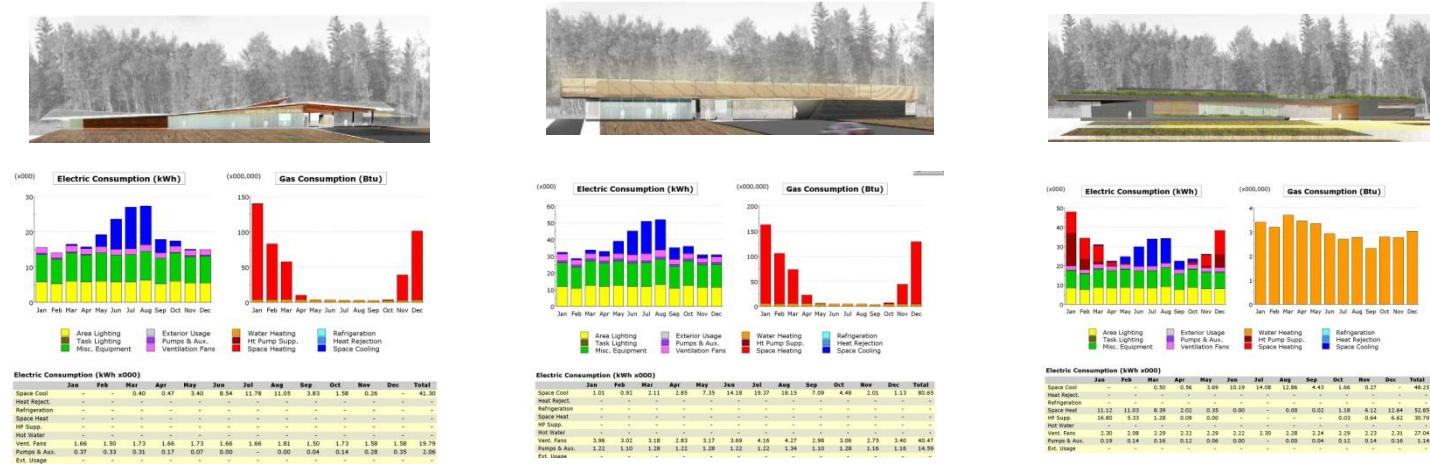
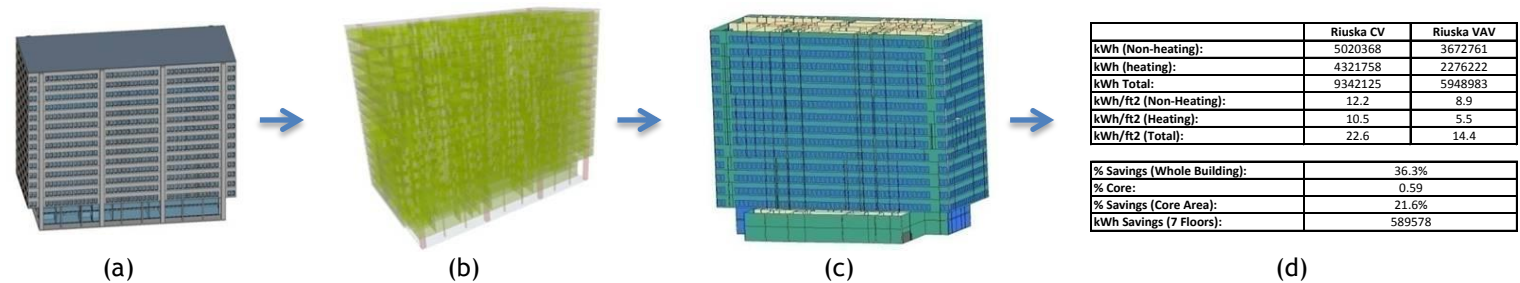


Figure 3. Using Energy Modeling to Evaluate Three Alternative Designs for an LPOE Station<sup>iv</sup>

## 2.4 Design Development

During design development, energy modeling allows the design team to conduct parametric analyses on the selected design. Parametric analyses helps to determine the relative impact of design modification to various building systems and sub-systems, such as changing window types, insulation values, HVAC system configuration, and control strategies. By determining the relative impact of modifying these parameters, the team can select the most desirable design option. For example, a design team may want to add additional thermal protection to the building facade and is evaluating two possible measures. The team can either add an additional layer of rigid board insulation to the exterior facade, or they can install spectrally selective low-e coatings to the windows to the south and west facades. An energy simulation can quantify the relative impact of these alternatives, and the team can analyze the savings results relative to costs. The results may show that the improved windows will result in the shortest simple payback (Total cost/Annual Cost Savings). Similarly, GSA recently conducted a BIM-based energy

analysis to determine the potential energy and cost savings of retrofitting several floors of an office building with variable air volume (VAV) HVAC systems rather than constant volume (CV) systems (Figure 4). Such analysis can inform GSA's retrofit funding allocation decisions.



**Figure 4. A BIM-Based Energy Analysis Starting with (a) a BIM Model (b) Exported to a Model Checker (c) Exported to an Energy Simulation Program Provided the GSA with (d) Valuable Information on a Potential HVAC Retrofit.**

Elimination parametrics is another diagnostic technique that may help to determine the relative impacts of various design alternatives. With elimination parametrics, the team runs a series of simulations, and one component of energy use is set to zero within each simulation. This allows the design team to clearly determine the relative value of each component to the energy performance of a particular building and prioritize opportunities for energy efficiency.<sup>v</sup> The team can also apply this technique to test the relative impact of a specification for individual building components or “value engineering.”

At the end of the design development phase, the project team should have a clear definition of the energy-related components of the building required to meet the project's performance goals and budget.

## 2.5 Construction Documents

During the construction documents phase, energy modeling helps to further evaluate remaining design decisions related to the overall energy performance and to ensure that the design meets all relevant mechanical or energy codes. During this phase, the project team can fine-tune energy models with information from the specified basis of design products. Final simulations provide the required documentation for any sustainable building certification, such as LEED, that the project may be pursuing, and to create a baseline for expected building performance for commissioning, recommissioning, and continuous commissioning.



## 2.6 Construction

Energy modeling is rarely conducted during the construction phase. Nonetheless, energy modeling can play a significant role by helping the project team to evaluate how proposed or actual change orders for materials or equipment could impact the building's energy performance.

## 2.7 Commissioning

Similarly, energy modeling is rarely used during building commissioning. However, the energy model can be a useful reference during the commissioning process. Typically, commissioning is accomplished with the use of a variety of diagnostic tools, including tools that allow for the process of detecting incorrect operation and diagnosing the cause of the problem<sup>vi</sup>, with no integration with energy modeling programs. This is primarily due to the fact that most energy modeling programs are developed for design, not for building operation. They lack the functional user interface to integrate data from a building automation system (BAS) into the modeling program. Additionally, there is a lack of integration between a building's BAS and diagnostic tools, resulting in underutilized BAS data.<sup>vii</sup>

There are three primary methodologies of integrating energy simulations into the commissioning process. The most common is the calibration of whole building energy models (BEMs). The second method, component-based fault detection/simulation, may require energy simulation tools that perform time steps much smaller than one hour. In the third method, the energy simulation runs in real time and is connected to the BAS, which can provide current weather data as input to the simulation and sub-metered consumption data for comparison with the simulation output. In a proof-of-concept demonstration, EnergyPlus was connected to the BAS in two buildings at Naval Station Great Lakes and was used to detect operational problems.<sup>viii ix</sup> Use of energy modeling during commissioning can help the building staff validate or adjust the design baseline energy performance.

Fundamentally, the objective in new building commissioning for energy performance is to determine how the actual performance compares to the basis of design. However, the difficulty of calibrating simulated data to new construction stems from the lack of historical performance data.

## 2.8 Operations

While many opportunities for reduced environmental impact can be realized during design and construction, building operations holds the highest potential for efficiencies resulting from shared information and interoperability. For the purposes of this guide, the term "operations" is intended to include retro-commissioning, continuous commissioning, retrofits, changes in occupancy, changes in functionality, and all major electrical or mechanical modernizations.

During building operations, energy modeling helps to evaluate actual building performance and diagnose improperly functioning building systems. This level of analysis requires metering and monitoring through the BAS and calibrating the energy model to this data. It is advantageous to have multiple sub-meters instead of one master meter because it allows easier monitoring in



sections and narrows the potential areas of recalibration. Sub-metering can be organized in different ways - per floor, HVAC zone, tenant, etc. The sub-metering scheme will depend on the building and project needs. The project team should identify the sub-metering scheme during the design phase, and the scheme should be accurately reflected in building operation. It is important that the sub-metering schemes are identical in the BIM model and the building.

Calibration of energy models is applicable to retrofit analysis and to continuous performance assessment in cases where the basis of design is no longer applicable and the objective is to determine if the performance of the building has degraded from the condition it was in when the calibration data was collected. The calibration process compares the results of the simulation with measured data and tunes the simulation until its results closely match the measured data. Measured data may be obtained from utility billing data (typically monthly), utility interval metered data and sub-metered data, data from a BAS, and data from installed data loggers. The challenge is effectively integrating the collected data into the energy model. As user interfaces for energy modeling programs become more advanced, this barrier will be alleviated.

It may be difficult to identify problematic building systems in an existing building - equipment and controls have had time to degrade; the building operations manager may not be well versed on how the building was originally intended to operate. These situations present the greatest opportunity to benefit from retro-commissioning and continuous commissioning.

The use of energy modeling for retrofit analysis is very common. Engineers start with baseline models that reflect the current operating conditions of a facility. Though calibration of these baseline models using utility billing data is common, calibration of an energy model with any other type of metered data has been too inefficient for retrofit analysis procedures. Frequently, there are only a few systems or subsystems that the modeler wants to establish a baseline for, and those systems may only be affected by a few building parameters, preventing the need to accurately model the entire building. In this situation, calibrating the model to utility billing data is more challenging since the billing data is typically reported at the facility level, and the particular contribution of just a few systems to the entire consumption data set is difficult to determine. Nonetheless, energy modeling is a useful and effective tool when conducting a retrofit analysis. Once the baseline is determined, the modeler may evaluate how various energy efficiency measures (EEMs) impact electricity and gas consumption and determine the annual cost savings and the resulting payback period.



## Section 3 Choosing Energy Modeling

GSA BIM Guide 05

[www.gsa.gov/bim](http://www.gsa.gov/bim)



## 3 Choosing Energy Modeling

### 3.1 Overview

This section is intended for GSA associates to evaluate the use of BIM-based energy modeling during the design, construction, commissioning, and operational phases of their projects.

- Section 3.2 outlines a recommended process for deciding when and how to use energy modeling on a project;
- Section 3.3 summarizes how BIM-based energy modeling differs from traditional energy modeling;
- Section 3.4 highlights opportunities for using BIM-based energy modeling to improve energy efficiency; and
- Section 3.5 explains how to determine the feasibility of implementing BIM-based energy modeling into a project.

### 3.2 Decision Process

The project team should discuss when and how to use energy modeling when developing the project management plan or as early as possible during the project. As Figure 5 illustrates, the earlier the team considers issues regarding building performance, the bigger the possible gains, and the lower the cost to achieve these gains.

The recommended process for deciding when and how to use energy modeling in a project includes the following steps:

- Identify the stakeholders and their energy goals
- Define the business needs and energy considerations of the project
- Identify the opportunities where energy performance information can help guide the project
- Identify the project team's capabilities and resources, including time, budget, and skill for using energy modeling effectively
- Identify the energy modeling tools that will generate useful information for the team

The team should consider the questions in an iterative, cooperative manner in order to plan the most effective implementation. Answering these questions will help the team to define an appropriate scope for energy modeling. If the project team decides to use energy modeling, the team should update the BIM execution plan (BEP) to include the energy modeling scope and implementation plan and to align it with the overall energy goals. Section 3.5 approaches these same questions specifically for evaluating the feasibility of incorporating BIM-based energy modeling into projects.

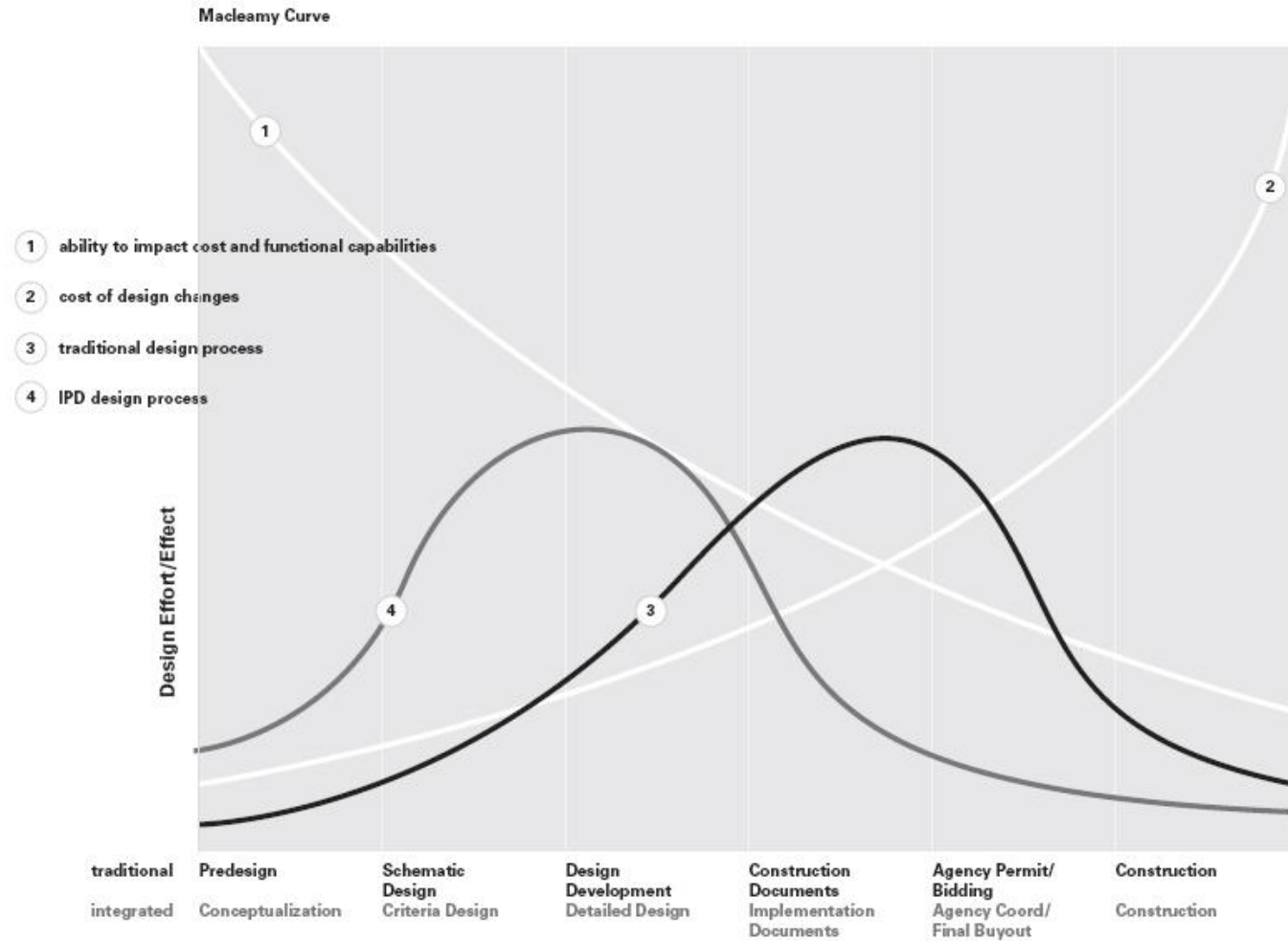


Figure 5. The “MacLeamy Curve”<sup>xx</sup> Demonstrates the Value of an Integrated Design Process and the Evaluation of Building Performance During Early Design.

Note: The goals for energy modeling must be established during the pre-design phase so that the project team takes into consideration energy modeling requirements when creating the BIMs. This is true whether or not the energy modeling will be

BIM-based because the decision to choose traditional or BIM-based energy modeling may come after the BIMs have been created. If the project team ultimately selects BIM-based energy modeling, the efficiency of the analysis will depend on how the BIMs were created.

### 3.3 Traditional Energy Modeling vs. BIM-Based Energy Modeling

To understand the benefits of BIM-based energy modeling, one must first understand how it differs from traditional energy modeling.

In this guide, “traditional energy modeling” refers to a process in which an energy modeler manually creates a model using design documentations such as drawings, specification, and photos. This model can be used as input for the energy simulation. It includes all the parameters required for the analysis, such as the geometry of the design, the equipment systems, the operating systems, and the various building loads. In order to create the model, the modeler uses a graphical user interface or a text editor and relies on his or her understanding of the design documentation, which may not always be consistent with the intended design philosophy. In addition, the modeler will almost always have to simplify some or all of the design information in order to make the input file manageable. This process limits the accuracy of the model to the skill of the energy modeler, and it can lead to serious inconsistencies in the model, particularly if more than one modeler works on the model. Design changes can lead to additional inconsistencies if the energy modeler revises the energy model in an effort separate from the revisions to the design documentation. All these factors result in a very time consuming process for architects and engineers, as well as numerous opportunities for human error and for approximation to skew the accuracy of the modeling and analysis.

In contrast, BIM-based energy modeling uses the design BIM to create the input file for the energy modeling software, using standardized data structures for information exchange (see section 4.2). The information about the architectural design and the mechanical loads, properties, and systems that are generated by the design team and used in the design BIMs can be transferred to the energy modeling program. GSA project teams can leverage the required spatial program BIM (see [GSA BIM Guide 02](#)) to create and improve the accuracy of the spaces and zones in the energy model. Furthermore, GSA can continue using these same spaces and zones throughout the operations of the facility as a basis for calibrating the predictive energy model with the actual building energy performance. Also, by using BIM, the process of creating an energy model has the potential to become automated and formulaic, so that, at the very least, the geometry and other assumptions specified in the architectural model remain consistent across users and are not subject to interpretation or improper simplification. However, a process must be adopted that ensures accuracy of the information transfer to the energy model using BIM, or the problems associated with traditional energy modeling described above may still occur and may even be exacerbated. BIM-based energy modeling is discussed in more detail in Section 4.

### 3.4 Energy Efficiency and BIM-Based Energy Modeling

In new construction, major renovation and modernization, and building operations, one area of major concern for GSA and the building industry is energy efficiency and building performance. The following table shows some opportunities to use BIM-based energy modeling during design to promote energy efficiency.

**Table 1. BIM-Based Energy Modeling Opportunities by Project Type**

Project Type	Project Challenge	Goal	Metrics for Success
<b>New Construction and Major Renovation</b>	Consistent and accurate analysis and prediction of building performance throughout the building life-cycle	Consistent and accurate energy predictions that result in energy efficient designs based on life-cycle costing	Life-cycle cost and estimated annual energy consumption that meets or exceeds project goals; accuracy and consistency in energy models
<b>Renovation and Modernization</b>	Consistent and accurate modeling of as-built conditions; calibration of energy models	Consistent and accurate energy predictions that result in the identification of the most cost effective energy efficient retrofits	Life-cycle cost and estimated annual energy consumption that meets or exceeds project goals; accuracy and consistency in energy models
<b>Building Operations</b>	Continuous commissioning using real-time energy modeling to evaluate actual and future building performance	Develop an energy modeling feed-back loop which evaluates building performance in real-time	Optimized energy performance, meeting or exceeding design intent; accuracy and consistency in energy models

### 3.5 Feasibility of BIM-Based Energy Modeling

#### 3.5.1 Overview

Energy modeling is not a stand-alone process; it is intended to support integrated design - a process in which multiple disciplines and design elements occur iteratively and in partnership to allow for synergies between the various systems and components. Successful realization of this process requires coordination and collaboration among the owner; developer; architect; mechanical, electrical, and structural engineers; landscape architect; and any other relevant design team members throughout the entire design process. Integrated Project Delivery (IPD) allows design teams to make design decisions earlier in the project when the opportunity to influence positive outcomes is maximized and the cost of changes is minimized, as is shown in Figure 5.<sup>xi</sup> The decisions made at the earliest stage of the design process often have the most impact on the building performance in terms of energy and sustainability. As the GSA and building industry's concern for energy-efficient and

sustainable buildings grows, the need for building performance information and the adoption of the IPD process or an IPD-like process will likely increase to facilitate a greater degree of holistic performance assessment into the process.

The section discusses how project teams should evaluate the feasibility of incorporating BIM-based energy modeling into their projects. The factors to consider can be summarized as follows:

- Project goals and energy modeling scope
- Project budget and schedule
- Project resources
- Energy modeling technology

### 3.5.2 Project Goals and Energy Modeling Scope

Energy modeling is a complex activity, which requires a certain level of engineering experience and judgment to be successful. A high degree of variability exists between predicted and actual energy performance<sup>xii</sup> and among individual energy modeler's level of accuracy. If a project team has decided to use energy modeling, it is important to consider BIM-based energy modeling during early design. In GSA's case, early design encompasses the preliminary concept design and final concept design phases; for other project teams, early design may be identified as "Pre-Design," "Conceptual Design," and "Schematic Design." Building performance evaluation during early design considers the relative and, to a certain degree, absolute thermal performance of multiple design options to inform major project team decisions on geometry and passive design strategies.

The scope and the level of detail of energy modeling depend upon the project scope, project constraints, performance goals, and project phase. Below is a summary of common modeling detail and depth of analysis during various project phases.

**Table 2. Modeling Detail and Depth of Analysis**

Phase	Modeling Detail	Depth of Analysis
<b>Preliminary Concept Design</b>	Site location, building orientation, massing, and default assumptions	Quickly assess large-scale impacts of design alternatives
<b>Final Concept Design</b>	Building geometry, preliminary layout, construction, mechanical equipment, and intermediate assumptions	Evaluate and compare proposed design schemes, intermediate analysis, preliminary code compliance
<b>Design Development</b>	Building geometry, detailed layout, detailed construction and envelope design, mechanical equipment, building controls, and detailed assumptions	Estimate final design energy performance, detailed analysis, preliminary code compliance

Phase	Modeling Detail	Depth of Analysis
Construction Documents	Detailed model	Finalize estimated energy performance and code compliance
Construction	Detailed model	Assess impact of change orders and construction detailing. Confirm installed systems meet contracted performance requirements
Commissioning	Detailed model	Confirm installed systems meet contracted performance requirements
Operations	Detailed model	Evaluate actual building energy performance, including HVAC control systems

In support of integrated design, the energy model should be included throughout the design process - from more simplistic energy modeling during the early design stages to more detailed design analysis during later stages of design and construction. While simplistic energy modeling is typically not accurate enough for detailed design and cost analysis, it can be useful in rapidly screening high-level concepts, particularly from an architectural standpoint. Project teams need to exercise caution and manage their expectations when interpreting the results of simplistic energy models to avoid using overly simplified or even inaccurate information in the design process.

In the concept design phase, each project team should create a shared “Basis of Modeling” document that clearly outlines the scope of the energy modeling activities to meet the project’s goals and that summarizes all the relevant energy modeling inputs, assumptions, and results. The purpose of a “Basis of Modeling” document is to make the energy modeling process more transparent for all stakeholders by providing greater visibility into the energy modeling process and the performance data for all team members. It helps to ensure that inputs are properly coordinated and can be verified by parties without access to the particular energy modeling software, inputs, or results files. For example, the energy modeler may define requirements for proper transfer of information from the architectural BIM to the analysis software, such as geometric definition, closure of spaces, and spatial information; the architect may define the requirements for output from energy modeling, which would be useful in confirming design decisions and ensuring that “moving targets” are modeled appropriately.

“The Basis of Modeling” is a coordination tool and a supplement to the project’s BEP, though project teams may choose to include the information as part of the BEP. It should reference specific BIM Levels of Detail (LOD 100-500, for example) and the BEP as appropriate, and it should contain information on the following items when applicable to the project:

- Energy modeling team members and their roles (who will perform energy modeling, who will provide required inputs for energy modeling, when the information transfers need to occur, etc.)
- Energy modeling scope (stakeholders, tools, workflow, etc.)
- Project data (building codes, weather, utility rates, etc.)
- Building geometry





- Construction materials
- Space use type and scheduling
- Base and process loads
- On-site generation
- Mechanical systems
- Cooling and heating plants
- Utility rates
- Documentation of results

The scope of BIM-based energy modeling is unique for every building project, and a number of factors should be considered when developing the “Basis of Modeling” document.

Among these considerations are the size and relative complexity of the project, the specific building geometry, and the type and complexity of the building systems. More energy-modeling efficiencies may be gained with BIM in larger projects with complex geometries and many different space types. For example, in smaller projects it can be more efficient to make adjustments to the building design in the energy model directly, rather than using a workflow involving an export from a BIM-authoring application to a simulation tool. This type of implementation requires close coordination between the energy modeling team and the design architects and engineers (A/E). In small, complex projects, manual adjustments to building geometry also allows the energy modeler to gain greater insight into the zoning and construction of the building, which may facilitate easier coordination of the building systems and development of baseline models.

Another factor to consider is the selection of the energy modeling analysis tool. The selected analysis tool (which may be a function of system type and not building type, size, or complexity) may also impact the workflow. For example, some building analysis applications have the capability to apply templates to certain building features within the model, making change management of those features faster in the analysis tool and not the BIM. If an analysis tool is used that does not have this type of functionality, it may be faster to import changes from the BIM. Building design teams should be aware that a significant portion of energy modeling activities are not directly related to the geometric properties of the BIM and involve definition of systems, cooling and heating plants, customized operating schedules, utility rates, building reference data or baseline models, and analysis and quality-assurance of the energy model results. See section 3.5.5 for more information on energy modeling technology.

Design BIMs have typically not been authored to contain the types of information in the appropriate format and to the level of detail required to effectively execute early design Building Energy Analysis (BEA). The project team employing BIM must acknowledge and account for this information requirement then develop and execute processes needed to generate and exchange the information between the design BIM authoring team members and BEA team members. This should include validating the design BIM prior to exporting information to the energy model. If information standards are developed to support BIM-based BEA design processes, and these standards are implemented within BIM applications, then design teams can utilize the BIM tools to semi-automate the required information exchanges.

The project team should plan for creating BIMs that meet the data requirements outlined in the “Design to BEA” MVD and documenting results such that building operations teams can utilize and maintain the information.

When properly used with building performance analysis tools, BIM has the potential to enable completely different design mentalities and strategies, creating a completely new design process that expands a design team's capabilities and allows for information typically considered during later design to be used upstream during earlier design stages. However, this increases the amount of information and time required during the early design phases, as shown in Figure 5, and it allows decisions to be made when they have the greatest potential to positively impact the project.

### 3.5.3 Project Budget and Schedule

Regardless of when the project team decides to employ BIM-based energy modeling, the team will always need to consider constraints such as the project budget and the project schedule.

With increased attention to the sustainable design of buildings, more and more design teams are enhancing their in-house energy modeling expertise and/or working more with consultants to meet their clients' modeling demands. This phenomenon, in conjunction with the continued development and improved usability of energy modeling programs, has resulted in a decrease in energy modeling costs in recent years. With more firms in the market to provide these services, competition has made it possible to secure more cost-effective services.

GSA's primary driver for energy modeling is the PBS P100 requirement for load and energy calculations. Given GSA's requirements for LEED Certification, A/Es will typically also choose to utilize energy modeling during design to optimize the project's LEED rating. If the design team suggests that energy modeling will only be conducted in the late design stages to meet LEED requirements, the GSA project manager should recommend strategic energy modeling starting during preliminary concept design. Energy modeling that starts during the design development or construction document phases typically has less impact than modeling started earlier in the design process.

### 3.5.4 Project Resources

After the core project team has defined the specific goals for energy modeling, it can assemble the proper energy modeling expertise, software programs, and information exchange protocols to meet those goals. Depending on the building and systems involved, energy modeling requires varying levels of technical expertise and experience. The project team may need support from building energy modeling professionals or advanced technical support from a software vendor to correctly perform advanced energy simulations, particularly when the building systems and software applications involved are newer to the industry. The team should work with the GSA National BIM Program Expert, the regional energy engineer, and the GSA BIM community to confirm the level of support required and available early in the energy modeling process. It can use certifying organizations as resources for evaluating building energy modeling professionals (examples listed below).

- ASHRAE's [Building Energy Modeling Professional \(BEMP\) Certification](#)
- Association of Energy Engineers' (AEE) [Building Energy Simulation Analyst \(BESA™\) professional certification](#)

### 3.5.5 Energy Modeling Technology

Selecting the most appropriate energy modeling tool to fulfill the project team's needs is a crucial step in the energy modeling process. While the software application that best suits a project's goals will vary from project to project, it is important for GSA project teams to prioritize interoperability with the Industry Foundation Classes (IFC) schema and green building XML (gbXML). Selecting an energy modeling tool in haste could have budget and schedule consequences for the project. In particular, thorough analysis of building systems involving alternative or renewable energy typically involves specialty software that is potentially fragmented from the whole BEM. Though software capabilities are increasing rapidly, the project team may find that a particular project proposal or desired analysis is simply not well supported by a given tool's functionality and/or the technical support capabilities of the software vendor. However, there are valuable and cost effective modeling tools available to meet most modeling needs of GSA project teams.

Energy modeling tools typically consist of a graphical user interface (GUI) and a thermal calculation engine. The tool requires the user to provide inputs that describe the building geometry and layout (including thermal zoning, which is discussed later), construction, operating schedules, equipment loads (lighting, equipment, etc.), HVAC systems, local weather data, and utility rates (Figure 6). It performs an annual hourly simulation (minimum 8760 hours per year), first calculating the building loads and then calculating the system capacities required to meet those loads.

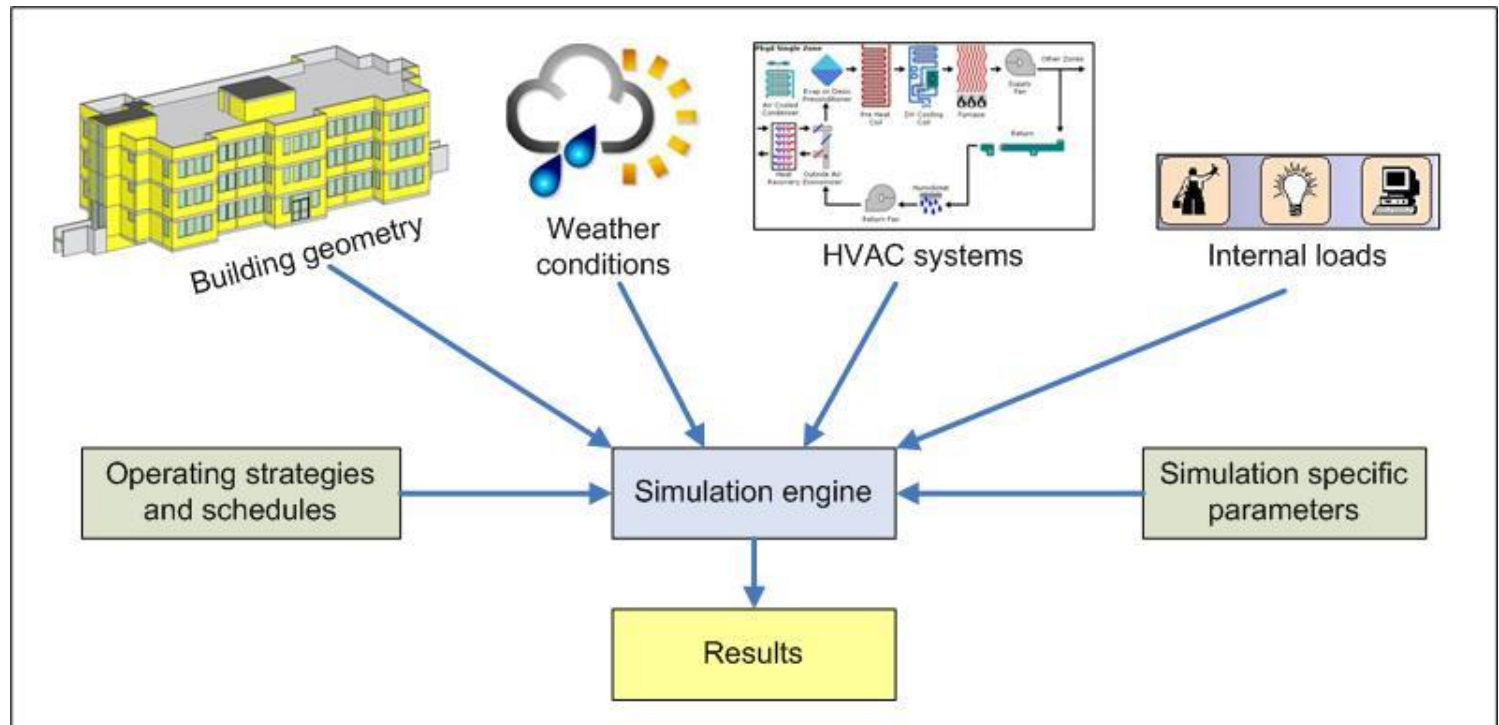


Figure 6. General Data Flow of Simulation Engines<sup>xiii</sup>

The thermal calculation engine is based on thermodynamic equations, principles, and assumptions that attempt to simulate the actual thermal processes occurring in a building. The general data flow principle between the simulation engine and the GUI is illustrated in Figure 7. The simulation engine uses an input file (or files) of a defined format that contains a representation of the previously described input. Based on this input, the engine performs a simulation and writes its output in one or more output files. While the output files contain results from the simulation, they also contain information about the simulation run itself, such as warning messages or additional information needed to evaluate the input. GUIs usually wrap around this process and make it easier to input data, to initiate the simulation engine, and to understand the output using graphical illustrations.

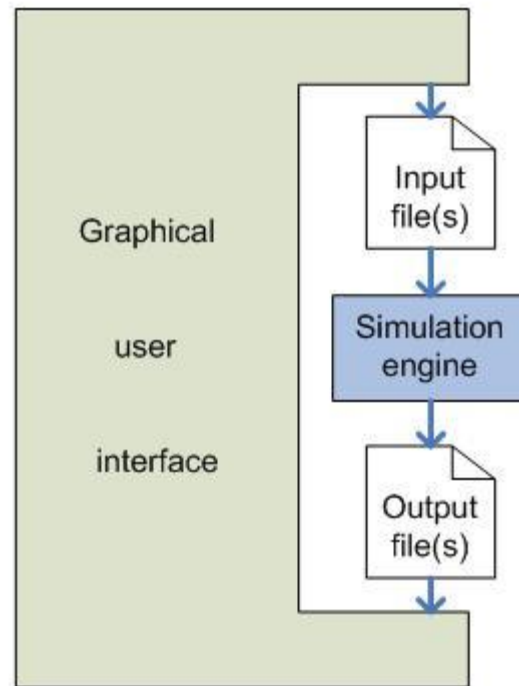


Figure 7. General Architecture of Energy Simulation Tools<sup>xiv</sup>

Several organizations publish lists of energy modeling software. Some of them are provided here:

- The U.S. Department of Energy's [Building Energy Software Tools Directory](#)
- [The AIA Energy Modeling Practice Guide](#) from the American Institute of Architects
- [Energy Analysis Software Evaluation](#) from Stanford University

GSA associates are encouraged to contact their [Regional BIM Champions](#) and the National BIM Program Expert to discuss specific software selection.



## Section 4 Energy Modeling and BIM

GSA BIM Guide 05

[www.gsa.gov/bim](http://www.gsa.gov/bim)



## 4 Energy Modeling and BIM

### 4.1 Leveraging BIM Data for Energy Modeling

The advantage of BIM-based energy modeling over the traditional approach is that the model does not always have to be manually recreated or modified, which tends to be time-consuming and labor-intensive. Instead, a BIM-based energy model's geometry can be generated directly from pre-existing BIM files. In addition, using existing and augmented databases, input assumptions can be readily assigned (and re-assigned) to the spaces themselves. This allows for potentially greater specificity, accuracy, and granularity of inputs, which ultimately are more representative of actual building occupation. Thermal zone assignments can be made automatically in BIM-based energy modeling to allow the user to more closely match the thermal zones for energy modeling to the mechanically designed HVAC zones, rather than using theoretical thermal zones typically created by the energy modeler for simplification and time-saving purposes. Finally, the BIM-based process should be repeatable and transparent, minimizing the type of modeling variations encountered in practice today.

It is important to note that the BIM-based process currently involves emerging products and technologies, and there are limitations in the process of transferring information from BIM to energy modeling programs. The primary limitation is that many BIM-authoring applications do not support many of the information exchange requirements for energy modeling that could be contained within the model. Some examples include occupant, lighting, and HVAC schedules; thermal zoning capabilities; as well as other operational characteristics. In addition, the current export of building information from BIM authoring tools to data models such as IFC and XML is imperfect and does not always provide a reliable source of geometric data, but rather must be manually checked and modified. Another important limitation is that energy modeling software is not capable of representing architectural details, therefore architectural BIM models must be kept simple or be simplified before generating geometric information that is useful to the energy model. This lessens the accuracy of the geometry in the energy model.

Project teams need to consider how to coordinate changes in the energy model and the design BIM to ensure the models remain consistent. Project teams should include the coordination process in their BIM execution plans (BEPs).

Software developments are underway to improve the interoperability capabilities of various software tools. The GSA has collaborated with the Open Geospatial Consortium (OGC) Architecture, Engineering, Construction, Owner, and Operator (AECOO) Testbed to develop the "Design to BEA" MVD that has been adopted by the National Institute for Building Sciences (NIBS) and included in NBIMS-US. GSA requires the use of this MVD in energy modeling projects.

### 4.2 Data Schemas for Building Information Exchange

In simple terms, information exchange is the transmission of data among entities according to a recognized standard. Building information exchange is used specifically for building-related data. GSA uses building information exchange that conforms to NBIMS-US.

A data schema is the database structure that defines the objects in the database. A data schema for building information exchange therefore specifies the database structure for importing and exporting building-related data between building life-cycle software applications.

Discipline or process specific views are specified through MVDs. Essentially, MVDs filter BIM data to provide users easy access to the most relevant data. Most BIM-authoring application vendors are currently compliant with the [Coordination View](#), with partial implementations towards other MVDs.

#### 4.2.1 IFC

GSA requires BIM deliverables in both the native file formats and the Industry Foundation Classes (IFC) schema. The IFC specification is

“... a neutral data format to describe, exchange and share information typically used within the building and facility management industry sector. IFC is the international standard for openBIM and registered with the International Standardization Organization ISO as ISO16739.

The IFC specification is developed and maintained by buildingSMART International, bSI, (formally known as International Alliance for Interoperability, IAI). The official website to publish IFC and related specifications is [buildingsmart-tech.org](http://buildingsmart-tech.org). buildingSMART International also organizes the official IFC certification program, see [buildingsmart-tech.org/certification](http://buildingsmart-tech.org/certification).”<sup>xv</sup>

In other words, a BIM can be seen as an integrated database that describes a building or facility. IFC is an object-oriented data model used to describe the relationships and properties of building specific objects. It provides a framework for the exchange of information about building objects and processes between software applications. It includes definition of the object identities, data, relationships, and even processes for construction and operation of the building/facility. In a sense, it defines a language for sharing BIM information between the building disciplines.

“An IFC View Definition, or Model View Definition, MVD, defines a subset of the IFC schema, that is needed to satisfy one or many Exchange Requirements of the AEC industry. The method used and propagated by buildingSMART to define such Exchange Requirements is the Information Delivery Manual, IDM (also ISO29481).”<sup>xvi</sup>

Note that IFC is used for exchange of BIM information between applications. It is not intended to serve as an application data model and therefore does not define objects or data unique to an individual application. IFC is non-proprietary, and its development is open to input from anyone in the global AEC industry.

BIM-authoring tools and vendors with current IFC support (to varying degrees) are listed at <http://buildingsmart-tech.org/implementation/implementations>.



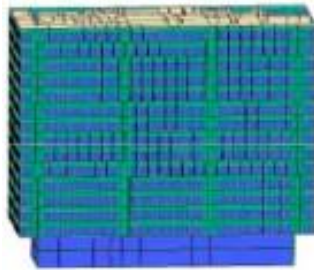


Figure 8. GSA Office Building, IFC imported by Riuska

#### 4.2.2 XML

The Extensible Markup Language (XML) is also a task and schema specification that provides standard ways to define information like what is contained in BIM. XML “is a simple text-based format for representing structured information.”<sup>xvii</sup> Several industry-specific, XML-based schemas are currently being developed for the AEC industry, including green building XML (gbXML), ifcXML, and aecXML. gbXML and ifcXML are the most relevant to building performance analysis, and gbXML is by far the most common.

Both IFC and XML create a common language for transferring BIM information between different BIM and energy modeling applications while maintaining the meaning of different pieces of information in the transfer. This reduces the need of modeling the same building in multiple applications. It also adds transparency to the process. A wide variety of data specific formats, which can be customized to process specific needs, are available to enable interoperability. However, more research is needed to establish how to apply these standards to conceptual building design for energy, thermal comfort, and daylighting.

##### 4.2.2.1 gbXML

The gbXML<sup>xviii</sup> schema allows for a detailed description of a single building or a set of buildings for the purposes of energy and resource analysis. It allows for data interoperability between sophisticated BIM applications and sophisticated building analysis programs such as DOE-2.2 and EnergyPlus. Its focus is the data exchange between three-dimensional (3D) computer-aided design (CAD) geometry and energy simulation tools, and it is the most widely supported data format for the exchange of building information between BIM/CAD and energy performance applications. BIM-authoring tools and vendors with gbXML support (to varying degrees) are listed at <http://www.gbxml.org/software.php>.

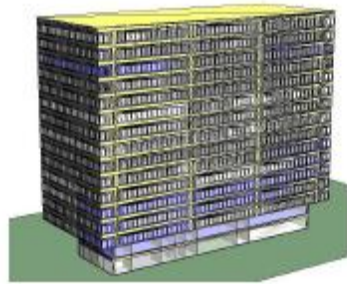


Figure 9. GSA Office Building Model, gbXML Imported by IES <VE>

#### 4.2.2.2 ifcXML

The ifcXML<sup>xix</sup> specification provides an XML schema specification that is a conversion of the EXPRESS (ISO 10303 part 1) representation of the IFC schema. A configuration file that controls the specifics of the translation process guides the mapping from EXPRESS to XML schema. This specification targets the XML community by providing guidelines on using and implementing the IFC standard using XML technologies.

### 4.2.3 Open Standard Building Analysis Tools

#### 4.2.3.1 Simergy

Simergy provides a comprehensive graphical user interface (GUI) that enables users to harness the capabilities of the EnergyPlus analysis engine. Simergy is a free tool developed through a public and private partnership. Simergy provides versatile workflow options allowing users to import geometry from BIM and other sources via IFC-Concept Design BIM and gbXML, and it takes on the challenge of BIM to BEM translation by integrating the Geometry Simplification Tool (GST) and the Space Boundary Tool (SBT) to enable more effective creation of the BEM. In addition, users can build geometry from imported floor plans or build their own geometry using Simergy's modeling tools, and they can also set up a number of Design Alternatives that are associated with the Simergy file. Within Simergy, the user can set up the HVAC system design by using the set of HVAC system templates - which provide the full definition of system types such as a Radiant System with Dedicated Outdoor Air System - or using the 'drag and drop' capabilities to build or adapt the system. Validation rule sets are incorporated into Simergy to assess the integrity of the model and to guide users in making necessary adjustments prior to running a simulation. Once a simulation or set of simulations has been run, a set of predefined reports (graphic and tabular) provides users a quick way to review the results for the current model and to compare it to others. For further analysis, users can utilize the Results Visualization capabilities that allows visualization of any of the EnergyPlus output variables in a number of ways for a single result set or multiple results sets.

## 4.3 Deliverable Requirements

This section outlines GSA’s energy analysis-related requirements for the design and construction teams. These requirements are in addition to all current deliverable requirements set forth in Appendix A of the latest version of the P100. A/Es are also encouraged to provide additional information above the minimum requirements.

1. The BIM deliverables must include files in the following formats:
  - a. A single BIM file in the latest IFC format.
  - b. BIM file(s) in the native format of the BIM-authoring application(s).
2. At a minimum, the IFC file submitted must meet the data requirements outlined in the “Design to BEA” MVD referenced in Chapter 4.4 of NBIMS-US.
  - a. Further information on import and export software capabilities and on available validation tools for the MVD can also be found in NBIMS-US Chapter 4.4.
3. The BIM data and deliverables must form the basis for the narrative energy report deliverable required by P100.

### 4.3.1 Requirements of Design Teams

This section outlines the actions the design teams should take to help make a project’s BIM(s) easily usable for energy performance analysis, commissioning, and recommissioning. Design teams should confer with the GSA regional energy and facility management representatives and the project commissioning authority as needed.

- Understand how energy analysis information is used to predict building energy performance for GSA’s ongoing energy program.
- Understand the required deliverables for GSA’s facility management and energy programs.
- Confirm that the energy model meets the business needs of the project.
- Work with GSA facility management and energy representatives as well as the project commissioning authority to create a building energy performance baseline that can be used by GSA’s building performance programs (including, but not limited to, GSALink).
- Understand and use the “Design to BEA” MVD.

### 4.3.2 Requirements of Construction Teams

This section outlines the actions the construction teams should take to help make a project’s BIM(s) easily usable for energy performance analysis, commissioning, and recommissioning.

- Confirm that the energy model meets the business needs of the project.

- If changes to the design are made during construction, notify the GSA project team for the purpose of capturing such changes in the as-built BIM. The General Contractor, in coordination with the A/E, must complete any adjustments to the as-built BIM in accordance with the construction contract.
- Work with the project commissioning authority to ensure building energy performance during commissioning meets the energy performance baseline determined by the design energy model. Provide written explanations for any instances where the building energy performance baseline determined by the design energy model must be adjusted.
- Work with GSA facility management and energy program representatives as well as the project commissioning authority to finalize the as-built building energy performance baseline.
- As required by project needs, work with GSA facility management representatives to provide necessary information for consumption by GSALink. Comply with GSALink point naming standard, which is available from the GSALink team. Consult with your project team for the appropriate regional contact.

#### 4.3.3 Requirements of Commissioning Teams

This section outlines the actions the commissioning authority on a project or the recommissioning team for a building should take to keep a building's BIM current for use by GSA building managers and maintenance teams.

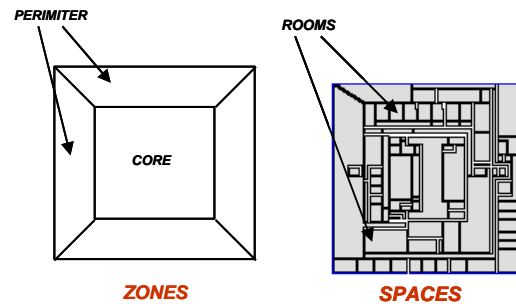
- During a new construction or alteration construction project, the commissioning authority must work with the GSA project team, the A/E team, and the construction team to ensure that the BIM accurately reflects the most current design or actual building energy performance.
- At the conclusion of project commissioning, the commissioning authority must ensure that the as-built BIM is updated to finalize the as-built energy performance baseline.
- For a recommissioning project, the team must document the deviations from and efforts to return to the building's established energy performance baseline, including if the building reached an improved performance level.

## 4.4 Zone-Based Modeling vs. Space-Based Modeling

### 4.4.1 Thermal Zones

At the heart of any energy simulation is the concept of a thermal zone. A thermal zone is a single space or group of indoor spaces that has uniform thermal load profiles and conditioning requirements. A simple way to think of a thermal zone is as a space that can be effectively conditioned using only one thermostat. Thermal zoning of a building helps the engineer determine the number and type of HVAC systems required. However, defining thermal zones requires a certain amount of engineering judgment. For example, perimeter offices all facing a similar orientation (N, S, E, or W) could logically be combined into one thermal zone since the solar, occupancy, lighting, and equipment loads are all similar amongst all the offices (Figure 10). However, differences in personal thermal comfort may make it more prudent for the engineer to zone the offices in groups of three, for example, in the design so that the occupants have more individual control over their environment. The engineer must take care to ensure that the grouped rooms in an energy model thermal zone are similar in all aspects; if not, the average properties of the zone will not

represent actual operation. Strategies for thermal zoning can differ significantly by building type. For example, hotels frequently have multi-perimeter and core thermal zones due to the wide range of thermal conditions and preferences (e.g. some people like it warm, some like it cool). Small residences typically have only one conditioned thermal zone (one thermostat), plus unconditioned spaces such as garages, attics, crawlspaces, and basements.



**Figure 10. Simplified Zone-Based Energy Model Partitioning vs. Space-Based Energy Model Partitioning with BIM**

When creating an energy model, the goal is to accurately represent the thermal zones. The most straight-forward modeling approach is to match the thermal zones in the model one-to-one to the thermal zones as designed. In traditional energy modeling, however, the modeler manually creates thermal zones and often makes significant simplifications (Figure 10). In many cases, simplification of zones is appropriate and even beneficial in reducing the computational overhead to achieve the same results. However, using BIM-based energy modeling thermal zoning may be more intuitive, as it allows energy modelers to create discrete zones based more on the actual spaces modeled in BIM (Figure 10), and less on engineering judgments, which may vary from project-to-project.

#### 4.4.2 Zone-Based Modeling

When creating a model for an energy simulation, in particular during early design, standard energy modeling practice requires the energy modeler to make engineering judgments in creating thermal zones when the actual HVAC design has not been determined. Spaces that are deemed thermally similar are combined into the same thermal zone, and an HVAC system is assigned to that thermal zone. While this simplification is appropriate in many cases, in others it is not. Zone-based models may be over-simplified, since multiple rooms / spaces with very different thermal loads (e.g. an office space with significant computer loads that has windows and an interior break room with no equipment) may be mistakenly aggregated and assigned the same loads ( $W/ft^2$ ), schedules (% on per hour), and HVAC system. Such simplification often results in less accurate simulation results. When the actual HVAC system design is known, possibly during Design Development (DD), the actual mechanical zoning scheme should be used to the maximum extent possible.

### 4.4.3 Space-Based Modeling

Space-based energy modeling generally uses the same input parameter types as zone-based modeling, but assigns them on the space level. Currently, most BIM-based energy simulation programs assume each space imported is its own thermal zone. There is currently limited functionality to allow thermal zones, defined as a group of spaces within the BIM-authoring tool, to be transferred directly into the energy modeling tool. BIM-based energy modeling adheres to the following process: a BIM of the building is exported from a BIM-authoring tool in the file format required by the simulation application (e.g. IFC or gbXML) and input into a BIM-based energy simulation application (e.g. RIUSKA, IES, Green Building Studio, Ecotect), additional inputs and assumptions are entered by the energy modeler to complete the required input process, and the BIM-based “front-end” runs the energy simulation. By avoiding the need to recreate building geometry in the energy simulation program, this process realizes significant time savings. Some space-based simulation programs allow for the aggregation of spaces into larger zones in the energy model itself; some allow aggregation of multiple thermal zones into a single HVAC zone, since some HVAC system types have the capability to serve multiple zones with different thermal profiles at the same time. Note that the ability to model each space as a thermal zone does not necessarily mean that the user should define all the spaces in the architectural model for use in an energy model. This issue is addressed further in Section 4.6.2.

## 4.5 BIM Data Exchange with Energy Models

### 4.5.1 Geometric Data

#### 4.5.1.1 Benefits

Importing geometric models into an energy simulation model achieves significant time savings by not having to create the building geometry within the energy simulation program. Additionally, modifications to building geometry within the BIM may be replicated in the energy model by simply importing a new geometric data model into the energy simulation program. Current data schemas commonly used to accomplish this are IFC, gbXML, DXF, and DWG. Typically, the latter two are imported as two-dimensional (2D) plans, and the 3D building geometry is then created by tracing the 2D plans. In general, the first two methodologies are BIM-based and are preferred, if available, since the 3D building geometry can be transferred directly, along with any other data intelligence the software supports.

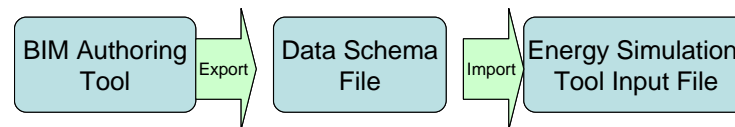
Two more benefits of geometric data exchange using BIM are repeatability and consistency. Rules of geometry simplification are defined in the software and are not subject to user interpretation. BIM-based data exchanges eliminate most of the need for interpretation and modeling judgment as required when creating models manually.

Typical building element data that may be transferred to the building analysis tool include walls, windows, curtain walls, slabs/floors, roofs/ceilings, columns, and spaces (see Section 3.5).

#### 4.5.1.2 Limitations

Current geometric model transfer functionality is not perfect. Frequently, building elements may end up missing, misplaced, or deformed. The quality of the data transfer depends on four variables: the quality of the building model (e.g. no missing elements or invalid wall connections), the quality of the BIM-authoring tool writer/exporter, the ability of the data schema used to clearly organize the information, and the building analysis tool translator/importer. Errors may occur if there is a deficiency in any one of these areas.

In addition, architectural models that represent actual architecture are too complex for and have different requirements than architectural models for energy modeling. There is therefore the potential need for two separate architectural models.



**Figure 11. Current Sequence of Information Transfer in BIM-Based Energy Modeling**

When geometric errors do occur, it is difficult to determine the source of error. One of the most difficult challenges in standardizing how this geometric information is organized is that each data schema, while technically adequate, may have a number of different ways to express the same objects and relationships. Therefore, to prevent geometric errors in the future, vendors, implementers, and downstream building analysis tools must agree on which methodology is to be utilized. Additionally, information transfer from a BIM-authoring tool to an energy analysis tool is generally a one-way process. Although still evolving, many tools do not currently have the capability to export changes from energy models back to the BIM-authoring tool for use. If exporting of data back to the BIM is supported, the scope of capabilities is typically limited.

As a general principle and given the current functionality of many building analysis tools, the greater the complexity of a geometric model, the greater the risk for errors in translating that geometry from a BIM to an energy analysis tool. Therefore, it is recommended to minimize the number of unnecessary elements to be translated. In particular, users frequently attempt to translate all the interior walls from a BIM into an energy simulation model or some other building analysis tool. This practice provides limited benefit in most energy simulations, since heat transfer between interior spaces with similar thermal conditions is generally negligible. Also, some energy simulation programs do not calculate heat transfer between interior surfaces. In these situations, the interior walls that do not separate thermal zones should be deleted, or at least modeled as separate elements such that export of the geometric model for analysis may be made without them. A future goal of BIM is to eliminate the need to make these adjustments, and enable the designer to seamlessly export the entire BIM model to a building analysis tool, independent of the level of complexity. Any modifications that need to be made would be automated in the export/import process by filtering out unnecessary elements.





**Figure 12. Geometric Model Issues and Corrections in an Energy Analysis Tool**

If a model requires significant work to correct geometry errors once imported into the building analysis tool, performing further required geometric modifications directly within the same tool may be the most efficient procedure. For example, suppose an architect creates a geometric model with the geometry defined to the best of their ability. The architect sends the model to a consultant to conduct daylighting analysis. However, the model does not translate properly due to deficiencies in the quality of the building model. It takes the consultant one hour to correct the geometry errors (wall and floor elements in this example) in the model after it is imported into a daylighting program. They then run the daylighting simulation. A week later, the architect changes the configuration of two windows, and wants to see the impact on the daylighting performance of the building. A new model is sent to the consultant. In this case, the consultant makes the required changes to the windows directly within the daylighting simulation tool, since that takes significantly less time than importing the new model and re-correcting the geometry errors which were originally encountered. In each case, the modeler must make a judgment as to which methodology is less time consuming.

In summary, GSA recommends that project teams work with an energy modeling expert from the beginning. As Section 2 explains, the goals for energy modeling must be established during the pre-design phase so that the project team takes into consideration energy modeling requirements when creating or re-creating the BIMs. If the project does not already have an as-



built model, early collaboration with an energy modeling expert can help ensure that the project team creates the most efficient and effective model for energy modeling. If the project already has an as-built model, then the project team would use the existing model to re-create a simplified version for energy modeling.

#### 4.5.1.3 *Recommended Future Developments*

Based upon GSA pilot case studies, the BIM team has identified several areas related to modeling geometric data for energy analysis that should be further developed:

- Improved transfer of curved surfaces
- Improved transfer of curtain wall data
- Diagnostic tools to assist the user in troubleshooting data translation issues (both in terms of visualizing the model being imported and automatic error-checking capabilities)
- Use of standard “benchmark” models to test exporting capability of BIM-authoring tools to analysis software, and vice-versa

GSA encourages BIM-authoring and energy modeling vendors to further develop these functionalities within their software.

#### 4.5.2 **Construction / Material Data**

##### 4.5.2.1 *Benefits*

The ability to import construction thermal data such as material layer sets and material properties such as thermal conductivity, specific heat, emissivity, reflectivity, etc., into energy models directly from a BIM would significantly reduce not only time in the energy modeling process, but also uncertainty. There is a potential for modelers to make assumptions about thermal properties based solely on the general construction type of the building. These assumptions are often inaccurate and not coordinated with the proposed design. This is frequently caused by a lack of communication between the architect and the energy modeler. Defining the thermal data in the BIM would greatly alleviate this problem. Frequently, the architect may only have information on construction types and not thermal data, either due to lack of data availability or lack of knowledge. In this case, automated association of construction type to thermal data, either within the BIM-authoring application or during import into an energy simulation, would be desirable.

##### 4.5.2.2 *Limitations*

Currently, few BIM tools export this type of construction data in IFC or gbXML, and most building analysis tools do not import it. The data schemas do support this type of information, yet data structure protocols and organizational methodologies have not been agreed upon and standardized across the industry.

#### 4.5.2.3 Recommended Future Developments

Based upon GSA pilot case studies, the BIM team has identified several areas related to modeling construction/material data for energy analysis that should be further developed:

- Effective transfer of construction types, material layer sets, thermal bridges, and material properties such as thickness, thermal conductivity, specific heat, reflectivity, transmissivity, absorptivity, and emissivity
- Industry-standard databases of typical material properties and constructions (e.g. ASHRAE data) that are available within the BIM-authoring application, either internally or web-based
- Links that bridge the gap between architectural information and the data that is needed for energy simulation
- Functionality to perform automatic comparative energy analysis of multiple architectural options (“rapid prototyping”) to provide high-level performance information early in the design process
- Use of BIM to populate data needed to confirm compliance with relevant LEED credits

GSA encourages BIM-authoring and energy modeling vendors to further develop these functionalities within their software.

#### 4.5.3 Mechanical Data

##### 4.5.3.1 HVAC Equipment

###### 4.5.3.1.1 Benefits

The ability to import HVAC equipment data into energy models directly from a BIM would significantly reduce not only time in the energy modeling process, but also uncertainty. There is a potential for modelers to make assumptions about HVAC operational parameters based on the system type and prior experience; however these assumptions are often inaccurate and not coordinated with the proposed design. The ability to store operational data within a BIM object of that equipment would reduce the potential for incorrect assumptions. Ideally, equipment manufacturers could post BIM objects on their website for free download. These objects would contain all the equipment properties, such as make, model, capacity, efficiency, performance curves, etc., in a format that is compatible with the most common BIM tools. These objects could be used in both the design BIM model and the energy model, allowing direct transfer of manufacturer-verified operational information into the simulation engine for analysis.

###### 4.5.3.1.2 Limitations

Currently, BIM tools have limited export capabilities for HVAC equipment data in IFC or gbXML, and most building analysis tools do not import it. The data schemas do support this type of information, yet data structure protocols and organizational methodologies have not been agreed upon and standardized across the industry.

Containing the HVAC equipment information within BIM objects presents additional challenges. For example, if an energy modeler wants to simulate different types, efficiencies, or sizes of HVAC components, then they have to go back to the BIM, make the change, and potentially rebuild or correct the model in order to perform the simulation. This may hinder the iterative process of energy modeling which is essential to optimize the design and operation of the building.

#### 4.5.3.1.3 Recommended Future Developments

Based upon GSA pilot case studies, the BIM team has identified several related to modeling mechanical equipment data for energy analysis that should be further developed:

- Transfer of equipment names, numbers, types, capacities, and locations within building
- Transfer of equipment full-load and part-load efficiencies (performance curves)
- Transfer of control mechanisms (e.g. type of controls, interlocks with other systems, Building Automation System control points, etc.) and data such as temperature set points (minimum/maximum), set point ranges (e.g. +/- 2%), normal control limits, and alarm limits (e.g. high/low)
- The ability to specify distribution system information such as total length of piping and ducting, and the associated pressure drop characteristics for those systems
- Transfer of system hierarchy and topology as related to operation and building zoning
- Equipment commissioning and maintenance requirements
- Use of BIM to populate data needed to confirm compliance with relevant LEED credits

GSA encourages BIM-authoring and energy modeling vendors to further develop these functionalities within their software.

#### 4.5.3.2 Lighting, Occupant, and Equipment Loads

##### 4.5.3.2.1 Benefits

The ability to import load data into energy models directly from a BIM would significantly reduce not only time in the energy modeling process, but also uncertainty. There is a potential for modelers to make assumptions about internal loads based on the area type and building mechanical/energy code requirements; however, these assumptions are often inaccurate and not coordinated with the proposed design. For example, the ability to store lighting load data in the space object or within a BIM equipment object (which would be converted to the associated space load based on the space in which it was placed) would reduce these incorrect assumptions and improve the process of information transfer. Ideally, lighting and other equipment manufacturers could post BIM objects on their website for free download. These objects would contain all the equipment properties, such as make, model, wattage, lumens/watt, etc., in a format that was compatible with the most common BIM tools. The objects and load information could be used in both the design BIM model and the energy model, allowing direct transfer of manufacturer-verified operational information into the simulation engine for analysis. Another desirable option would

be to have required mechanical/energy code assumptions based on industry standard sources of data (e.g. ASHRAE, PBS P-100) automatically assigned to the space object based on space type selected.

#### 4.5.3.2.2 Limitations

Currently, only a few BIM tools export load data in IFC or gbXML, and most building analysis tools do not import it. The data schemas do support this type of information, yet data structure protocols and organizational methodologies have not been agreed upon and standardized across the industry.

#### 4.5.3.2.3 Recommended Future Developments

Based upon GSA pilot cases, the BIM team has identified several areas in modeling load data for energy analysis that should be further developed:

- Continued development of load data transfer in terms of watts/ft<sup>2</sup>, occupants/ft<sup>2</sup>, etc. at the space level
- Effective transfer of load data for objects such as lighting, motors, and computers
- Use of BIM to populate data needed to confirm compliance with relevant LEED credits

GSA encourages BIM-authoring and energy modeling vendors to further develop these functionalities within their software.

### 4.5.3.3 *Spatial Data*

#### 4.5.3.3.1 Benefits

BIM spatial data is the data associated with a modeled space. Space and zone objects (not to be confused with HVAC zone objects that are an aggregate of multiple spaces) contain area and volume data used for load and energy consumption analysis. Population of these space objects with relevant load data for thermal analysis can significantly reduce modeling time requirements. Space loads, design temperatures, outside air requirements, and conditioning schedules are all examples of spatial data.

#### 4.5.3.3.2 Limitations

Currently, all BIM tools export spatial data, which includes information such as area and volume. Building analysis tools require these space objects for importing. Only a few BIM authoring tools support the export of additional mechanical information for

the spaces. However, only a few building analysis tools can read and translate this BIM data, as addressed in the previous section.

#### 4.5.3.3 Recommended Future Developments

Based upon GSA pilot case studies, the BIM team has identified several areas in modeling spatial data for energy analysis that should be further developed:

- Transfer of space design and operating temperatures
- Transfer of outside air requirements and full-load flow data
- Transfer of space conditioning, occupancy, and load schedules (for understanding of occupant behavior)
- Further functionality to aggregate spaces into zone objects/thermal zones, and multiple thermal zones into HVAC zones
- The ability to assign HVAC equipment to thermal/HVAC zones
- Use of BIM to populate data needed to confirm compliance with relevant LEED credits
- The ability to automatically define reference (baseline) building and systems types and/or Energy Use Intensity (EUI) per industry energy performance rating methods (such as contained within ANSI/ASHRAE/IESNA Standard 90.1)

GSA encourages BIM-authoring and energy modeling vendors to further develop these functionalities within their software.

## 4.6 BIM Building Elements and Spaces

### 4.6.1 Building Elements for Design

Physical elements (as opposed to spaces) in a building model are objects defined as building elements. These include walls, doors, windows, floors, ceilings, roofs, beams, columns, and other building components. In order for these objects to be included as the intended object types when exporting to a given data schema, they must be either (a) created using authoring tools for the intended object type (e.g., a wall creation tool), or (b) created from a data schema-compatible library provided by the vendor or others for the BIM-authoring application.

When BIM users create building elements using the wrong toolset in a BIM-authoring application, the objects are often exported to the desired data schema with the wrong object types. For example, inclined beams are sometimes modeled as roof elements, and columns are often modeled as very short walls. Furthermore, even if the correct type of element is used in the model, it is also a requirement to specify the proper sub type of elements in some cases. For instance, precautions must be taken when modeling walls that are exposed to the outdoors as well as indoors to properly separate or divide the wall into exterior and interior surfaces. Although there are many ways to model such walls to serve the purpose of visual representation (they look correct in the drawing), many of those modeling methods will create problems in the BIM data. Therefore, whenever a tool is available in the BIM-authoring application to create the correct object type, it should be used.

In cases where such tools are limited in functionality or not available (e.g., some applications cannot create sloped beams), the user should consistently create a generic object that can be assigned a building element type. The user should not use an available but incorrect tool. Most BIM-authoring applications support creation of such generic objects and mapping of such elements to IFC or gbXML object types so that the resulting model contains elements with correct geometries and correct object types.

With respect to the capital program delivery process, A/Es should create BIM models during the concept design stage. (See [GSA BIM Guide 02](#) - Spatial Program Validation for more information.) While GSA realizes that A/Es may prefer to use stacking and bubble diagrams at this stage, GSA requires basic building elements at final concept design, and A/Es should produce a spatial program BIM that meets the requirements outlined in both BIM Guide 02 and BIM Guide 05.

At a minimum, A/Es are required to have BIM elements for spaces, interior walls, exterior walls, doors, windows (including skylights), slabs, beams, columns, and shading devices in the concept phase BIMs. The following sections provide information for each of these building element types that are required for energy simulation.

**Table 3. Building Elements Required for Energy Simulation**

Building Elements	Section
<b>Walls</b>	4.6.1.1
<b>Windows</b>	4.6.1.1.1
<b>Curtain Walls</b>	4.6.1.1.2
<b>Doors</b>	4.6.1.1.3
<b>Slabs / Floors</b>	4.6.1.2
<b>Roofs / Ceilings</b>	4.6.1.3
<b>Columns (optional, relevant for daylighting)</b>	4.6.1.4
<b>Shading Devices</b>	4.6.1.5

#### 4.6.1.1 Walls

Wall elements define vertical enclosure of spaces and are critical components in energy simulation. For energy analysis, A/Es will need to differentiate between interior and exterior walls. In IFC or XML BIMs, walls must have relationships to their adjoining (connected) walls and the spaces they bound. This relationship between walls is typically created automatically by the BIM-authoring application when the walls' base lines are connected. The bounding relationship to spaces is also created automatically when the faces of the wall and the space are coplanar. Users should consult with their BIM-authoring application documentation for instructions on how to ensure that these relationships will be included in the export to an IFC or XML BIM. In some cases, limitations exist in the BIM-authoring application, which will require additional corrections to wall surfaces in the BEM software.

In conventional building designs, the vast majority of walls are straight and of uniform height. These are easily modeled using the appropriate tools found in most BIM-authoring applications. If the BIM-authoring application supports the use of multiple or

generic tools for component creation, the user must ensure that components are assigned the correct Building Element types so that they are exported as the correct types to an IFC or XML BIM.

For early design energy modeling, it is best to keep interior walls to a minimum, in particular when they separate spaces that are anticipated to have uniform thermal loads and conditioning requirements. Having unnecessary interior walls provides little added benefit to an energy simulation, and can cause significant problems with data export and import. The more building elements your model has, the greater the chance that the IFC or XML exporter in the BIM-authoring tool will have problems properly defining the building geometry. Additionally, several energy simulation tools do not even calculate heat transfer through interior walls, presenting no marginal benefit in modeling interior walls.

In general, a useful methodology is to keep the critical wall elements needed for the energy simulation on a separate layer from the wall elements that are not needed. This methodology requires the modeler to judge whether the criticality of the walls and their contribution to the thermal performance of the building warrants their inclusion in the model. For example, if thermal mass in the building is significant (e.g., if the building has a large percentage of glass or if passive solar contributions are to be investigated), then definition of the interior walls in the BIM-authoring tool is important to track solar penetration through the building. Without that definition, solar gain might be assigned to surfaces that will not receive any solar radiation (e.g. floors) instead of interior walls, which in turn transmit heat to the adjacent rooms. Similarly, in cases where passive temperature control methods are included in the design, the mechanical properties of wall materials or similar building elements must be included in the energy model. Treatment of building internal thermal mass and heat transfer through walls should be considered in both the development of the BIM and the selection of the building analysis tools to be utilized.

It is common practice for architects to create wall objects that span several floors. This can cause problems when importing the geometry model in a building analysis tool. Several BIM-authoring applications require wall elements for each space to be associated with the level to which the space is assigned. Therefore, a second floor space that is bound by a two-story wall that was modeled starting on the first floor may be exported as not having an adjacent wall. Although this is not the case for all building analysis tools, it is good practice to model each wall as only extending up one level, copy that wall element, and paste it to be aligned on the level above it if needed. See GSA BIM Guide 02 for further discussion on this modeling consideration.

#### 4.6.1.1.1 Windows

Window objects should be created using the appropriate tool in the BIM-authoring application. Windows should always be inserted into a wall component and they must not extend outside the wall geometry.

Creating a window by first cutting an opening in the wall and then inserting a window may cause problems if the wall object is not linked to the window object. In this situation, BIM-authoring applications must keep track of two different relationships (i.e., opening-wall relationship and window-opening relationship). If windows are created using the designated window tool, only one relationship (i.e., wall-window relationship) is needed.

#### 4.6.1.1.2 Curtain Walls

Many building designs include configurations in which an entire wall or face consists of windows and possibly also glass doors (e.g., a storefront) (see Figure 13). In these cases, GSA requires that the windows and doors be modeled as “contained” in a wall object. If a curtain wall is modeled as a “wall” rather than a “window” in a wall, building analysis tools frequently will interpret the curtain wall as being opaque, particularly when using the IFC schema. Care should also be taken to ensure that doors and windows don’t extend outside the wall area. This situation may be accidentally created in the corner of a building (corner windows) or in staircases, where windows can span multiple floors. Special attention must be given to setting the relative height of the window. Modeling curtain walls as window objects within wall objects will ensure that the IFC or XML import into the building analysis tool results in the proper designation of the transparent window surfaces.

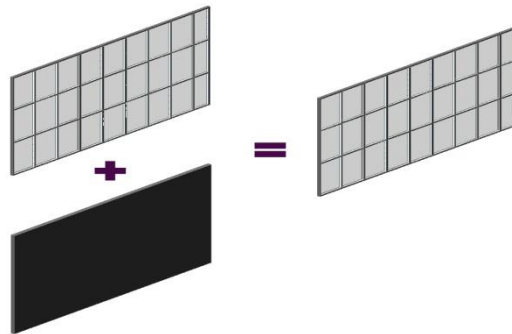
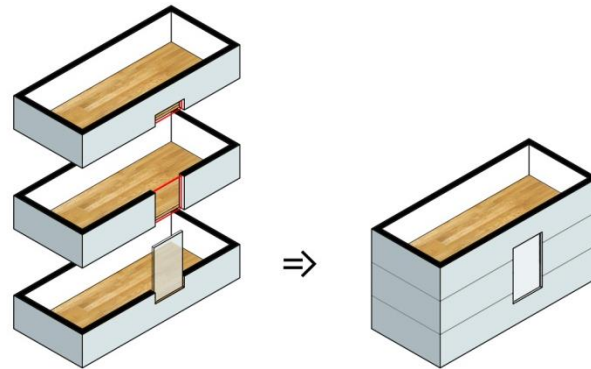


Figure 13. Wall Component that is Fully Glazed

In cases where walls are modeled separately for each building floor and windows span floors, the user must ensure that there are openings in the walls for each building floor. Without a host wall and the expected bounding relationship to spaces, a window will be orphaned and floating. This can cause errors or unexpected results in analysis such as energy simulation calculations. Another option when such openings cover most of the wall area and span multiple floors is for the wall to be modeled as one multi-story wall, if allowed by the BIM-authoring application. Before selecting this option, consider how this will impact other uses for the BIM, including meeting the requirements of other GSA BIM Guides.

An example of a window area spanning multiple floors is shown in Figure 14.





**Figure 14. Window on the First Floor May Require Openings Added on Next Two Floors**

#### 4.6.1.1.3 Doors

Door objects should be created using the appropriate tool in the BIM-authoring application. In most cases, this tool can also model passageways or other access openings between spaces that do not have doors.

As with windows, doors should always be inserted into a wall component and they must not extend outside the wall geometry. Creating a door by first cutting an opening in the wall and then inserting a door may cause problems if the wall object is not linked to the door object. In this situation BIM-authoring applications must keep track of two different relationships (i.e., opening-wall relationship and door-opening relationship). If doors are created using the designated door tool, only one relationship (i.e., wall-door relationship) is needed.

#### 4.6.1.2 Slabs / Floors

Floor slab objects should be created using the appropriate tool in the BIM-authoring application. If the BIM-authoring application does not include a designated tool for this purpose, or if the tool's functionality is limited (e.g., does not support slabs with irregular profiles), the user should create a generic object that can be assigned a Building Element type (in this case, Floor Slab). The user should not use another object-specific tool to visually represent the slab but rather should use a generic object that can and should be mapped to an IFC element for the floor slab. Most BIM-authoring applications support creation of such generic objects and mapping of such elements to existing IFC or XML BIM object types, so that the model contains elements with correct geometries and correct object types when imported into building analysis software.

It is essential that the floors are modeled as slab objects and that the joints between walls and slabs are modeled as accurately as possible, with the information known at that time, for export of the BIM for accurate thermal analysis.

#### 4.6.1.3 *Roofs / Ceilings*

Roof and ceiling objects should be created using the appropriate tool in the BIM-authoring application. If the BIM-authoring application does not include a designated tool for this purpose, or if the tool's functionality is limited (e.g., does not support roofs with irregular profiles), the user should create a generic object that can be assigned a Building Element type (in this case, Roof Slab). The user should not use another object-specific tool to visually represent the roof but rather should use a generic object that can and should be mapped to an IFC element for the roof slab. Most BIM-authoring applications support creation of such generic objects and mapping of such elements to existing IFC or XML BIM object types, so that the model contains elements with correct geometries and correct object types when imported into building analysis software.

#### 4.6.1.4 *Columns*

For most building energy simulations, columns are not critical. Columns rarely reduce the volume of the space sufficiently to make a noticeable difference in the simulation results, and several energy simulation programs won't allow columns to be modeled. However, in existing buildings with large masonry columns, the thermal mass of the structure can fundamentally change the energy performance of the building. In addition, for computational fluid dynamics (CFD) and daylighting/thermal insulation studies, columns can have a significant impact on the simulation results via solar shading and airflow obstruction, and should be modeled using the appropriate tool in the BIM-authoring application. If the BIM-authoring application does not include a designated tool for this purpose, or if the tool's functionality is limited (e.g., does not support columns with irregular profiles), the user should create a generic object that can be assigned a Building Element type (in this case, Column). The user should not use another object-specific tool to visually represent the column but rather should use a generic object that can and should be mapped to an IFC element for the column. If the required data format does not support column object types, they should be modeled directly within the CFD/daylighting simulation tool.

For more information on how columns may be modeled within a BIM-authoring tool, please see GSA BIM Guide 02 - Spatial Program Validation.

#### 4.6.1.5 *Shading Devices*

Shading devices, including overhangs and fins, impact the amount of incoming solar radiation that penetrates through windows and curtain walls. Some BIM-authoring tools allow for the explicit specification of shading objects, however, in others the user must use "work arounds", such as using slab or wall tools to create shading devices. The ability of downstream building analysis applications to interpret shading devices correctly when these alternative definitions are used varies widely. Until robust shading device tools become common in BIM-authoring applications, A/E's should model overhangs as individual objects using slab tools. Floor slabs should not be extended to produce overhangs.

#### 4.6.2 Spaces / Rooms / Zones

Spaces are one of the most important object types in energy simulations. During pre-design, tenant requirements are described in terms of spatial program requirements; furthermore, throughout building design and operation, many performance metrics utilize spatial data. Consequently, modeling spaces accurately is one of the most important tasks in creating BIMs. Space objects are normally represented in plan drawing view with a data tag (e.g., name, number, area, volume, etc.).

To meet spatial validation requirements, spatial information will be used for design assessment relative to the spatial program issued by GSA to the A/E. This will include space area calculations and comparisons to the original Space Program, using [PBS National Business Space Assignment Policy](#) (NBSAP) area calculation rules.

When spaces are defined properly using surrounding walls, the area inside them is defined precisely. In a BIM, the space itself is a 3D object. The space object is typically created automatically with its geometry aligned with the inside faces of surrounding building elements (e.g., walls, floors, ceilings, etc.). If the geometry of these building elements changes, the space object should also be updated to reflect the new geometry of the space. Some BIM-authoring applications maintain relationships between the space and surrounding building elements, and thus are capable of automatically updating the space data. Others require that such updates are performed by the user, and most provide tools for this purpose. Users should consult product-specific instructions to learn the procedures for a specific BIM-authoring application.

Some BIM-authoring applications provide several ways to create space objects. Ensuring that space heights are properly defined (up to ceiling, up to slab, overlapping slab, etc.) is a critical step in the process, and the users should consult with the BIM-authoring application vendor to learn the recommended method for creating space objects that will be exported to an IFC or gbXML file. Some details about how this is done can be found in GSA BIM Guide 02.

##### 4.6.2.1 Required Spatial Information for Spatial Validation

A/Es must define spaces for any area over 9 square feet (0.8 m<sup>2</sup>). See BIM Guide 02 for details. In addition to these requirements on individual space objects, A/Es must also create a full building floor space (with a space name and number) that represents GSA Gross Area (See NBSAP for definition).

The only spatial information requirements relevant to BIMs used for energy models are the approved space names from GSA BIM Guide 02. Most software applications do not yet take full advantage of the additional information that may be associated with the space, such as watt/ft<sup>2</sup> lighting load, people/ft<sup>2</sup> occupant load, and heating and cooling setpoints. Once the schemas and software applications have matured to allow more in-depth use of this type of information, GSA requirements will be revised to include more information content for BIM spaces.

#### 4.6.2.2 *Unoccupied or “Cavity” spaces*

GSA spatial validation requirements only require areas over 9 square feet (0.8 m<sup>2</sup>) to be defined as spaces. However, when preparing a BIM for energy simulation, all areas must be defined as spaces, regardless of how small they are.

This requirement is due to the fact that most building analysis tools will recognize a wall element as “exterior” if only one side has a space adjacent to it. Therefore, an undefined cavity in the middle of a building will result in the adjacent interior wall being considered as exterior. This may cause the building analysis tool to erroneously assign an exterior wall construction type to it, invalidating the simulation results. Although some building analysis applications allow the user to redefine the nature of the wall (or any other object) within its interface, others do not.

#### 4.6.2.3 *Space Height and Plenums*

Spaces shall be defined and modeled with a vertical extent from finished floor to finished ceiling. Several applications require the bounding floors and ceilings to be slightly overlapped with the space boundary. When a space contains suspended ceilings and the resulting plenum area, spaces must be made for both the room space and the plenum space. Space heights for the room must be modeled up to the intended height of the suspended ceiling. Space heights for the plenums must be modeled from the height of the suspended ceiling up to the height of the floor slab above it. Modeling practices for space heights differ between software applications. Users should consult product-specific instructions to learn the procedures for a specific BIM-authoring application.

Spaces should be checked visually in a 3D viewing platform to ensure they are modeled with the correct height. Since many designers still work with and view models in 2D, a typical space modeling error is to model spaces with zero height or at the default height of the BIM-authoring tool (frequently 10 feet).

#### 4.6.2.4 *Room Separation Lines*

Physically bound building volumes that have several functionally different spaces contained within them are required to be separated in the BIM using a room separation line. One physical space in the BIM may contain several areas that are treated individually in the GSA spatial program. According to the NBSAP, spaces should be represented and broken down into functional spaces (e.g., office area, storage area, building common area, vertical penetration) as defined in the GSA spatial program, even though they may be part of a larger physical space. If two areas have different functional space classifications they must be modeled as two separate spaces, even if they are within the same physical space. For example, there may be a reception area within a lobby. In this case, the reception area (Total Office) and the remainder of the lobby area (Building Common) must be modeled as separate non-overlapping spaces.

Most building analysis tools do not recognize the “virtual” nature of a room separation line. When imported, room separation lines are frequently interpreted as opaque walls. This interpretation can result in erroneous simulation results. Some simulation tools allow the user to delete the “false” opaque wall, make it invisible, or place a large void in the wall. This type of

functionality allows the room to be simulated correctly, although it may be time consuming to make the required modifications. Since room separation lines are virtual boundaries that do not impact thermal or fluid flows over or through them, it is recommended in most situations to remove the room separation lines before exporting from the BIM-authoring tool, and reorganize the spatial information where required in the building analysis tool after importing. The preferred methodology will depend on the exact configuration of the spaces, the analysis required, and the functionality of the tool being used for analysis.

#### 4.6.2.5 Space Boundaries

Space boundaries form a critical concept for a) correctly defining appropriate relationships between spaces and the building elements that enclose a space and b) defining the geometry associated with the spaces independent from the geometry of the bounding elements. Space boundaries can be broken down into two primary types: 1st level space boundaries and 2<sup>nd</sup> level space boundaries (Note: 3rd, 4th, and 5th level space boundaries exist, but they are not discussed in this Guide). 1st level space boundaries typically correspond to the “architectural” space boundaries and are defined irrespective of adjoining spaces. 2nd level space boundaries are defined by accounting for adjacent spaces, and are sometimes referred to as “thermal” space boundaries. Figure 15 demonstrates the difference between the two types of space boundaries. In this example, the single long wall (WALL 1) will result in Space 3 being assigned a 1st level space boundary spanning the entire length of Wall 1. However, a thermal calculation engine requires information about how much of that wall is adjacent to different spaces on the other side of it (with potentially different thermal conditions) in order to determine conductive and convective heat transfer between the spaces. Therefore, for energy modeling purposes, Wall 1 needs to be divided into multiple 2nd level space boundaries (BOUNDARY 1 & 2) so that appropriate relationships between a thermal space (in this case Space 3) and its surrounding spaces (Spaces 1 and 2) are defined in the simulation engine for determining heat transfer between the spaces.<sup>xx</sup> Based on this space boundary concept, the intersecting portion of the two walls (illustrated in red) is ignored in the thermal simulation model, because of the typical one-dimensional heat transfer assumption used in most energy simulation engines. This intersection can only be described if two dimensional heat transfer calculation is available.<sup>xxi</sup>

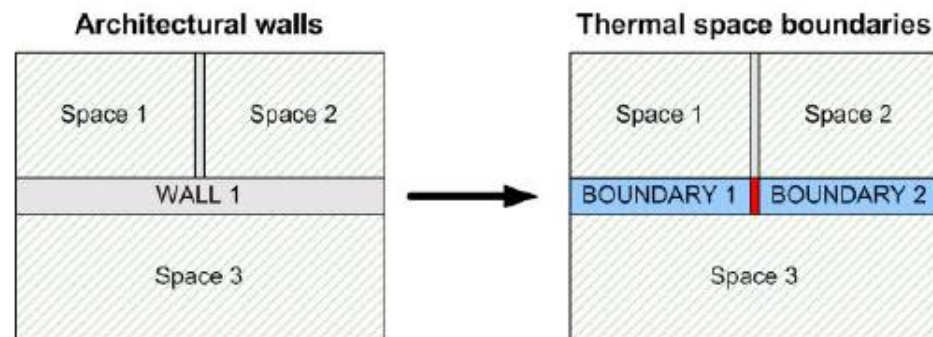


Figure 15. 1<sup>st</sup> Level Wall Space Boundaries (Architectural) vs. 2<sup>nd</sup> Level Wall Space Boundaries (Thermal)<sup>xxii</sup>

The creation of 2nd level space boundaries is also necessary in some energy simulation when different instances of wall elements (i.e. construction types) bound a single space. Figure 16 illustrates such a scenario.

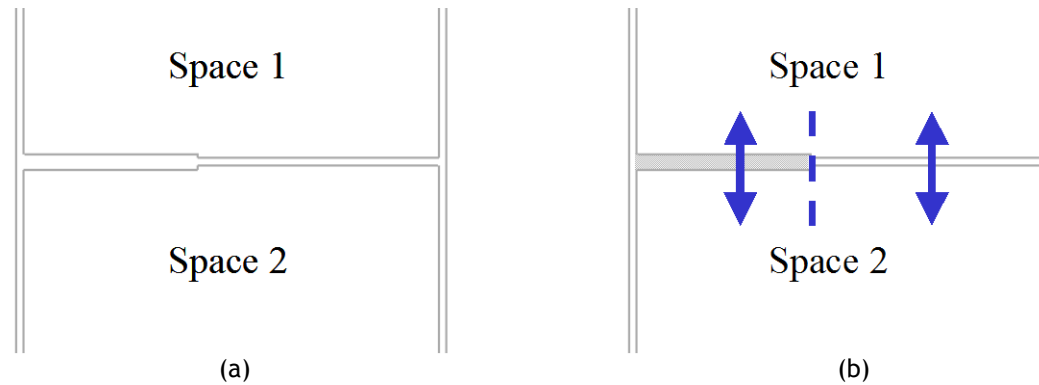


Figure 16. 1<sup>st</sup> Level Wall Space Boundaries (a) vs. 2<sup>nd</sup> Level Wall Space Boundaries (b) for Multiple Wall Instances<sup>xxiii</sup>

Finally, when spaces do not align vertically (spaces on one floor do not match up one to one with spaces above and below), 2nd level space boundaries must be defined to correctly define their thermal relationships, as shown in Figure 17.

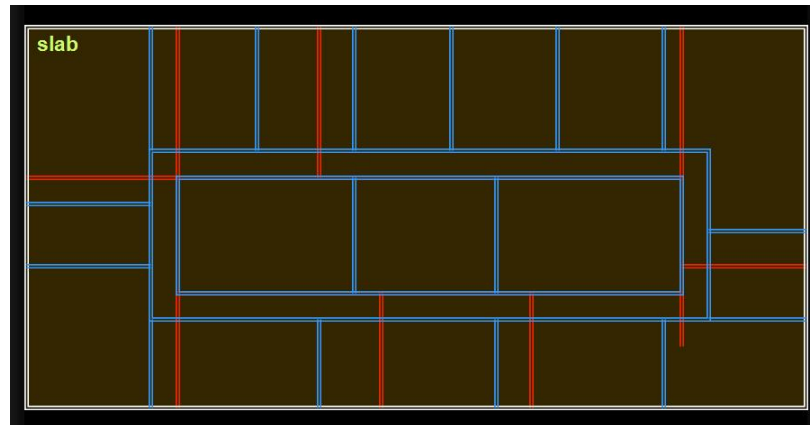


Figure 17. The Need for 2<sup>nd</sup> Level Space Boundaries is Evident by the Non-Uniform Wall Space Boundaries Between Adjacent Floors.<sup>xxiv</sup>

Most BIM-authoring applications specify 1st level space boundaries in IFC to some degree, although current functionality for 2nd level space boundaries is limited. Further development by BIM-authoring tool vendors to enable IFC-based 2nd level space boundaries will be required as BIM-based energy analysis becomes more common, and there is ongoing work in developing implementation guidelines and MVDs for 2nd level space boundaries through the OGC AECOO Testbed. gbXML is based on the principle of heat transfer surfaces (which are the equivalent of 2nd level space boundaries); therefore, any gbXML-compliant BIM-authoring tool inherently supports this concept. However, as with IFC, there needs to be more standardization of how gbXML is implemented for certain building configurations in different tools. Users should check the documentation for their BIM-authoring application to ensure they are modeling spaces and surrounding building elements in the manner recommended by the application vendor in order to ensure that the correct relationships are included in the IFC or XML file.

#### 4.6.2.6 *Updating Space Boundaries*

Modeling building spaces properly in BIM requires great care and attention to detail. Users must ensure that space object geometry is updated when surrounding walls, floors, or ceilings are moved or changed. A common problem is that spaces are not updated to maintain alignment with the walls as the design evolves and changes. This results in area calculation errors and potential problems in correctly defining thermal relationships, as described earlier in this Guide. Changes to any elements that bound spaces should be followed by a corresponding update to the space object boundary. In many BIM-authoring applications, updating space boundaries to re-align to the inside face of bounding elements can be automated or semi-automated. The user must ensure that any automatic updates in the BIM-authoring application are occurring correctly.

Some BIM-authoring applications are designed to automatically resize contained space objects when space-bounding elements are moved. If a space-bounding element is converted to another object type (e.g., a wall is changed to a column) and subsequently moved, the affected space may not be resized properly. In this case, the user may need to manually invoke a “resize” of the space object.

Inaccurate or careless modeling of walls, partitions, floors, and ceilings can result in problems with space objects. For example, in some BIM-authoring applications, a small gap between walls that appear to be connected can cause the space object to “leak” into an area that should really be another space. Space objects should be checked to ensure there are no missing space areas. Users should look for missing space areas, overlapping spaces, or gaps between spaces and adjacent bounding elements.

#### 4.6.2.7 *Zones*

Spaces can be grouped for many different analysis and organizational purposes. These groups are often referred to as zones. A space can belong to several zones, and the members of any particular zone do not have to be adjacent. For example, in a historic preservation project, there may be multiple spaces that are historic zones in the building, but these spaces may be in different areas of the building. In addition to being part of the historic zone, some of these spaces may also be part of a security zone or belong to an organizational department zone.



Some typical zones on GSA projects include Security Zones, Preservation Zones, Fire Zones, Occupant Zones, Daylighting Zones, Thermal Zones, and HVAC Zones. Some zones are only required in certain types of projects (e.g. courthouses, historic buildings). A/Es should consult with the GSA project team to determine what additional zone types and properties are required. The designation and use of BIM zonal information in facilities operations and maintenance can reduce operating costs and support more effective building management. For energy simulation, spaces should be assigned to an appropriate Thermal Zone and/or an appropriate HVAC Zone (when Thermal Zones are defined differently from HVAC Zones.)

A/Es should consult their BIM-authoring application documentation for instructions on how to create zones for export to an IFC or XML file.

## 4.7 Model Checker Development

The development of model-checking software to facilitate the use of BIM for energy modeling is in an early stage. Model-checking software may potentially be used to ensure that a BIM is correctly designed and populated with the necessary information to successfully perform energy simulation. This process would screen a BIM prior to exporting to a building analysis application using a set of pre-defined rules specific to the particular application's data requirements. Note that these requirements may differ between building analysis applications. For example, spaces may be defined at the wall centerline or on the bounding walls interior face. Ideally, as the industry continues to develop and energy modeling using BIM becomes more standardized, these "rule sets" will become more and more streamlined, with one set possibly used for checking BIMs for export to the vast majority of building analysis software. Several ongoing efforts exist, including projects at GSA, Lawrence Berkeley National Laboratory (LBNL), and ASHRAE to identify the building geometry, elements, and properties that must be checked to ensure an effective transfer of information to an energy simulation program.

An ideal model checker would also have the functionality to generate a report that warns users of errors and/or missing data prior to exporting a data schema file or information directly to building analysis software. The following sections summarize a few types of information that a model checker could potentially verify.

### 4.7.1 Proposed Model Checker Capabilities

#### 4.7.1.1 *Space Definition*

A model checker could determine if spaces are properly defined using correct wall space boundaries (e.g. inner face vs. wall centerline), the correct height (e.g. up to ceiling surface vs. overlapping ceiling surface), and space boundary types (e.g. 2nd level space boundaries).



#### 4.7.1.2 *Spatial Data*

The completeness of the following spatial data could be checked: lighting and equipment loads (watts/ft<sup>2</sup> or total wattage), occupant loads (ft/person or number of occupants), conditioning requirements (heated, cooled, heated and cooled, unconditioned), conditioning schedules (e.g. hours per day on/off), design space temperatures and setbacks/setforwards (degrees Fahrenheit or Celsius), outside air requirements (e.g. cubic feet per minute per person), infiltration rates (e.g. air changes per hour), and lighting, equipment and occupant schedules.

#### 4.7.1.3 *Thermal / HVAC Zones*

A model checker could verify that all spaces are assigned to a Thermal Zone object, that all the Thermal Zones are assigned to an HVAC Zone, and that all HVAC Zones are assigned an HVAC equipment type (if conditioned). This would facilitate the correct assignment of systems to spaces once imported in the energy model.

#### 4.7.1.4 *Space Loads Based on Object Types*

Instead of having to manually assign a load value to each space in the energy model (e.g. watts/ft<sup>2</sup> lighting), it would be beneficial if the modeler(s) could define load-producing equipment objects (e.g. lighting fixtures, motors, computers) in the room space or define load values in the space object within the BIM, and have the load values of those objects read and the appropriate parameters translated to the energy model. For example, the modeler could choose to place 10 15-watt compact fluorescent light (CFL) fixture objects in a 200 ft<sup>2</sup> room. The BIM model would then calculate that the lighting load for the room would be 0.75 watts/ft<sup>2</sup>. A model checker could determine if the appropriate object information, such as lighting and equipment loads, exist within a particular room given its occupancy type. This process could be further simplified if equipment manufacturers offer BIM objects for their equipment.

#### 4.7.1.5 *HVAC Equipment Object Types*

Instead of assigned equipment parameters within the energy model, which frequently uses default operating data, it would be beneficial if the modeler(s) could define HVAC equipment objects (e.g. chillers, pumps, fans) in the BIM model, including the operating characteristics (e.g. full-and part-load efficiency, capacity, control type), with the appropriate parameters imported to the energy model. A model checker could determine if the proper HVAC equipment objects and characteristics exist within a BIM. This process could be further simplified if equipment manufacturers offer BIM objects for their equipment.

#### 4.7.1.6 *Construction Object Types*

A model checker could verify if the appropriate construction material data, such as thermal conductivity, thermal mass properties, and surface finish properties, are assigned to room bounding surfaces.

#### 4.7.1.7 *Adiabatic vs. Non-Adiabatic Adjacencies*

Space-bounding surfaces could be checked to see whether they have been designated as adiabatic (heat transfer exists) or non-adiabatic (no heat transfer exists). This information could be used to reduce the run time required for the energy simulation. This would prevent users from having to delete or filter internal walls solely to simplify the model for energy analysis.

#### 4.7.1.8 *Code Compliance*

A model checker could automatically determine if the modeled space loads, equipment efficiencies, etc. meet a particular mechanical or energy code, such as ANSI/ASHRAE/IES 90.1, ANSI/ASHRAE Standard 55, ANSI/ASHRAE Standard 62.1, California (CA) Title 24 Part 6, federal mandates, or the International Energy Conservation Code (IECC). For example, a model checker could flag a building design that has a lighting density of 1 watt/ft<sup>2</sup>, if the local energy code requires 0.8 watts/ft<sup>2</sup> maximum for that particular space type.



## Section 5 Energy Modeling Case Studies



## 5 Energy Modeling Case Studies

### 5.1 Wayne Aspinall Federal Building

The energy modeling processes utilized for the Wayne Aspinall Federal Building are examples of how BIM and building analysis software data can be appropriately viewed and exported in a limited and controlled manner to help the process of designing a net-zero energy building.

Constructed in 1918, The Wayne Aspinall Federal Building and Courthouse is located in Grand Junction, CO and includes over 24,000 net square feet of usable space for a variety of government agencies. The building was originally used as a post office and courthouse, and was expanded with a major addition in 1939. The American Recovery and Reinvestment Act authorized a \$15 million partial modernization of the existing building, including replacement of the mechanical, lighting, electrical, elevator, and plumbing systems with new energy-efficient infrastructure. The design/build project also included replacement of the roof, public and interior space upgrades with reconfiguration of tenant spaces, exterior restoration, and security and fire life safety upgrades. The project was completed in January 2013. The high-level goal of the project was to provide an energy-efficient, high-performance green building while also accentuating the historic nature of the existing Wayne Aspinall Federal Building.

Specific energy-related goals of the project included achieving LEED Platinum certification under LEED 2009, the highest level awarded by the U.S. Green Building Council, and Net Zero Energy Usage, meaning that the facility should produce enough energy to balance the net electrical consumption of the building to zero or better on an annual basis. The project achieved the LEED Platinum certification in September 2013.

The major energy-related elements of the final design included a 123.2 kW photovoltaic array on the roof and canopy, and a geothermal system consisting of 32 475-foot-deep wells with water-source heat pumps and decoupled ventilation systems. The geothermal system efficiently absorbs heat from the building in the summer and provides heat in the winter. A 40-year life cycle was considered in the design of the building and its systems, which allowed the higher capital cost of the geothermal well system to be justified through its future energy cost savings in the life cycle cost analysis required by GSA, as compared to a few other systems which were considered.

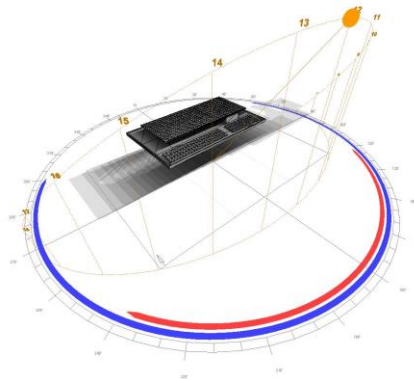


Figure 18. Performance of the New PV Array for atop the Wayne Aspinall Federal Building was Analyzed Using Autodesk Ecotect<sup>xxv</sup>

The building energy efficiency measures include:

- Daylighting controls
- Approximately 0.7 Watts/ft<sup>2</sup> average lighting power demand across the building (does not include impact of occupancy and daylighting controls) via use of both fluorescent and light-emitting diode (LED) technology
- Thermally-improved building envelope, including addition of spray foam insulation inboard of existing masonry
- Thermally-improved historic windows, including addition of interior storm window with high-performance solar film
- Water-source variable refrigerant flow system tied to GeoExchange loop
- Dedicated outdoor air system with air-to-air heat recovery, indirect evaporative cooling, and full space ventilation shut-off capability based on occupancy
- Extensive plug load monitoring to allow for real-time feedback and behavioral modification of occupants
- Wireless building automation technologies

TRACE 700 was utilized for the energy analysis throughout all phases of the project. Early in the project, a gbXML file export from the BIM was used for preliminary load and energy analysis. Details such as complete closure of the building spaces and proper definition of space boundaries needed to be edited before exporting. Items such as definition of the ceiling plenum spaces were performed in TRACE since that was determined to be easiest approach, and spatial information used for occupancy, load, and scheduling were input using customized libraries in TRACE. Sections from the BIM model were also used to quickly analyze the existing building construction and make assumptions required for early parametric building energy simulation. The automatic scheduling capabilities of the BIM software also allowed the lighting designers and energy modelers to dynamically check lighting power space-by-space to meet the aggressive design goals of the project.

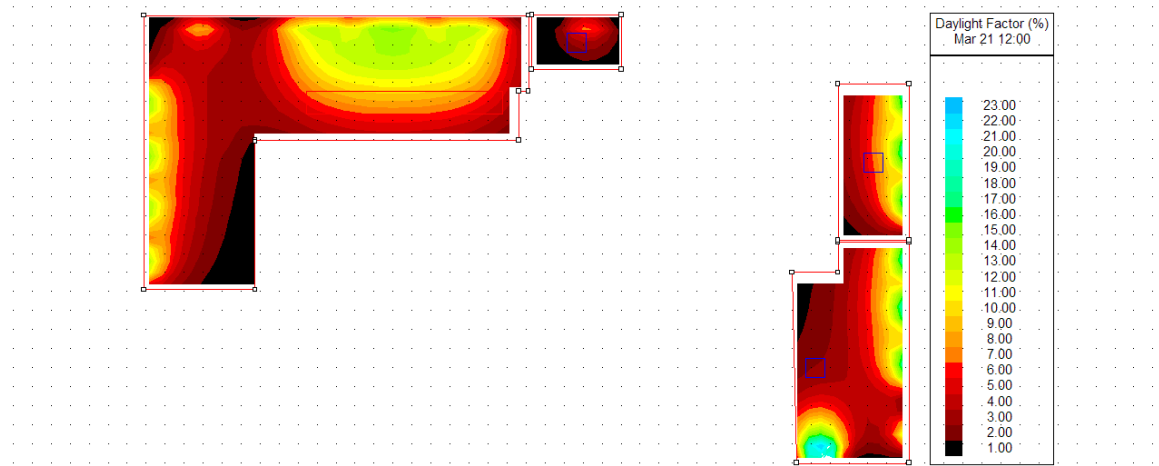


Figure 19. Daylight Penetration into the Wayne Aspinall Federal Building was Analyzed Using Integrated Environmental Solutions Virtual Environment<sup>xxvi</sup>

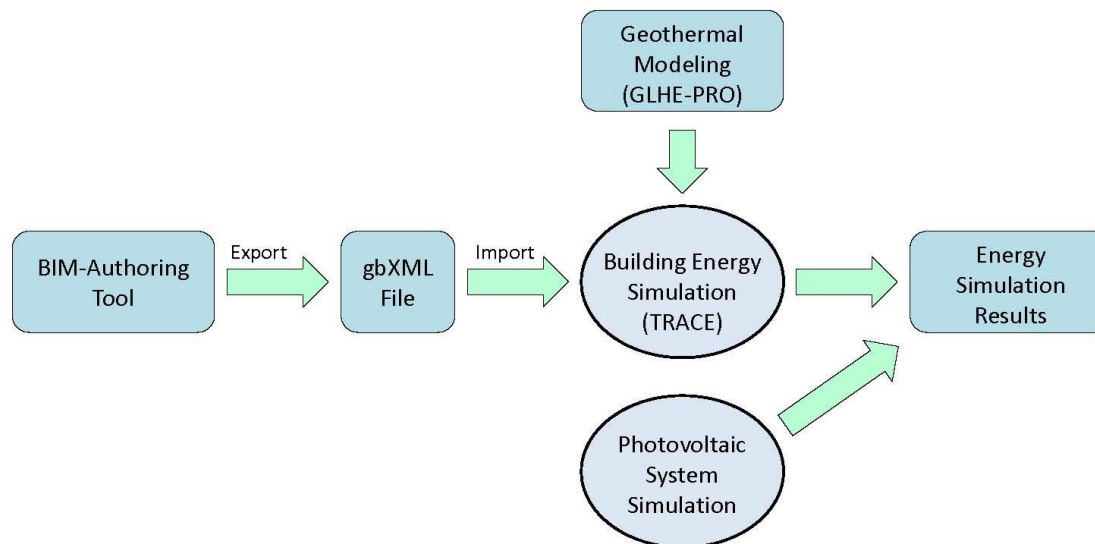


Figure 20. Sequence of Information Transfer for Energy Modeling in the Aspinall Project

Other software programs were used for different system-level analysis for the Wayne Aspinall project. In order for TRACE to correctly calculate the performance of the geothermal systems, separate sizing and modeling of the geothermal loop needed to be performed using GLHE-PRO and then referenced by the whole building energy model in TRACE. Integrated Environmental Solutions Virtual Environment (IES <VE>) was also used for the daylighting and comfort analysis, and Autodesk Ecotect aided the design of the photovoltaic system. For these efforts separate models from the BIM were created in order to capture the building geometry, since that was determined to be more suitable by allowing more rapid changes to the geometry than by importing all the geometry of the building, much of which was unrelated to the design of those particular areas. Additional analysis using WUFI and THERM was also required to calculate the thermal performance of the upgrades to some existing building components, and there are currently no workflows directly from a BIM to these tools.

The energy modeling performed for the project concluded that 63.8 percent energy cost savings over the ANSI/ASHRAE/IESNA Standard 90.1-2007 baseline, not including the renewable energy production of the building, were achievable to meet the goals stated earlier. The building in fact achieved 68.7 percent energy cost savings over the baseline by 2014.

## 5.2 Edith Green-Wendell Wyatt Federal Building

*Note: This case study has not been updated since 2012.*

The energy modeling processes utilized for the Edith Green-Wendell Wyatt (EGWW) Federal Building are examples of how a process may be implemented on a project to view and process BIM data to decrease the time required to perform the modeling inputs required for energy simulation of a high-performance building.

The EGWW Federal Building, constructed in 1974, is an 18-story office tower with two basement levels located in Portland, OR. It includes over 525,000 square feet of space for 24 different government agencies. The American Recovery and Reinvestment Act authorized a \$141.5 million partial modernization of the existing building, including renovation of the interior spaces, facade, and building energy systems. The project had three primary energy-related goals: 1) achieve a specified kbtu/ft<sup>2</sup>/year Energy Use Intensity (EUI), 2) qualify for The Energy Trust of Oregon Incentives, and 3) achieve LEED certification. It was determined through initial energy modeling that achieving the specified EUI was the most stringent goal.

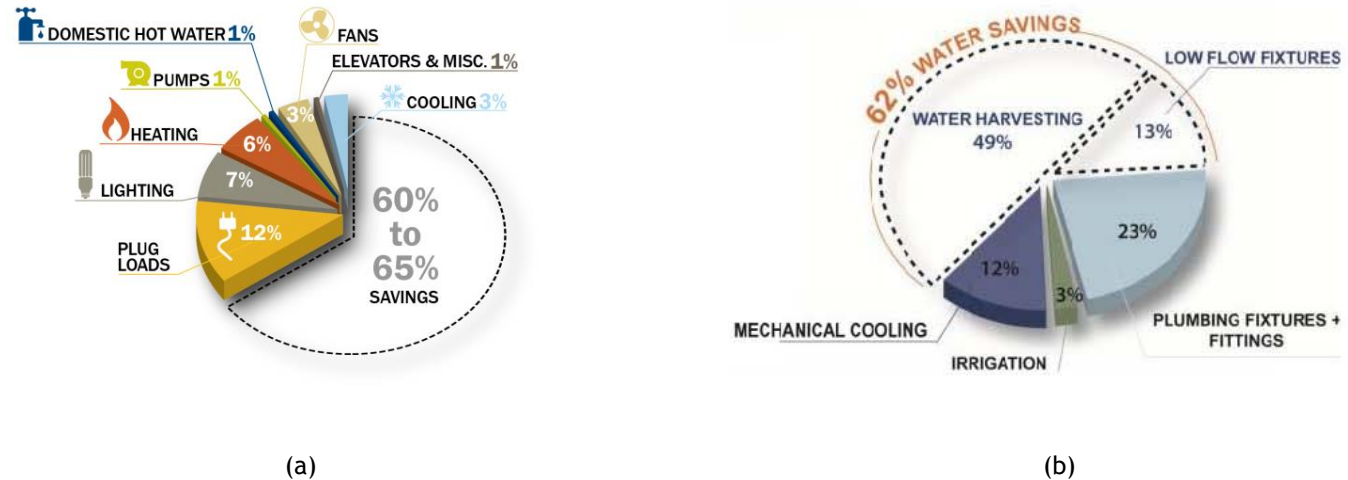


Figure 21. Energy Modeling of the EGWW Federal Building Indicated (a) 60-65% Energy Savings and (b) 62% Water Savings Compared to a Conventional Office Building<sup>xxvii</sup>

The major new building HVAC system consists of radiant heating and cooling with Dedicated Outdoor Air Systems (DOAS). Early in the design, comparisons were made to optimized VAV systems and due to the long building lifetime considered, the radiant panel systems were determined to present the lowest life cycle costs and met the GSA criteria. Workarounds were utilized in eQuest to modify the space temperature setpoint assumed to capture the radiant effects of the cooling system, and referenced methodology that is contained in the newer ANSI/ASHRAE/IES Standard 90.1-2010 Appendix G. This system, when combined with the other building energy efficiency measures, is expected to reduce the building's overall annual energy consumption by between 60 and 65 percent. The building also contained a data center, which was analyzed separately and not included in the whole building energy model due to its standalone energy consumption.

The building energy efficiency measures include:

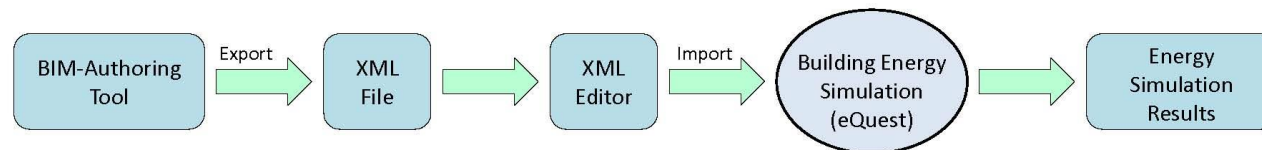
- Radiant heating and cooling with DOAS
- Building envelope optimized for daylighting and thermal efficiency by minimizing glazing to 40 percent of the overall wall area and through use of high performance double glazed windows, external shading devices, and light reflectors
- Daylighting controls with higher ceilings to increase daylight penetration and distribution of electric lighting
- New elevators with destination dispatch and regenerative energy technology features
- Reduction in building "plug" loads through use of LED task lighting, consolidation of appliances and use of energy-efficient units, power management settings, and "phantom" load management



- Approximately 0.6 Watts/ft<sup>2</sup> average lighting power demand across the building (does not include impact of occupancy and daylighting controls) via use of both high-efficiency fluorescent and LED technology
- Photo voltaic panels (PV) on new canopy roof, expected to produce up to 5 percent of the building's annual electric energy usage

A rainwater harvesting system for the new roof canopy was also added to reduce city water consumption for non-potable end uses such as toilet and urinal flushing and landscape irrigation. Low-flow plumbing fixtures were also utilized.

The design team utilized an XML data export from the BIM to initially extract building envelope geometry. The XML files were then edited directly to provide any additional required building geometry specification as well as spatial information, schedules, and system assignments. Finally, the XML files were imported into e-Quest, where the system and plants were modeled to comprise a whole building energy simulation. The team found that this approach was optimal, since they chose to use custom XML information that could be input quicker than in eQuest directly, since that software does not provide the library and template functionality that is included in some other energy analysis programs. In general, the modeling consisted of a simplified core-and-shell model and detailed floor-level models which were completed as the design was completed for individual floors. Once a process was clearly defined for information transfer from BIM to an XML file and then to eQuest, the design team estimated that approximately 100 labor hours were saved by transferring the building geometry from BIM, with even more savings found in inputting details in XML in lieu of eQuest.



**Figure 22. Sequence of Information Transfer for Energy Modeling in the EGWW Project**

The architectural BIM was also leveraged to analyze the impact of surrounding buildings in the city on the shading and solar insolation of the building. As a result, facade changes were made based on the impact of the afternoon sun on the building.

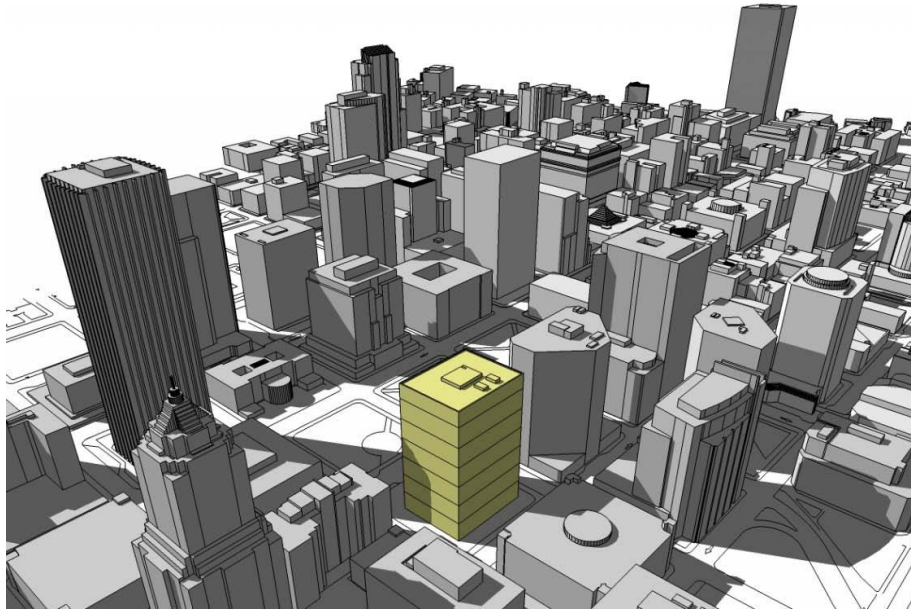


Figure 23. The Impact of Surrounding Structures on the Thermal Performance of the EGWW Federal Building was Studied Using BIM Data<sup>xxviii</sup>

The team maintained a central “matrix” document listing assumptions and details that needed to be coordinated across the different design stakeholders. This facilitated valuable coordination that allowed the team to understand what information was needed from each party and when. The document format presented all information clearly such that all parties could understand the information given their technical knowledge of the various subjects. The team also provided extensive feedback and recommendations to the BIM vendor to help them continuously improve their product.

### 5.3 Peter W. Rodino Federal Building

*Note: This case study has not been updated since 2012. There have been significant changes to the construction project scope since this case study was written. However, the lessons learned from the original scope and energy modeling remains valid.*

The energy modeling processes utilized for the Peter W. Rodino Federal Building show how multiple energy modeling platforms may be used in an integrated fashion to simulate the effect of non-standard building construction and system interaction and provide for exceptional calculation methodology under LEED NC (New Construction).

Originally constructed in 1968, the Rodino Federal Building is located in downtown Newark, NJ and is the largest federal building in the State, comprising nearly 527,000 square feet over 16 stories. The American Recovery and Reinvestment Act authorized a \$146 million modernization of the existing building, which had not been updated significantly throughout its 41-year history. The design-build upgrade project consists of construction of a new glass curtain wall over the existing precast concrete building envelope, renovation of interior spaces, upgrades to high-performance lighting systems, complete abatement of asbestos materials for the entire building, and new high-efficiency HVAC and plumbing systems, including new air handling units (AHUs) and central chilled water plant equipment. The new “double-skin” will provide an aesthetic and thermal performance improvement for the building, as well as blast protection. Construction work began in October 2010 and completion is anticipated for Spring 2015.



Figure 24. Rendering of the Rodino Federal Building Modernization Project in Newark, NJ<sup>xxix</sup>

The building includes tenant office space, a cafeteria with kitchen, a parking garage in the basement level, and various support and storage spaces. The major building energy efficiency measures include:

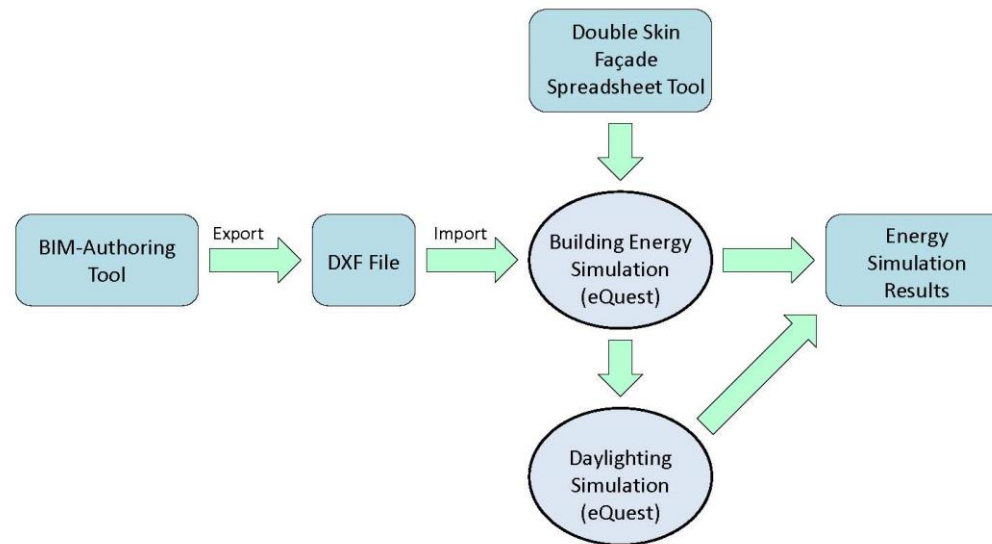
- Double Skin Façade (DSF): Increased envelope U-value, high-performance insulating glass with frit pattern lowers overall solar heat gain coefficient (SHGC) when compared to existing glass
- Reduced Lighting Loads: Overall average building lighting power densities lower when compared to ASHRAE 90.1-2004 values
- Daylight Dimming: Perimeter daylight sensors dim electric light when room level is 50 foot candles (fc) or more
- Demand Control Ventilation: Outdoor air control using carbon dioxide (CO<sub>2</sub>) sensors

- Airside Economizer: Uses outdoor air to cool spaces when possible reducing load on chiller plant; monitored by differential dry bulb conditions
- Chilled Water Delta: Chilled water plant utilizes a 14°F system temperature difference for reduced pumping energy when compared to the ASHRAE 90.1 value of 12°F
- Premium Efficiency Variable Speed Pumps: Higher efficiency motors compared to the baseline standard efficiency motors
- Photovoltaic Power: Rooftop photovoltaic panels sized to provide 60 kW of on-site renewable energy

The major building system modifications include:

- Replacement of the central water-cooled chillers and chilled water piping distribution system, including pumps
- Replacement of cooling towers and condenser water distribution system, including pumps
- Replacement of supplemental air-cooled chiller equipment and pumps for 7x24 systems
- Replacement of building heating hot water pumps and dual temperature pumps serving perimeter Fan Coil Unit systems
- Replacement of tenant constant-volume HVAC systems with Variable Air Volume (VAV) AHUs and new VAV air distribution on certain floors
- Replacement of amenity space HVAC systems (cafeteria, fitness center, etc.), including kitchen exhaust system
- Replacement of perimeter dual temperature system Fan Coil Units on certain floors
- Providing new HVAC system for entryway loggia (including radiant floor heating and cooling)
- Replacement of various 7x24 packaged HVAC systems
- Replacement of main toilet and general exhaust fans
- Providing AHU variable frequency drives and terminal units for tenant spaces on certain floors

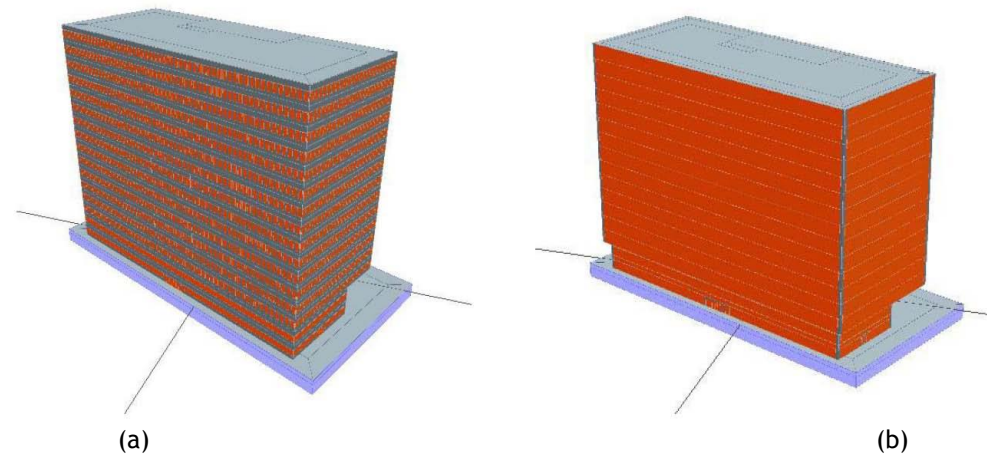
A rainwater harvesting system was also added to reduce city water consumption for cooling tower make-up (non-potable) water end uses, as well as a solar thermal hot water system to reduce natural gas usage for service hot water heating for certain floors of the building.



**Figure 25. Sequence of Information Transfer for Energy Modeling in the Rodino Project**

The Rodino building was modeled to simulate energy performance in order to confirm achievable Energy and Atmosphere Credit 1 for existing building renovations for LEED certification. This entailed developing models under the guidelines of ANSI/ASHRAE/IESNA Standard 90.1-2004 Performance Rating Method (contained in Appendix G). For this project, the design team utilized eQuest v3.63 to develop the building energy model, including geometry, space use and classification, zoning, and the building systems. The eQuest model utilized exported DXF data from the BIM to initially define the building geometry and thermal zoning.

Two parts of the Performance Rating Method modeling methodology used for the project that differ significantly from that of new construction relate to the envelope and existing-to-remain HVAC systems. Since most of the existing envelope is merely being upgraded, Appendix G allows for those conditions to be modeled reflecting the existing conditions prior to any revisions (except for the loggia space, which is new building area that did not exist previously). Regarding the existing-to-remain HVAC systems, Appendix G requires that both the proposed and baseline building performance must be modeled to reflect the existing conditions of areas and/or systems not modified in the project. These methodologies were identified early in the modeling process and influenced where modeling inputs occurred and when (i.e. since many of the features that impact the building's energy use were existing or not in the scope of work for the project, the BIM could not be used for energy modeling directly).



**Figure 26. Rodino Federal Building Energy Models for (a) Performance Rating Method Baseline and (b) Proposed Design with Double Skin Facade<sup>xxx</sup>**

Integrating the performance of the DSF into the energy modeling presented some challenges for the design team. The DSF reduces solar gain in perimeter spaces, with motorized louvers to ventilate the cavity between the overcladding and the existing facade. The louvers are controlled according to the outside air temperature (i.e. they are closed during the winter to allow the cavity space temperature to increase and reduce heat loss from the perimeter spaces to the outdoors). First, the design team partnered with a consultant to fully understand the thermal benefits of the DSF wall cavity during heating and cooling. The consultant utilized a proprietary spreadsheet-based tool to provide information on the airflow and temperatures that may be expected within the cavity for the 8760 hours required by the whole building energy model. This data was imported into the eQuest model using the software's "sunspace" functionality, which is an additional layer of construction that allows a number of features such as temperature to be specified and solar gains to be passed to the perimeter spaces in the energy model. This process allowed for the hourly cavity temperatures to be integrated into the model using an unmetered energy schedule in order to control the cavity (sunspace in eQuest) temperature and account for the DSF benefit for the perimeter spaces. One drawback of this approach is that eQuest does not allow daylight dimming to be calculated for spaces that include a sunspace. Therefore a separate eQuest model was created that was identical to the baseline model but with glazing and lighting characteristics from the proposed model to quantify the effect of the daylight dimming system on the lighting energy use of the building. This lighting energy use was assumed in the final proposed building modeling results in order to capture the benefit of the daylight dimming in the LEED calculations.

The GSA also conducted separate BIM-based energy analysis using IES <VE> for the Rodino project in order to validate the assumptions used in the energy model as well as its results. It was initially discovered that when the raw BIM model is exported, a satisfactory model for analysis within the software is not produced. A number of iterations were required involving modification of the BIM model settings before the model could be exported correctly. These corrections to the BIM model were



made using IES guidance together with additional updates regarding some settings within the BIM model for the DSF configuration. Additional geometry updates for the DSF were made directly within the analysis software, as the changes could be made quicker and with better quality than could currently have been made in the BIM model. The geometry errors could have been avoided if the BIM model had been configured for energy modeling during the concept phase. When importing a model it is important that the geometry be correctly prepared to ensure thermal zones are correctly recognized and their boundaries defined within the thermal model.

Since the IES <VE> model was based on a BIM import where every room within the building was individually modeled, more control over the floor areas associated with each activity type was gained. The higher resolution of thermal zoning also contributed to a difference in solar thermal response time between the models due to the mass associated with all of the internal partitions. The inputs used in the preparation of the eQuest model were replicated in the IES <VE> model as much as possible in an attempt to keep the output similar. It was not possible to match all the inputs exactly, either due to differences in the geometry complexity, calculation methods, and software input options. For example, the DSF was modeled using the IES <VE> bulk airflow module, Macroflo. Using Macroflo, the IES <VE> simulation was able to include the effects of air movement passing through the outer skin, by modeling the cavity as a free-floating zone without any level of space conditioning. This cavity was split at each floor level and by each facade orientation. The resulting temperature is affected by the conduction gains from the perimeter office zones, conduction to outside, solar gain, and from air exchanges between the zones representing the cavity. This stimulates the buoyancy effects and allows the model to represent the temperature difference up through the facade.

The project's goal is to achieve a LEED Silver rating and the energy modeling confirmed that that building design incurs 29 percent less energy cost than the ANSI/ASHRAE/IESNA Standard 90.1-2004 baseline, and will earn 8 LEED EA Credit 1 points to help achieve that goal. The separate IES <VE> modeling calculated a 24 percent energy cost reduction. Overall, the separate analyses results are comparable and demonstrate similar trends between the dominant energy loads within the building. The main characteristics that caused the differences in the model results include the granularity of the building geometry and zoning, elevator and service water heating inputs, modeling of the pumping systems, and modeling of the DSF.



## Conclusion

The world of BIM-based energy simulation is continuing to develop. The GSA has identified that improving the energy performance of its building inventory is one of its highest priorities over the next several decades. While there is a wide variety of technologies available to GSA associates and consultants to support BIM-based energy simulation, significant limitations and challenges still exist. The building industry is currently very inconsistent in terms of adopting the exportation of data from BIMs to analysis software. Although most parties agree that there is much potential in the process, variables such as the type of software, type of analysis being performed, level of experience of the modeler, physical properties of the building, and personal preferences in terms of workflow are currently dictating the level of adoption. The continuing goal is to develop a seamless, tested, and reliable interface between BIM and analysis tools. Until that goal becomes reality, building designers and modelers need to be diligent in their data extraction methods and continue to identify unique software solutions that meet the project requirements. The GSA is committed to working with the industry to develop new software technologies, design, construction, and operational strategies, and user functionality to support its environmental performance goals. This Guide is a step in that direction, and GSA welcomes industry collaboration to improve current and future design, construction, and operational requirements that support a sustainable building lifecycle.



## Acknowledgements

The development of this version of the PBS Building Information Modeling Guide has taken a collaborative and cumulative effort from a cadre of consultants and a number of GSA associates. Significant contributors are listed below:

### GSA

Calvin Kam, Ph.D., Former National 3D-4D-BIM Program Manager  
Charles Matta, FAIA, Deputy CIO, GSA Office of Public Buildings IT Services  
Ilana Hellmann, P.E., LEED AP, National BIM Program Expert, GSA Office of Public Buildings IT Services  
Martin Weiland, P.E., Mechanical Engineer, Expert Resources, Public Buildings Service  
Patricia Cheng, PBS Office of the Chief Greening Officer  
Peggy Yee, Ph.D., Former Program Expert, National 3D-4D-BIM Programs  
Richard Gee, LEED AP, GSA Great Lakes Region

### GSA Consultants

Benjamin Welle, P.E., C.E.M., LEED AP, Visiting Fellow to GSA, Stanford University Center for Integrated Facility Engineering (CIFE), Stanford, CA  
Caroline Clevenger, P.E., RA, LEED AP, Visiting Fellow to GSA, Stanford University Center for Integrated Facility Engineering (CIFE), Stanford, CA  
Frank Nemia, PE, Engineering Design Principal, KlingStubbins  
Michael Schwarz, PE, LEED AP BD+C, Senior Mechanical Engineer, KlingStubbins  
Sarah Vekasy, AIA, LEED AP, Associate, KlingStubbins  
Stephen DeVito, Project Technology Specialist, Procon Consulting  
The Edith Green Wendell Wyatt Federal Building Project Team  
The Peter W. Rodino Federal Building Project Team  
The Wayne Aspinall Federal Building Project Team



For further information about this GSA BIM Guide 05 - Energy Performance or to submit comments or questions, please visit the National 3D-4D-BIM webpage at <http://www.gsa.gov/bim>. Note that this document may not be completely accessible. For assistance, please contact [BIM@gsa.gov](mailto:BIM@gsa.gov).



- <sup>i</sup> “Public Buildings Service.” *U.S. General Services Administration*, February 2015. <<http://www.gsa.gov/portal/content/104444>> (4 May 2015).
- <sup>ii</sup> “Mission and Priorities.” *U.S. General Services Administration*, February 2015. <<http://www.gsa.gov/portal/content/100735>> (4 May 2015).
- <sup>iii</sup> “GSA Properties Overview.” *U.S. General Services Administration*, March 2015. <<http://www.gsa.gov/portal/category/21099>> (4 May 2015).
- <sup>iv</sup> Renderings courtesy of Julie Snow Architects.
- <sup>v</sup> “Understanding the Energy Modeling Process: Simulation Literacy 101.” BuildingGreen, 2003. <[http://www.buildinggreen.com/features/mr/sim\\_lit\\_101\\_2.cfm](http://www.buildinggreen.com/features/mr/sim_lit_101_2.cfm)> (8 May 2015).
- <sup>vi</sup> Haves, P. 1999. “Overview of Diagnostic Methods.” Paper presented at Diagnostics for Commercial Buildings: From Research to Practice, San Francisco, CA, June 16-17. <<http://poet.lbl.gov/diagworkshop/proceedings>> (8 May 2015).
- <sup>vii</sup> Friedman, H., and Mary Ann Piette. *Comparative Guide to Emerging Diagnostic Tools for Large Commercial HVAC Systems*. Sacramento, CA: California Energy Commission, 2001. <<http://eetd.lbl.gov/node/52146>> (8 May 2015).
- <sup>viii</sup> O’Neill, Z., Madhusudana Shashanka, Xiufeng Pang, Prajesh Bhattacharya, Trevor Bailey, and Philip Haves. 2011. “Real Time Model-based Energy Diagnostics in Buildings.” Paper presented at Building Simulation 2011: 12<sup>th</sup> Conference of International Building Performance Simulation Association, Sydney, Australia, November 14-16. <[http://www.ibpsa.org/proceedings/BS2011/P\\_1251.pdf](http://www.ibpsa.org/proceedings/BS2011/P_1251.pdf)> (8 May 2015)
- <sup>ix</sup> Pang, X., Prajesh Bhattacharya, Zheng O’Neill, Philip Haves, Michael Wetter, and Trevor Bailey. 2011. “Real-time Building Energy Simulation using EnergyPlus and the Building Controls Virtual Test Bed.” Paper presented at Building Simulation 2011: 12<sup>th</sup> Conference of International Building Performance Simulation Association, Sydney, Australia, November 14-16. <[http://www.ibpsa.org/proceedings/BS2011/P\\_1924.pdf](http://www.ibpsa.org/proceedings/BS2011/P_1924.pdf)> (8 May 2015)
- <sup>x</sup> Construction Users Roundtable. *Collaboration, Integrated Information, and the Project Lifecycle in Building Design and Construction and Operation*, WP-1202. Cincinnati, OH:CURT, 2004. <<http://codebim.com/wp-content/uploads/2013/06/CurtCollaboration.pdf>> (8 May 2015).
- <sup>xi</sup> The American Institute of Architects. *Integrated Project Delivery: A Guide*. Washington, DC: AIA, 2007. <[http://info.aia.org/SiteObjects/files/IPD\\_Guide\\_2007.pdf](http://info.aia.org/SiteObjects/files/IPD_Guide_2007.pdf)> (8 May 2015).



- <sup>xii</sup> Turner, C., and Mark Frankel. *Energy Performance for LEED for New Construction Building, Final Report*. Washington, DC: U.S. Green Building Council, 2008.  
<<http://www.usgbc.org/Docs/Archive/General/Docs3930.pdf>> (8 May 2015).
- <sup>xiii</sup> Maile, T., Martin Fischer, and Vladimir Bazjanac. *Building Energy Performance Simulation Tools - a Life-Cycle and Interoperable Perspective, CIFE Working Paper #WP107*. Stanford, CA: 2007.  
<<http://cife.stanford.edu/sites/default/files/WP107.pdf>> (8 May 2015).
- <sup>xiv</sup> Id.
- <sup>xv</sup> “Main Page.” *Karlsruhe Institute of Technology*, July 2013.  
<[http://www.ifcwiki.org/index.php/Main\\_Page](http://www.ifcwiki.org/index.php/Main_Page)> (8 May 2015).
- <sup>xvi</sup> “Model View Definition Summary.” *buildingSMART International*. <<http://www.buildingsmart-tech.org/specifications/ifc-view-definition>> (8 May 2015).
- <sup>xvii</sup> “XML Essentials.” *World Wide Web Consortium*. <<http://www.w3.org/standards/xml/core>> (8 May 2015).
- <sup>xviii</sup> “Welcome.” *gbXML.org*. <<http://www.gbxml.org/>> (8 May 2015).
- <sup>xix</sup> “summary.” *buildingSMART International*. <<http://www.buildingsmart-tech.org/specifications/ifcxml-releases>> (8 May 2015).
- <sup>xx</sup> Bazjanac, V. 2002. “Early Lessons From Deployment of IFC Compatible Software.” Paper presented at European Community Product and Process Modeling Conference, Portoroz, Slovenia.  
<<http://eetd.lbl.gov/node/52140>> (8 May 2015).
- <sup>xxi</sup> Maile and Bazjanic, supra note 4.
- <sup>xxii</sup> Id.
- <sup>xxiii</sup> Hietanen, Jiri. Space boundaries in IFC R2.0. BLIS project. VTT Building Technology, 2000.
- <sup>xxiv</sup> Bazjanac, V. Lawrence Berkeley National Laboratory (LBNL). ISG Presentation on Space Boundaries in Budapest, Hungary. 2007.
- <sup>xxv</sup> Graphic courtesy of Westlake Reed Leskosky.
- <sup>xxvi</sup> Graphic courtesy of Westlake Reed Leskosky.
- <sup>xxvii</sup> Graphics courtesy of SERA.
- <sup>xxviii</sup> Graphic courtesy of SERA.
- <sup>xxix</sup> Graphic courtesy of KlingStubbins.
- <sup>xxx</sup> Graphics courtesy of KlingStubbins.