



Contract Holder

NSN Contemporary Seating & Tables



Contract #: 47QSMA19A08NA
Award Date: May 14, 2019

Indiana
FURNITURE

Table of Contents

Contemporary Seating & Tables	3
Finishes & Textiles	3
Swivel Seating	4
High Back, Mid Back	
Guest Seating	6
Open Arm	
Lounge Seating	7
Chair, Two Seat Sofa, Three Seat Sofa	
Occasional Tables	10
Corner, Coffee, Console	
Ordering Information	11



Contemporary Finishes & Textiles

Finishes



Williamsburg Cherry
Woodgrain Laminate

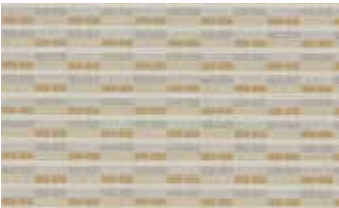


Sugar Maple
Woodgrain Laminate

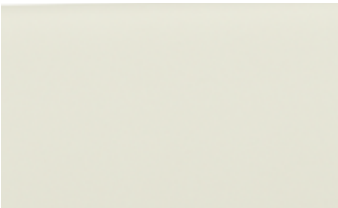


Silver
Metal Powdercoat Finish

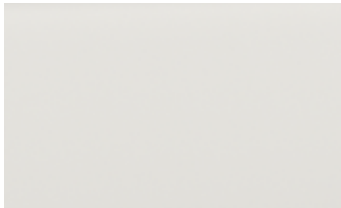
Textiles



Patterned Fabric



White Vinyl



White Leather



Tan Fabric



Tan Vinyl



Tan Leather



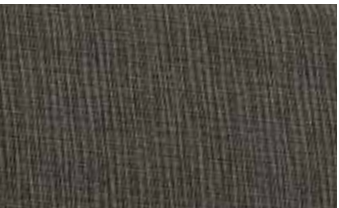
Dark Grey Fabric



Dark Grey Vinyl



Dark Grey Leather



Black Fabric



Black Vinyl



Black Leather

High Back

Swivel Seating



NSN#: 7110-01-679-2679
Patterned Fabric



NSN#: 7110-01-679-2676
Tan Fabric



NSN#: 7110-01-679-2671
Dark Grey Fabric



NSN#: 7110-01-679-2672
Black Fabric



NSN#: 7110-01-679-2665
White Vinyl



NSN#: 7110-01-679-2662
Tan Vinyl



NSN#: 7110-01-679-2659
Dark Grey Vinyl



NSN#: 7110-01-679-2656
Black Vinyl



NSN#: 7110-01-679-2653
White Leather



NSN#: 7110-01-679-2650
Tan Leather



NSN#: 7110-01-679-2647
Dark Grey Leather



NSN#: 7110-01-679-2673
Black Leather



Shown in White
Leather

Dimensions:
26"W x 26"D x 43-48"H

Mid Back

Swivel Seating



NSN#: 7110-01-679-2702
Patterned Fabric



NSN#: 7110-01-679-2701
Tan Fabric



NSN#: 7110-01-679-2700
Dark Grey Fabric



NSN#: 7110-01-679-2699
Black Fabric



NSN#: 7110-01-679-2697
White Vinyl



NSN#: 7110-01-679-2698
Tan Vinyl



NSN#: 7110-01-679-2696
Dark Grey Vinyl



NSN#: 7110-01-679-2695
Black Vinyl



NSN#: 7110-01-679-2682
White Leather



NSN#: 7110-01-679-2681
Tan Leather



NSN#: 7110-01-679-2680
Dark Grey Leather



NSN#: 7110-01-679-2678
Black Leather



Shown in the
Patterned Fabric

Dimensions:
26"W x 26"D x 37-42"H



Guest Seating

Open Arm



NSN#: 7110-01-679-2624
Patterned Fabric



NSN#: 7110-01-679-2623
Tan Fabric



NSN#: 7110-01-679-2694
Dark Grey Fabric



NSN#: 7110-01-679-2691
Black Fabric



Shown in
Dark Grey Fabric

Dimensions:
24½"W x 23½"D x 33½"H



NSN#: 7110-01-679-2689
White Vinyl



NSN#: 7110-01-679-2692
Tan Vinyl



NSN#: 7110-01-679-2690
Dark Grey Vinyl



NSN#: 7110-01-679-2686
Black Vinyl



NSN#: 7110-01-679-2685
White Leather



NSN#: 7110-01-679-2687
Tan Leather



NSN#: 7110-01-679-2704
Dark Grey Leather



NSN#: 7110-01-679-2703
Black Leather



Lounge Seating

Lounge Chair



NSN#: 7110-01-679-2648
Patterned Fabric



NSN#: 7110-01-679-2645
Tan Fabric



NSN#: 7110-01-679-2644
Dark Grey Fabric



NSN#: 7110-01-679-2642
Black Fabric



Shown in
Tan Vinyl

Dimensions:
29"W x 28½"D x 33"H



NSN#: 7110-01-679-2640
White Vinyl



NSN#: 7110-01-679-2638
Tan Vinyl



NSN#: 7110-01-679-2636
Dark Grey Vinyl



NSN#: 7110-01-679-2635
Black Vinyl



NSN#: 7110-01-679-2629
White Leather



NSN#: 7110-01-679-2628
Tan Leather



NSN#: 7110-01-679-2630
Dark Grey Leather



NSN#: 7110-01-679-2627
Black Leather

Lounge Seating

Two Seat Sofa



Shown in
Dark Grey Vinyl

Dimensions:
51"W x 28½"D x 33"H



NSN#: 7110-01-679-2632
Patterned Fabric



NSN#: 7110-01-679-2622
Tan Fabric



NSN#: 7110-01-679-2631
Dark Grey Fabric



NSN#: 7110-01-679-2625
Black Fabric



NSN#: 7110-01-679-2626
White Vinyl



NSN#: 7110-01-679-2669
Tan Vinyl



NSN#: 7110-01-679-2666
Dark Grey Vinyl



NSN#: 7110-01-679-2663
Black Vinyl



NSN#: 7110-01-679-2661
White Leather



NSN#: 7110-01-679-2657
Tan Leather



NSN#: 7110-01-679-2654
Dark Grey Leather



NSN#: 7110-01-679-2651
Black Leather

Lounge Seating



Shown in
White Vinyl

Dimensions:
73"W x 28½"D x 33"H



NSN#: 7110-01-679-2658
Patterned Fabric



NSN#: 7110-01-679-2655
Tan Fabric



NSN#: 7110-01-679-2652
Dark Grey Fabric



NSN#: 7110-01-679-2649
Black Fabric



NSN#: 7110-01-679-2646
White Vinyl



NSN#: 7110-01-679-3320
Tan Vinyl



NSN#: 7110-01-679-2643
Dark Grey Vinyl



NSN#: 7110-01-679-2641
Black Vinyl



NSN#: 7110-01-679-2639
White Leather



NSN#: 7110-01-679-2637
Tan Leather



NSN#: 7110-01-679-2634
Dark Grey Leather



NSN#: 7110-01-679-2633
Black Leather

Occasional Tables

Corner



NSN#: 7110-01-679-2664
Williamsburg Cherry Woodgrain Laminate



NSN#: 7110-01-679-2660
Sugar Maple Woodgrain Laminate

Corner
Table Dimensions:
24"W x 24"D x 20"H

Coffee



NSN#: 7110-01-679-2668
Williamsburg Cherry Woodgrain Laminate



NSN#: 7110-01-679-2667
Sugar Maple Woodgrain Laminate

Square Coffee
Table Dimensions:
36"W x 36"D x 15"H



NSN#: 7110-01-679-2674
Williamsburg Cherry Woodgrain Laminate



NSN#: 7110-01-679-2670
Sugar Maple Woodgrain Laminate

Rectangle Coffee
Table Dimensions:
48"W x 22"D x 15"H

Console



NSN#: 7110-01-679-2677
Williamsburg Cherry Woodgrain Laminate



NSN#: 7110-01-679-2675
Sugar Maple Woodgrain Laminate

Console
Table Dimensions:
48"W x 18"D x 28"H

Ordering Information

GSA Global Supply accepts your government purchase card or direct billing through your Activity Address Code (AAC) or DoDAAC. For information on obtaining an AAC or DoDAAC, contact our Order Management Office at (800) 927-7622 or ordermgmt@gsa.gov.

Online: www.GSAGlobalsupply.gsa.gov

Available 24/7, the GSA Global Supply website gives you access to hundreds of thousands of tools, office supplies, computer products, furniture and other items.

Telephone: (800) 525-8027 | DSN 465-1416

Available 7:30 a.m. to 8 p.m. (ET), Monday through Friday.

Fax Orders: (800) 856-7057

Available 24/7. You will receive order confirmation via fax.

FEDSTRIP/MILSTRIP:

We're integrated with orders routed from DLA Transaction Services. We're also happy to accept your Standard Form 344 or DD Form 1348 by mail at:

GSA Global Supply (QSDLBB)
819 Taylor St., Room 6A00
Fort Worth, TX 76102

Please ensure that a contact person and a commercial telephone number accompany all orders to expedite any necessary clarification. The office cannot return DSN or Autovon calls. For FEDSTRIP/MILSTRIP orders, please enter the name and phone number in the "Mark For" section of your requisition.

Please be sure to include a supplemental address if the signal code (Block 51 of Standard Form 344) is anything other than "A". Please also verify that your supplemental address is accurate and includes a telephone number and/or point of contact if possible.

Additional Ordering Options:

GSA Advantage!®: www.gsaadvantage.gov

Available 24 hours a day, seven days a week. The same user ID and password can be used on both the GSA Global Supply website and GSA Advantage! The contractor field will indicate "GSA Global Supply."

DOD EMALL:

Available 24/7. All GSA Global Supply items appear on the Defense Logistics Agency's DOD EMALL site. Customer must use their DoDAAC to purchase GSA items. The supplier field will indicate "GSA MILSTRIP" if the product is offered by GSA Global Supply.

Contract Prices:

Please refer to www.globalsupply.gsa.gov for the most current pricing.

Delivery Conditions:

Delivery to a location with a loading dock.



Ordering Information

Installation:

Installation available for CONUS only. The product ships to a location that has a loading dock. If inside delivery or installation is required please be sure to note so on the order form. If ordering online, complete your order and then email furniture@gsa.gov to request inside delivery or installation. Additional charges may apply.

Warranty:

Subject to the limitations set forth in this warranty, Indiana Furniture Industries, Inc. (“Indiana Furniture”) warrants to the original purchaser all product in this brochure (“Product”) to be free from defects in material and workmanship given normal use for a twelve year period from the date of manufacture. During the applicable warranty period, Indiana Furniture, as its sole obligation, will repair or replace (in Indiana Furniture’s sole discretion) any Product, part, or component covered by this warranty and sold after January 22, 2019, which fails under normal use as a result of a defect in material or workmanship. Normal use is defined as the equivalent of a single shift, 40-hour work week. Indiana Furniture will repair or replace the defective Product, part, or component with a comparable Product, part or component.

Warranty periods are limited for certain Products and parts as follows:

12-year Warranty (from the date of manufacture)

- Seating Mechanisms
- Laminates
- Casters and Glides

5-year Warranty (from the date of manufacture)

- Pneumatic Cylinders
- Textiles, Foam, and Decorative Trim

THIS WARRANTY DOES NOT COVER:

- Damage caused by a carrier or third party
- Normal or routine wear and tear
- Appearance, durability, quality, behavior, colorfastness or any other attribute of customer’s own materials or any non-standard Indiana Furniture material (including Maharam, Momentum, Mayer, UltraFabrics) specified by the customer and applied to a Product
- Color, grain or texture of wood, laminate and other covering materials
- Changes in wood or fabric color due to aging or exposure to light

Resolution of Problems with Orders:

The GSA National Customer Service Center (NCSC) is the point to which all discrepancy reports (as well as quality deficiency reports) should be addressed for processing:

GSA National Customer Service Center (6FR)
1500 East Bannister Road
Kansas City, MO 64131
Toll-Free Phone: (800) 488-3111
DSN: 465-1416

