



Welcome to the Public Scoping Meeting for the  
**Grand Portage, MN LPOE**  
**Modernization and Expansion Project**  
**Public Scoping Meeting**

October 5, 2023

**TO CONNECT YOUR AUDIO:**

Click 'Join with Computer Audio' or 'Join Audio by Computer' on the screen that pops up when you enter the meeting. Or, click the 'Join Audio' button on the bottom left hand corner of the Zoom window and follow the prompts to join with Computer Audio.

If you do not hear anyone speaking after 2 minutes, click 'Test Speaker and Microphone' under 'Join Audio' and follow the prompts to determine if your computer is compatible with the 'Computer Audio' feature.

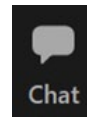
If your computer is not compatible for audio, you can connect with your phone by dialing the following number: 507-473-4847, and entering the following information, making sure to press the pound or # key after each step:

Meeting ID: 889 5436 6939; Attendee ID: *not required (just press # to continue)*; Password: *not required*.

**Note:** Use of vulgar or crass language at any point during the meeting will result in removal.

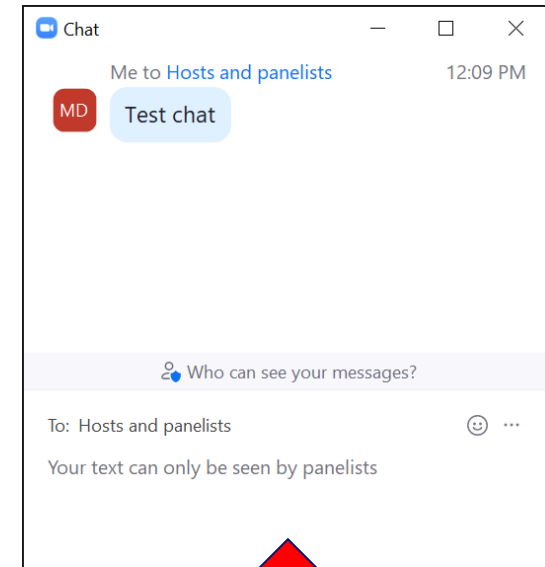
**TECHNICAL SUPPORT:**

If you are experiencing technical issues, please use the chat box.



# Meeting Format and Ground Rules

- ❑ Please enter any questions related to utilizing the Zoom platform into the chat window, such as in the graphic to the right. Please **do not** submit public comments or questions on the project through the chat.
- ❑ All virtual participants will remain muted during the presentation and question and answer session.
- ❑ At the end of the presentation, there will be an opportunity for comments and questions.
  - For those attending in-person, there is a sign-up sheet to speak at the sign-in table. Those attending virtually will be able to sign-up at the end of this presentation.
- ❑ GSA will not be responding to technical questions during today's meeting but will consider them in preparation of the Draft EIS and during project design. GSA will clarify anything presented in this presentation relating to the project, the NEPA or design processes, or opportunities for public participation.
- ❑ A copy of this presentation will be made available at:  
<https://www.gsa.gov/about-us/regions/region-5-great-lakes/buildings-and-facilities/minnesota/grand-portage-land-port-of-entry>



*Note: The meeting is being recorded and will be included in the project's Administrative Record.*

# Meeting Agenda

- ❑ Welcome and Introductions
- ❑ Purpose of Meeting
- ❑ National Environmental Policy Act (NEPA) and National Historic Preservation Act (NHPA)
- ❑ Project Overview, including Purpose of and Need for the Project
- ❑ Description of the Alternatives
- ❑ Representation and Symbolism in Design
- ❑ Next Steps
- ❑ How to Comment
- ❑ Public Comment Session



Grand Portage Land Port of Entry (LPOE), Minnesota

# Project Team Overview

## □ U.S. General Services Administration (GSA)

- Michael Gonczar, Region 5 NEPA Program Manager
- Gary Walker, LPOE Project Manager
- Regina Nally, Regional Historic Preservation Officer

## □ Potomac-Hudson Engineering, Inc. (PHE) and SEARCH, Inc.

- Paul DiPaolo, NEPA Contractor Project Manager (PHE)
- Matthew Piscitelli, Archaeologist, SEARCH
- Jaime Bach, Tribal Engagement Specialist, SEARCH

## □ HGA

- Glenn Waguespack, AIA
- Adaheid Mestad, M.A.

# What is the Purpose of this Meeting?

- ❑ Describe the NEPA and NHPA processes
- ❑ Provide an overview of GSA's project
- ❑ Provide the public an opportunity to comment on the project
- ❑ Inform the public of next steps in the planning process
- ❑ Obtain feedback from the public on potential port design

*GSA is hosting this meeting to provide information about the project with the community. Scoping is an early, open public involvement process intended to help determine which issues the EIS will address. GSA welcomes public input on what resources and issues are important to you.*

# What is the National Environmental Policy Act?



NEPA requires federal agencies to consider the potential impacts to the natural, human, and cultural environment from their proposed actions and disclose the potential impacts in a document that is circulated for public review.



GSA will prepare an EIS per NEPA requirements. The EIS will document potential impacts from implementation of the Proposed Action.



The Grand Portage Band of Lake Superior Chippewa is serving as a Cooperating Agency for the EIS. GSA will prepare the EIS in close collaboration with the Tribe.



NEPA provides the public an opportunity to submit comments on the project at various stages throughout the process, including during the scoping process, and public reviews of the draft and final EIS.



GSA will review all public comments and consider substantive comments in the preparation of the EIS. All comments will be part of the administrative record and be included in the EIS.

# What is the National Historic Preservation Act?



The National Historic Preservation Act (NHPA) is the most comprehensive federal law pertaining to the protection of cultural resources and establishes a program for the preservation of historic properties (i.e., districts, sites, buildings, structures, and objects) throughout the nation.



Section 106 of the NHPA requires GSA to evaluate potential effects on properties listed or eligible for listing in the National Register of Historic Places (NRHP) prior to an undertaking. Properties include historic districts, sites, buildings, structures, or objects including those of traditional religious or cultural importance to an Indian Tribe or Native Hawaiian Organization that meet the NRHP criteria. Currently, no sites within the study area are listed on, or are eligible for listing on, the NRHP.



The Section 106 process is being initiated in conjunction with the NEPA scoping period. Potential consulting parties interested in participating in the consultation process are invited to express their interest during this period. Consulting parties are those that have consultative roles in the Section 106 process.



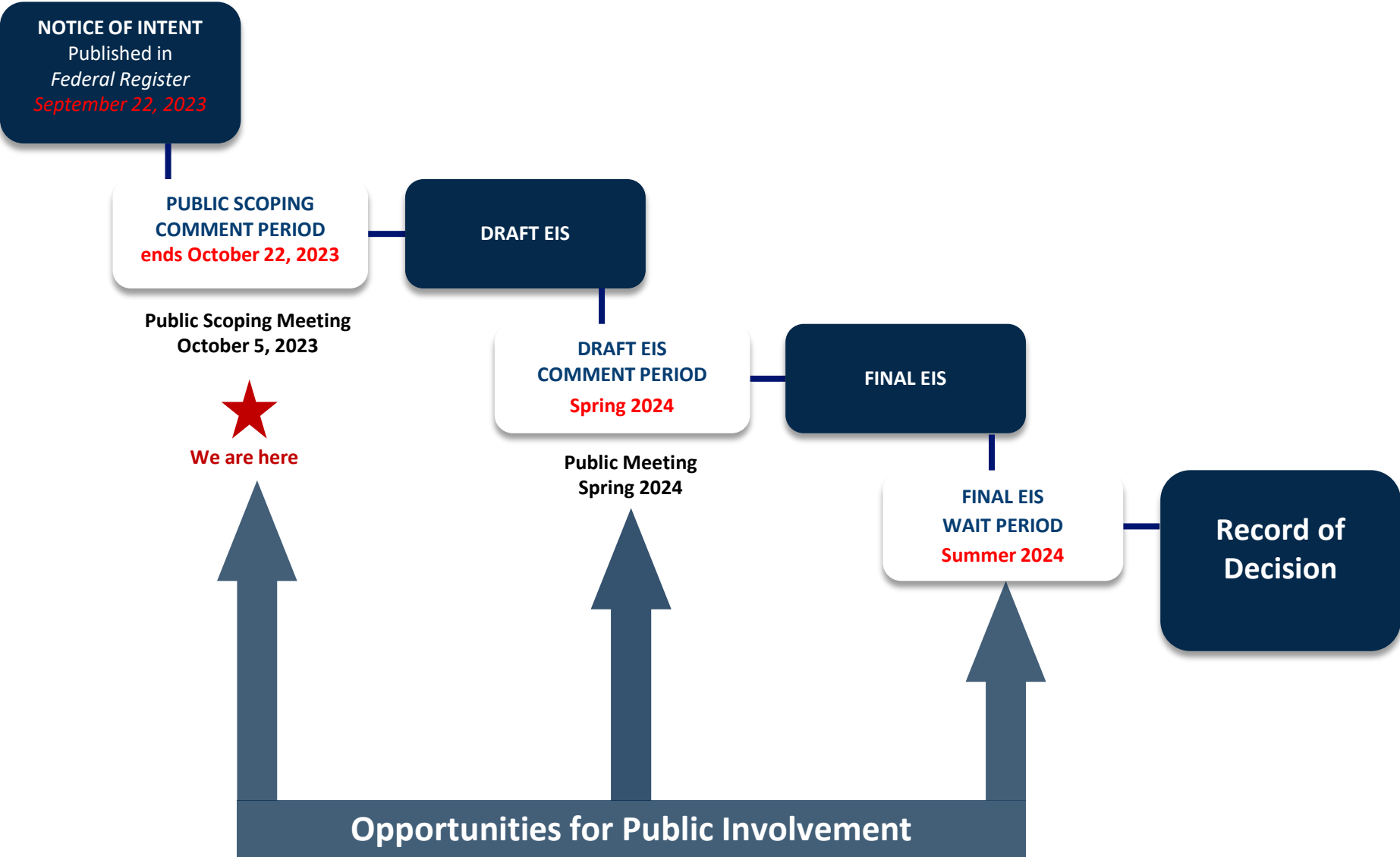
GSA will undergo Section 106 consultation with the Tribal Historic Preservation Officer (THPO). Consultation will be completed prior the completion of the NEPA process (i.e., signature of Record of Decision).

# Tribe as a Cooperating Agency

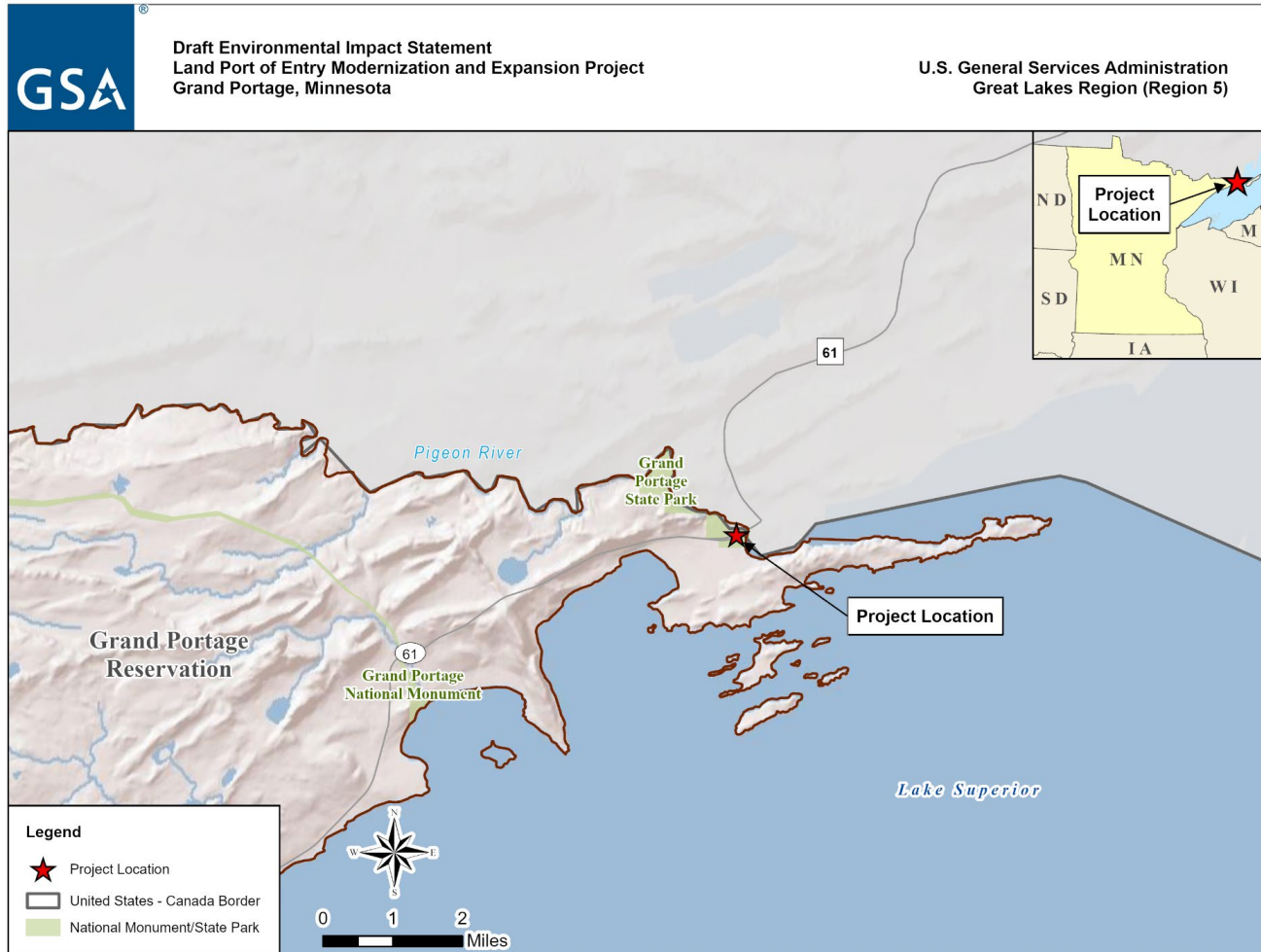
- ❑ Project area is located entirely within the Grand Portage Reservation, within Minnesota Department of Transportation (MnDOT) easement for Highway 61.
- ❑ GSA has entered into a Memorandum of Understanding with the tribe for the tribe to serve as a Cooperating Agency.
- ❑ The tribe is working closely with GSA in preparation of this NEPA document (information exchange, document reviews, meeting participation) to ensure tribal concerns are addressed.
- ❑ GSA will continue to engage and involve the tribe outside of the NEPA process, notably in proposed designs of the port.



# EIS Timeline



# Regional Location



The Grand Portage LPOE was built in 1965 and is located within the Grand Portage Reservation. It serves as a port of entry for vehicles and pedestrians crossing the U.S.-Canada border between Grand Portage and Neening, Ontario. It is a 24/7, full-service facility operated by the U.S. Department of Homeland Security's Customs and Border Protection (CBP).

# Existing Port Overview



# Project Background

- ❑ GSA completed a Feasibility Study in 2019, which determined that the existing structures do not meet square footage needs specified by the Program of Requirements. The Feasibility Study identified three alternatives for expanding and modernizing the port.
- ❑ Following the Feasibility Study, a Program Development Study (PDS) was initiated as the next step in the design process to further refine potential alternatives under consideration.
- ❑ Two reports have been issued that have further refined viable alternatives, in collaboration with the Grand Portage Band of Lake Superior Chippewa.
- ❑ The most recent report (50% PDS) has identified a single alternative under consideration that remains within the MnDOT Highway 61 easement to address concerns with expansion and limit overall disturbance.

# Purpose and Need for Project



**Purpose**: To support CBP's mission by bringing the Grand Portage LPOE operations in line with current land port design standards and operational requirements of CBP while addressing existing deficiencies identified with the ongoing port operations.



**Need**: Improve capacity and functionality of the Grand Portage LPOE to meet future demand while maintaining the capability to meet border security initiatives and to provide for the expeditious and safe inspection of the traveling public.

*The Infrastructure Investment and Jobs Act (2021), also known as the Bipartisan Infrastructure Law, includes \$3.4 billion for GSA to undertake 26 construction and modernization projects at LPOEs nationwide. Most of the U.S.'s LPOEs are outdated and long overdue for modernization. Additionally, the LPOE modernization projects would provide opportunities to incorporate sustainability features into facility design.*

# Proposed Action

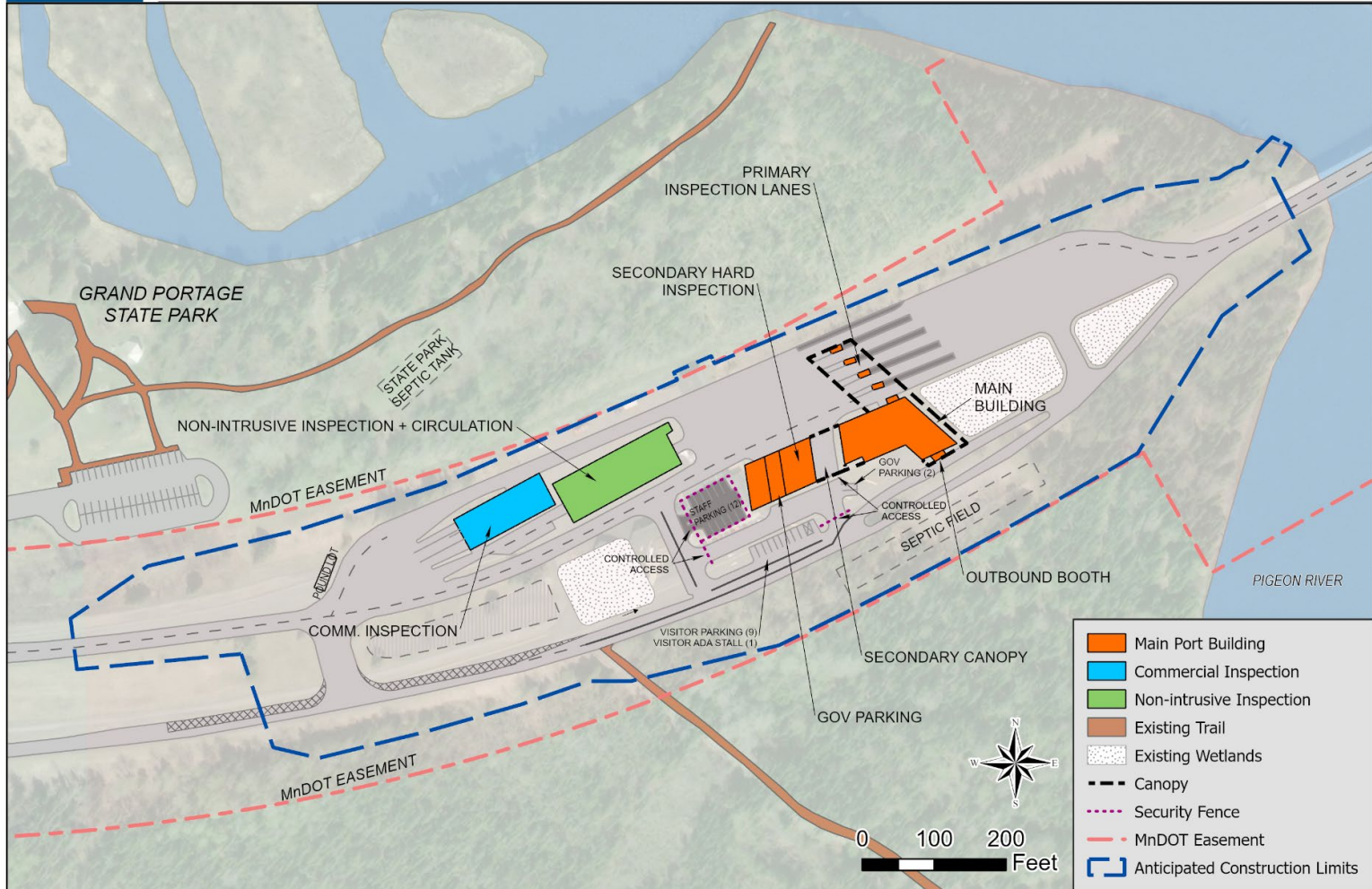
- ❑ Establish property rights agreements as necessary with the Grand Portage Band of Lake Superior Chippewa and MnDOT to expand the LPOE to approximately 8.1 acres.
- ❑ Conduct multi-phased demolition and construction.
- ❑ Construction would include:
  - New commercial inspection building
  - New Main Port Building
  - New primary inspection canopy/booths and secondary hard inspection
  - New non-intrusive inspection (NII) building
  - Renewable energy technologies (solar or geothermal)
  - Upgraded utilities and new paving
- ❑ The Proposed Action would incorporate sustainable, climate-resilient, cyber-secure, and operationally efficient design. GSA would seek to meet or exceed energy and sustainability goals established by federal guidelines and policies, along with industry-standard building codes and best practices.
- ❑ Operations comparable to existing conditions but more efficient.

# Proposed Action



Draft Environmental Impact Statement  
 Land Port of Entry Modernization and Expansion Project  
 Grand Portage, Minnesota

U.S. General Services Administration  
 Great Lakes Region (Region 5)



# Project Alternatives

GSA has preliminarily identified one “**action**” alternative and the “**no action**” alternative to analyze in the EIS:

- **Alternative 1** – Construct the facilities as described in the Alternative assessed in the 50 percent PDS.
- **No Action Alternative** – No construction of a new facility to replace the existing LPOE. Operation of the Grand Portage LPOE would generally remain similar to current conditions, but capacity and efficiency would likely degrade over time. Existing deficiencies would remain or worsen over time and compromise CBP’s mission to protect and secure the nation’s border.



# Resources Analyzed

GSA has preliminarily identified the following resources that will be analyzed in the EIS:

- Cultural Resources
- Geology and Soils
- Water Resources
- Biological Resources
- Air Quality and Climate Change
- Noise
- Traffic and Transportation
- Land Use and Visual resources
- Infrastructure and Utilities
- Human Health and Safety
- Socioeconomics
- Environmental Justice

# Representation and Symbolism In Design



*"We are carried on the turtle's back, symbolic of our earth, center of our life and culture."*



- Past, Present, and Future
- Environment
- Materials
- Resources
- Orientation
- Landscape
- Visitor Gateway
- Art, Colors, Shapes

# Community connections, art, and landscape



COLUMBUS, NEW MEXICO  
RICHTER ARCHITECTS



# Regional history and natural landscape



WARROD, MINNESOTA  
SNOW KREILICH ARCHITECTS



# Regional resources, integrated art, and landscape



DERBY LINE, VERMONT  
HGA ARCHITECTS AND ENGINEERS





How can the new Port of Entry support and respect Grand Portage Anishinaabe community and culture?

If any, what story should this building tell?

# Next Steps



A Notice of Intent was published in the *Federal Register* on September 22 2023, to start the public scoping period.  
Public meeting held October 5, 2023



The public scoping period ends October 22, 2023.



Public scoping comments will be reviewed and considered during the development of the Draft EIS.



A public comment period will begin with the publication of the Notice of Availability in the *Federal Register* for the Draft EIS.



An additional public meeting will be held during the comment period for the Draft EIS.

For project updates, visit: <https://www.gsa.gov/real-estate/gsa-properties/land-ports-of-entry-and-the-bil/bipartisan-infrastructure-law-construction-project/minnesota#grand-portage>

# Public Comments

**Written and verbal comments may be provided tonight.**

- All written and verbal comments will be considered equally and will be part of the administrative record.

**Written comments also can be submitted by either of the two methods below prior to the end of the public comment period (October 22, 2023):**

- By email to: [michael.gonczar@gsa.gov](mailto:michael.gonczar@gsa.gov) (Please include *'Grand Portage LPOE EIS Scoping Comment'* in the subject line of the message.)
- By mail to (must be postmarked by October 22, 2023):

Michael Gonczar

Attn: Grand Portage LPOE EIS

U.S. General Services Administration, Region 5

230 S. Dearborn Street, Suite 3600

Chicago, IL 60604



# Commenting Etiquette

- ❑ Commenters: Say and spell your first and last name at the start of your comment.
- ❑ Be respectful of participants and presenters.
- ❑ Remain quiet while others are speaking.
- ❑ GSA will not respond to your comments and questions during the meeting but will consider them in preparation of the Draft EIS and the larger design process.
- ❑ Verbal comments will be held to a 3-minute time limit.
- ❑ If time allows, participants may be permitted to speak again after all commenters have had the opportunity to speak. Additional comments can also be submitted in writing.
- ❑ A transcription of the meeting will be made, and your comments will be included in the administrative record.



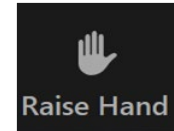
*Thank you!*

# Commenting Session

## VIRTUAL INSTRUCTIONS

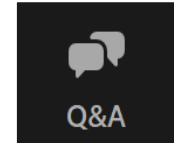
### *Request to speak*

- Click 'Raise Hand' icon on the bottom of screen. For those accessing audio by phone, dial \*9. Wait to be unmuted by the Moderator.
- State your name, affiliation, and city of residence for the record.



### *Submit a Written Comment or Question*

- Click 'Q&A' icon on the bottom of screen. Type your Comment or Question and click send.



**How can the new Port of Entry support and respect Grand Portage Anishinaabe community and culture (important symbols, landscape, meaningful materials, history)?**

**If any, what story should this building tell?**

**Are there any environmental concerns you have with GSA's overall project?**

**Are there any other comments or considerations you would like GSA to consider during the planning process?**