



Contract Holder

INTERIOR FUSION A CERTIFIED SERVICE-DISABLED VETERAN-OWNED SMALL BUSINESS



Table Of Contents

Patient Room Furniture	
Bedside Cabinet	3
Overbed Table	4
Dresser	5
Wardrobe Tower	5
Patient Room Seating	
High Back Patient Chair	6
Patient Recliner	7
Trendelenburg Recliner	9
Glider	11
Exam Stool	11
Single Seat Sleeper	12
Two Seat Sleeper	13
Three Seat Sleeper	14
Waiting Room Seating	
Single Seat Arm Chair	15
Two Seat Chair	16
Three Seat Chair	17
Bariatric Arm Chair	18
Hip Chair	19
Waiting Room Table	
Free Standing End Table	20
Attached End Table	21
Attached Connecting Table	22
Coffee Table	23
Expanded Seating Color Options	24
Expanded Finish Options	26
Pricing	27
Order Information	34



PATIENT ROOM FURNITURE

Bedside Cabinet

Tops and fronts of patient room bedside cabinets are made of Thermoformed Vinyl, the body material is Laminate, and are locking. They feature four dual wheel casters with at least two lockable casters, removable and field replaceable drawers and doors, full extension glides with bumpers to soften the sound of closing, and venting. All drawers also include liners. Coordinating dressers and wardrobe towers are also available.



Single Drawer Bedside Cabinet with Left Door and Gallery Rail 19.75"W x 19.75"D x 30"H

7105-01-682-9730 - Light Maple Wood Finish

7105-01-682-9731 - Platinum Gray Finish

7105-01-682-9732 - Expanded Finish Option

Select any expanded finish shown on page 26.

Email furniture@gsa.gov to add selection to your order.



Single Drawer Bedside Cabinet with Right Door and Gallery Rail 19.75"W x 19.75"D x 30"H

7105-01-682-0156 - Light Maple Wood Finish

7105-01-682-0157 - Platinum Gray Finish

7105-01-682-0158 - Expanded Finish Option

Select any expanded finish shown on page 26.

Email furniture@gsa.gov to add selection to your order.



Single Drawer Bedside Cabinet with Left Door and Spill Groove 19.75"W x 19.75"D x 30"H

7105-01-682-0163 - Light Maple Wood Finish

7105-01-682-0154 - Platinum Gray Finish

7105-01-682-0155 - Expanded Finish Option

Select any expanded finish shown on page 26.

Email furniture@gsa.gov to add selection to your order.



Single Drawer Bedside Cabinet with Right Door and Spill Groove 19.75"W x 19.75"D x 30"H

7105-01-682-0159 - Light Maple Wood Finish

7105-01-682-0160 - Platinum Gray Finish

7105-01-682-0161 - Expanded Finish Option

Select any expanded finish shown on page 26.

Email furniture@gsa.gov to add selection to your order.



PATIENT ROOM FURNITURE

Bedside Cabinet

Tops and fronts of patient room bedside cabinets are made of Thermoformed Vinyl, the body material is Laminate, and are locking. They feature four dual wheel casters with at least two lockable casters, removable and field replaceable drawers and doors, full extension glides with bumpers to soften the sound of closing, and venting. All drawers also include liners. Coordinating dressers and wardrobe towers are also available.



Three Drawer Bedside Cabinet with Gallery Rail **19.75"W x 19.75"D x 30"H**

7105-01-682-9725 - Light Maple Wood Finish

7105-01-682-9728 - Platinum Gray Finish

7105-01-682-9727 - Expanded Finish Option

Select any expanded finish shown on page 26.

Email furniture@gsa.gov to add selection to your order.



Three Drawer Bedside Cabinet with Spill Groove **19.75"W x 19.75"D x 30"H**

7105-01-652-8455 - Light Maple Wood Finish

7105-01-682-9729 - Platinum Gray Finish

7105-01-682-9726 - Expanded Finish Option

Select any expanded finish shown on page 26.

Email furniture@gsa.gov to add selection to your order.

PATIENT ROOM FURNITURE

Overbed Table

Overbed tables contain a solid surface top constructed of thermoformed vinyl with raised edge to contain spills. Tables feature offset metal column base with casters and pneumatic height adjustment range of at least 11" high to 30" - 41". The Maximum weight capacity is 100 lbs.



Overbed Table with Rectangular Shaped Top - 30"W x 16"D

7105-01-652-8444 - Light Maple Wood Finish

7105-01-683-0149 - Platinum Gray Finish

7105-01-683-0150 - Expanded Finish Option

Select any expanded finish shown on page 26.

Email furniture@gsa.gov to add selection to your order.



Overbed Table with Kidney Shaped Top - 30"W x 16"D

7105-01-683-0151 - Light Maple Wood Finish

7105-01-683-0152 - Platinum Gray Finish

7105-01-683-0153 - Expanded Finish Option

Select any expanded finish shown on page 26.

Email furniture@gsa.gov to add selection to your order.



NSN Healthcare Furniture

Contract #: 47QSM19A08NC Award Date: 08/23/2019

PATIENT ROOM FURNITURE

Dresser

Tops and fronts of patient room dressers are made of Thermoformed Vinyl, the body material is Laminate, and are locking. They feature metal legs with leveling glides, removable and field replaceable drawers, full extension glides with bumpers to soften the sound of closing, and venting. All drawers also include liners. Coordinating bedside cabinets and wardrobe towers are also available.



Three Drawer Dresser **31.75"W x 19.75"D x 30"H**

7105-01-683-0855 - Light Maple Wood Finish

7105-01-683-0856 - Platinum Gray Finish

7105-01-683-2154 - Expanded Finish Option

Select any expanded finish shown on page 26.

Email furniture@gsa.gov to add selection to your order.

PATIENT ROOM FURNITURE

Wardrobe Tower

Fronts of Patient Room wardrobe towers are made of Thermoformed Vinyl. The top and body material is Laminate, they are available in one and two door options, and are locking. They feature metal legs with leveling glides, one fixed top shelf with closet rod, removable and field replaceable doors, bumpers on doors to soften the sound of closing, and venting. Coordinating bedside cabinets and dressers are also available.



Right Door Wardrobe - 23.25"W x 19.75"D x 70"H

7105-01-683-0860 - Light Maple Wood Finish

7105-01-683-1403 - Platinum Gray Finish

7105-01-683-1404 - Expanded Finish Option

Select any expanded finish shown on page 26.

Email furniture@gsa.gov to add selection to your order.



Left Door Wardrobe - 23.25"W x 19.75"D x 70"H

7105-01-683-1405 - Light Maple Wood Finish

7105-01-683-0863 - Platinum Gray Finish

7105-01-683-0866 - Expanded Finish Option

Select any expanded finish shown on page 26.

Email furniture@gsa.gov to add selection to your order.



Double Door Wardrobe - 35.25"W x 23.25"D x 70"H

7105-01-683-0868 - Light Maple Wood Finish

7105-01-683-1406 - Platinum Gray Finish

7105-01-683-1407 - Expanded Finish Option

Select any expanded finish shown on page 26.

Email furniture@gsa.gov to add selection to your order.



PATIENT ROOM SEATING

High Back Patient Chair

High back patient chairs with wall saver design have open arms with black urethane arm caps. Chairs feature a cleanout space between the back and seat cushion, removable upholstery covers, removable and field replaceable cushions and a moisture barrier. Chair frames have an anti-microbial finish and glides. The chairs coordinate with other patient room seating within this line including recliners, gliders and sleepers.



Beech Wood Chair Frame **25"W x 27"D x 43.5"H**

7105-01-683-1762 - Blue Fabric

7105-01-683-1764 - Mocha Fabric



7105-01-683-1765 - Blue Vinyl

7105-01-683-1768 - Mocha Vinyl

7105-01-683-1162 - Expanded Upholstery Color Options

- *Select one of the many expanded upholstery color options shown on pages 24-25.*
- *Email furniture@gsa.gov to add your selection to your order.*



Silver Metallic Finish Chair Frame **25"W x 28"D x 43.75"H**

7105-01-683-1769 - Blue Fabric

7105-01-683-1771 - Mocha Fabric



7105-01-683-1773 - Blue Vinyl

7105-01-683-1789 - Mocha Vinyl

7105-01-683-1161 - Expanded Upholstery Color Options

- *Select one of the many expanded upholstery color options shown on pages 24-25.*
- *Email furniture@gsa.gov to add your selection to your order.*



PATIENT ROOM SEATING

Patient Recliner

Patient recliners are available as stationary or mobile with right flip down arm or left flip down arm options. Stationary recliners have glides. Mobile recliners have a central locking caster system and pushbar. All recliners feature black urethane arm caps, footrest/leg support, recliner control, removable upholstery covers, removable and field replaceable cushions, moisture barrier within the seat cushion, and a cleanout space between the back and the seat cushion. All recliners also come with an IV pole and holder and drainage bag/utility holder especially for healthcare environments. Maximum weight capacity is 300 lbs.



Stationary Patient Recliner with Right Flip Down Arm 29.5"W x 35"D x 45.5"H (Glides, No Casters)

7105-01-683-2155 - Blue Fabric

7105-01-683-2392 - Mocha Fabric



7105-01-683-2393 - Blue Vinyl

7105-01-683-2395 - Mocha Vinyl

7105-01-683-2396 - Expanded Upholstery Color Options

- *Select one of the many expanded upholstery color options shown on pages 24-25.*
- *Email furniture@gsa.gov to add your selection to your order.*



Stationary Patient Recliner with Left Flip Down Arm 29.5"W x 35"D x 45.5"H (Glides, No Casters)

7105-01-683-2397 - Blue Fabric

7105-01-683-2398 - Mocha Fabric



7105-01-683-2399 - Blue Vinyl

7105-01-683-2401 - Mocha Vinyl

7105-01-683-2400 - Expanded Upholstery Color Options

- *Select one of the many expanded upholstery color options shown on pages 24-25.*
- *Email furniture@gsa.gov to add your selection to your order.*



PATIENT ROOM SEATING

Patient Recliner

Patient recliners are available as stationary or mobile with right flip down arm or left flip down arm options. Stationary recliners have glides. Mobile recliners have a central locking caster system and pushbar. All recliners feature black urethane arm caps, footrest/leg support, recliner control, removable upholstery covers, removable and field replaceable cushions, moisture barrier within the seat cushion, and a cleanout space between the back and the seat cushion. All recliners also come with an IV pole and holder and drainage bag/utility holder especially for healthcare environments. Maximum weight capacity is 300 lbs.



Mobile Patient Recliner with Right Flip Down Arm 29.5"W x 35"D x 45.5"H (Central Locking Casters System)

7105-01-683-2402 - Blue Fabric

7105-01-683-2403 - Mocha Fabric



7105-01-683-2388 - Blue Vinyl

7105-01-683-2387 - Mocha Vinyl

7105-01-683-2386 - Expanded Upholstery Color Options

- *Select one of the many expanded upholstery color options shown on pages 24-25.*
- *Email furniture@gsa.gov to add your selection to your order.*



Mobile Patient Recliner with Left Flip Down Arm 29.5"W x 35"D x 45.5"H (Central Locking Casters System)

7105-01-683-2385 - Blue Fabric

7105-01-683-2384 - Mocha Fabric



7105-01-683-2389 - Blue Vinyl

7105-01-683-2390 - Mocha Vinyl

7105-01-683-2391 - Expanded Upholstery Color Options

- *Select one of the many expanded upholstery color options shown on pages 24-25.*
- *Email furniture@gsa.gov to add your selection to your order.*



PATIENT ROOM SEATING

Trendelenburg Recliner

Trendelenburg recliners allow individuals to recline to a position where the body is flat and feet are elevated above the head. These trendelenburg recliners are available as stationary or mobile with right flip down arm or left flip down arm options. Stationary recliners have glides. Mobile recliners have a central locking caster system and pushbar. All recliners feature black urethane arm caps, footrest/leg support, recliner control, removable upholstery covers, removable and field replaceable cushions, moisture barrier within the seat cushion, and a clean-out space between the back and the seat cushion. All recliners also come with an IV pole and holder and drainage bag/utility holder especially for healthcare environments. Maximum weight capacity is 300 lbs.



Stationary Trendelenburg Recliner with Right Flip Down Arm 29.5"W x 35"D x 45.5"H (Glides, No Casters)

7105-01-683-3018 - Blue Fabric

7105-01-683-3019 - Mocha Fabric



7105-01-683-3022 - Blue Vinyl

7105-01-683-3025 - Mocha Vinyl

7105-01-683-3020 - Expanded Upholstery Color Options

- *Select one of the many expanded upholstery color options shown on pages 24-25.*
- *Email furniture@gsa.gov to add your selection to your order.*



Stationary Trendelenburg Recliner with Left Flip Down Arm 29.5"W x 35"D x 45.5"H (Glides, No Casters)

7105-01-683-3017 - Blue Fabric

7105-01-683-3021 - Mocha Fabric



7105-01-683-0162 - Blue Vinyl

7105-01-683-0136 - Mocha Vinyl

7105-01-683-2156 - Expanded Upholstery Color Options

- *Select one of the many expanded upholstery color options shown on pages 24-25.*
- *Email furniture@gsa.gov to add your selection to your order.*



PATIENT ROOM SEATING

Trendelenburg Recliner

Trendelenburg recliners allow individuals to recline to a position where the body is flat and feet are elevated above the head. These trendelenburg recliners are available as stationary or mobile with right flip down arm or left flip down arm options. Stationary recliners have glides. Mobile recliners have a central locking caster system and pushbar. All recliners feature black urethane arm caps, footrest/leg support, recliner control, removable upholstery covers, removable and field replaceable cushions, moisture barrier within the seat cushion, and a clean-out space between the back and the seat cushion. All recliners also come with an IV pole and holder and drainage bag/utility holder especially for healthcare environments. Maximum weight capacity is 300 lbs.



Mobile Trendelenburg Recliner with Right Flip Down Arm 29.5"W x 35"D x 45.5"H (Central Locking Casters System)

7105-01-683-0137 - Blue Fabric

7105-01-683-0138 - Mocha Fabric



7105-01-683-0139 - Blue Vinyl

7105-01-683-0140 - Mocha Vinyl

7105-01-683-0141 - Expanded Upholstery Color Options

- *Select one of the many expanded upholstery color options shown on pages 24-25.*
- *Email furniture@gsa.gov to add your selection to your order.*



Mobile Trendelenburg Recliner with Left Flip Down Arm 29.5"W x 35"D x 45.5"H (Central Locking Casters System)

7105-01-683-0142 - Blue Fabric

7105-01-683-0143 - Mocha Fabric



7105-01-683-3770 - Blue Vinyl

7105-01-683-3023 - Mocha Vinyl

7105-01-683-3771 - Expanded Upholstery Color Options

- *Select one of the many expanded upholstery color options shown on pages 24-25.*
- *Email furniture@gsa.gov to add your selection to your order.*



PATIENT ROOM SEATING

Glider

Patient gliders with closed arm design and black urethane arm caps, have a concealed gliding mechanism and a cleanout space between the back and the seat cushion. Removable and field replaceable cushions also have a moisture barrier within the seat cushion and removable fabric covers. The maximum weight capacity is 350 lbs.



Glider

28"W x 28"D x 43.5"H

7105-01-682-9889 - Blue Fabric

7105-01-683-0145 - Mocha Fabric



7105-01-683-0146 - Blue Vinyl

7105-01-683-0147 - Mocha Vinyl

7105-01-683-0148 - Expanded Upholstery Color Options

- *Select one of the many expanded upholstery color options shown on pages 24-25.*
 - *Email furniture@gsa.gov to add your selection to your order.*
-

PATIENT ROOM SEATING

Exam Stool

Backless round revolving exam stool features a round vinyl upholstered cushion seat, moisture barrier within the seat cushion, pneumatic height adjustment, five star base and soft casters. Seat can be adjusted from 15.1" - 20.3" from floor.



Exam Stool

22.3"W x 22.3"D x 15.1"-20.3"H.; Seat Width: 16.8"

7110-01-683-0851



PATIENT ROOM SEATING

Single Seat Sleeper

Single seat sleeper is fully upholstered with arms and black urethane arm caps. Sleeper features a cleanout space between the back and the seat cushion and has a moisture barrier within the seat and inside back cushion. Stationary sleepers have glides. Mobile recliners have locking casters. Sleeper in a closed position is 35"W x 38"D x 39"H. Extended, the sleeping surface depth is 87" and width is 35".



Stationary single sleeper with glides 35"W x 38"D x 39"H

7105-01-683-0871 - Blue Fabric

7105-01-683-0875 - Mocha Fabric



7105-01-683-0854 - Blue Vinyl

7105-01-683-0852 - Mocha Vinyl

7105-01-683-0850 - Expanded Upholstery Color Options

- *Select one of the many expanded upholstery color options shown on pages 24-25.*
- *Email furniture@gsa.gov to add your selection to your order.*



Mobile single sleeper with locking casters 35"W x 38"D x 39"H

7105-01-683-0853 - Blue Fabric

7105-01-683-0857 - Mocha Fabric



7105-01-683-0858 - Blue Vinyl

7105-01-683-0859 - Mocha Vinyl

7105-01-683-1402 - Expanded Upholstery Color Options

- *Select one of the many expanded upholstery color options shown on pages 24-25.*
- *Email furniture@gsa.gov to add your selection to your order.*



PATIENT ROOM SEATING

Two Seat Sleeper

Two seat sleeper is fully upholstered with arms and black urethane arm caps. Sleeper features a cleanout space between the back and the seat cushion and has a moisture barrier within the seat and inside back cushion. Stationary sleepers have glides. Mobile recliners have locking casters. Sleeper in a closed position is 54"W x 38"D x 39"H. Extended, the sleeping surface depth is 87" and width is 54".



Stationary two seat sleeper with glides 54"W x 38"D x 39"H

7105-01-683-0460 - Blue Fabric

7105-01-683-0462 - Mocha Fabric



7105-01-683-0465 - Blue Vinyl

7105-01-683-0466 - Mocha Vinyl



7105-01-683-0467 - Expanded Upholstery Color Options

- *Select one of the many expanded upholstery color options shown on pages 24-25.*
- *Email furniture@gsa.gov to add your selection to your order.*



Mobile two seat sleeper with locking casters 54"W x 38"D x 39"H

7105-01-683-0469 - Blue Fabric

7105-01-683-0861 - Mocha Fabric



7105-01-683-0864 - Blue Vinyl

7105-01-683-0867 - Mocha Vinyl



7105-01-683-0869 - Expanded Upholstery Color Options

- *Select one of the many expanded upholstery color options shown on pages 24-25.*
- *Email furniture@gsa.gov to add your selection to your order.*



PATIENT ROOM SEATING

Three Seat Sleeper

Three seat sleeper is fully upholstered with arms and black urethane arm caps. Sleeper features a cleanout space between the back and the seat cushion and has a moisture barrier within the seat and inside back cushion. Stationary sleepers have glides. Mobile recliners have locking casters. Sleeper in a closed position is 78"W x 34.5"D x 34.5"H. Extended, the sleeping surface depth is 28.75" and width is 72".



Stationary three seat sleeper with glides 78"W x 34.5"D x 34.5"H

7105-01-683-0879 - Blue Fabric



7105-01-683-0878 - Mocha Fabric



7105-01-683-0877- Blue Vinyl

7105-01-683-0862 - Mocha Vinyl



7105-01-683-0865 - Expanded Upholstery Color Options

- *Select one of the many expanded upholstery color options shown on pages 24-25.*
- *Email furniture@gsa.gov to add your selection to your order.*



Mobile three seat sleeper with locking casters 78"W x 34.5"D x 34.5"H

7105-01-683-0870 - Blue Fabric



7105-01-683-0872 - Mocha Fabric

7105-01-683-0873- Blue Vinyl



7105-01-683-0874 - Mocha Vinyl

7105-01-683-0876 - Expanded Upholstery Color Options

- *Select one of the many expanded upholstery color options shown on pages 24-25.*
- *Email furniture@gsa.gov to add your selection to your order.*



WAITING ROOM SEATING

Single Seat Arm Chair

Single seat waiting room arm chairs are designed to coordinate and have the ability to be ganged with waiting room two seat chair, three seat chair, and bariatric arm chair. Ganging accessory and any hardware necessary to be connected by the end user without the use of tools is included. The chair frame features open arms with arm caps, glides, wall saver design, and an anti-microbial finish. Chair also has a removable seat cushion, clean-out space between the back and the seat cushion, and a moisture barrier within the seat cushion. Maximum weight capacity is 350 lbs.



Beech Wood Chair Frame

25"W x 27"D x 34.25"H

7105-01-683-1792 - Blue Fabric

7105-01-683-1793 - Mocha Fabric

7105-01-683-1794- Blue Vinyl

7105-01-683-1795 - Mocha Vinyl

7105-01-683-1159 - Expanded Upholstery Color Options

- *Select one of the many expanded upholstery color options shown on pages 24-25.*
- *Email furniture@gsa.gov to add your selection to your order.*



Silver Metallic Finish Chair Frames

25"W x 28"D x 34.5"H

7105-01-683-1796 - Blue Fabric

7105-01-683-1797 - Mocha Fabric

7105-01-683-1798 - Blue Vinyl

7105-01-683-1800- Mocha Vinyl

7105-01-683-1156 - Expanded Upholstery Color Options

- *Select one of the many expanded upholstery color options shown on pages 24-25.*
- *Email furniture@gsa.gov to add your selection to your order.*



WAITING ROOM SEATING

Two Seat Chair

Two seat waiting room arm chairs are designed to coordinate and have the ability to be ganged with waiting room single seat chair, three seat chair, and bariatric arm chair. Ganging accessory and any hardware necessary to be connected by the end user without the use of tools is included. The chair frame features open arms with black urethane arm caps, glides, wall saver design, and an anti-microbial finish. Chair also has removable seat cushions, cleanout space between the back and the seat cushion, and a moisture barrier within the seat cushion. Maximum weight capacity is 350 lbs. per seat.



Beech Wood Chair Frame

46.5"W x 27"D x 34.25"H

7105-01-683-1783 - Blue Fabric

7105-01-683-1784 - Mocha Fabric

7105-01-683-1785- Blue Vinyl

7105-01-683-1786- Mocha Vinyl

7105-01-683-1157 - Expanded Upholstery Color Options

- *Select one of the many expanded upholstery color options shown on pages 24-25.*
- *Email furniture@gsa.gov to add your selection to your order.*



Silver Metallic Finish Chair Frames

46.5"W x 28"D x 34.5"H

7105-01-683-1787 - Blue Fabric

7105-01-683-1788 - Mocha Fabric

7105-01-683-1790 - Blue Vinyl

7105-01-683-1791- Mocha Vinyl

7105-01-683-1154 - Expanded Upholstery Color Options

- *Select one of the many expanded upholstery color options shown on pages 24-25.*
- *Email furniture@gsa.gov to add your selection to your order.*



WAITING ROOM SEATING

Three Seat Chair

Three seat waiting room arm chairs are designed to coordinate and have the ability to be ganged with waiting room single seat chair, two seat chair, and bariatric arm chair. Ganging accessory and any hardware necessary to be connected by the end user without the use of tools is included. The chair frame features open arms with black urethane arm caps, glides, wall saver design, and an anti-microbial finish. Chair also has removable seat cushions, cleanout space between the back and the seat cushion, and a moisture barrier within the seat cushion. Maximum weight capacity is 350 lbs. per seat.



Beech Wood Chair Frame

68"W x 27"D x 34.25"H

7105-01-683-1763 - Blue Fabric



7105-01-683-1766 - Mocha Fabric



7105-01-683-1767- Blue Vinyl

7105-01-683-1770- Mocha Vinyl



7105-01-683-1151 - Expanded Upholstery Color Options

- *Select one of the many expanded upholstery color options shown on pages 24-25.*
- *Email furniture@gsa.gov to add your selection to your order.*



Silver Metallic Finish Chair Frames

68"W x 28"D x 34.5"H

7105-01-683-1772 - Blue Fabric



7105-01-683-1774 - Mocha Fabric



7105-01-683-2394 - Blue Vinyl

7105-01-683-1775- Mocha Vinyl



7105-01-683-1153 - Expanded Upholstery Color Options

- *Select one of the many expanded upholstery color options shown on pages 24-25.*
- *Email furniture@gsa.gov to add your selection to your order.*



WAITING ROOM SEATING

Bariatric Arm Chair

Bariatric waiting room arm chairs are designed to coordinate and have the ability to be ganged with waiting room single seat chair, two seat chair, and three seat chair. Ganging accessory and any hardware necessary to be connected by the end user without the use of tools is included. The chair frame features open arms with black urethane arm caps, glides, wall saver design, and an anti-microbial finish. Chair also has removable seat cushions, cleanout space between the back and the seat cushion, and a moisture barrier within the seat cushion. Maximum weight capacity is 500 lbs.



Beech Wood Chair Frame

34"W x 27"D x 34.25"D

7105-01-683-1754 - Blue Fabric



7105-01-683-1755 - Mocha Fabric



7105-01-683-1753- Blue Vinyl



7105-01-683-1756- Mocha Vinyl

7105-01-683-1158 - Expanded Upholstery Color Options

- *Select one of the many expanded upholstery color options shown on pages 24-25.*
- *Email furniture@gsa.gov to add your selection to your order.*



Silver Metallic Finish Chair Frames

34"W x 28"D x 34.5"D

7105-01-683-1757 - Blue Fabric



7105-01-683-1758 - Mocha Fabric



7105-01-683-1759 - Blue Vinyl



7105-01-683-1760- Mocha Vinyl

7105-01-683-1160 - Expanded Upholstery Color Options

- *Select one of the many expanded upholstery color options shown on pages 24-25.*
- *Email furniture@gsa.gov to add your selection to your order.*



WAITING ROOM SEATING

Hip Chair

The hip chair is 23"-26" H and is from the same line as all other waiting room seating chairs. The hip chair frame has open arms with black urethane arm caps and features wall saver design, a non skid footrest, removable and field replaceable cushions, moisture barrier within seat cushion, cleanout space between back and seat cushion, and glides. Maximum weight capacity is 300 lbs.



Beech Wood Chair Frame

25"W x 28.25"D x 40"H

7105-01-683-1799 - Blue Fabric

7105-01-683-1776 - Mocha Fabric

7105-01-683-1777- Blue Vinyl

7105-01-683-1778- Mocha Vinyl

7105-01-683-1155 - Expanded Upholstery Color Options

- *Select one of the many expanded upholstery color options shown on pages 24-25.*
- *Email furniture@gsa.gov to add your selection to your order.*



Silver Metallic Finish Chair Frames

25"W x 30.75"D x 40.5"H

7105-01-683-1779 - Blue Fabric

7105-01-683-1780 - Mocha Fabric

7105-01-683-1781 - Blue Vinyl

7105-01-683-1782- Mocha Vinyl

7105-01-683-1152 - Expanded Upholstery Color Options

- *Select one of the many expanded upholstery color options shown on pages 24-25.*
- *Email furniture@gsa.gov to add your selection to your order.*



WAITING ROOM SEATING

Free Standing End Table



7105-01-683-0468

Freestanding end table - Wood Table Base - Light Maple Wood Finish - 22"W x 22"D x 16"H - Freestanding end tables feature square laminate tops and glides on the table legs.



7105-01-683-0472

Freestanding end table - Wood Table Base - Platinum Gray Finish - 22"W x 22"D x 16"H - Freestanding end tables feature square laminate tops and glides on the table legs.



7105-01-683-0473

Freestanding end table - Silver Metallic Finish Table Base - Light Maple Wood Finish - 22"W x 22"D x 16"H - Freestanding end tables feature square laminate tops and glides on the table legs.



7105-01-683-0449

Freestanding end table - Silver Metallic Finish Table Base - Platinum Gray Finish - 22"W x 22"D x 16"H - Freestanding end tables feature square laminate tops and glides on the table legs.



WAITING ROOM SEATING

Attached End Table



7105-01-683-0451

Attached end table - Wood Table Base - Light Maple Wood Finish - 22"W x 22"D x 16"H - Attached end tables are non-handed and attach to waiting room single seat, two seat, three seat and bariatric chairs. Attachment hardware is included. Tables feature laminate tops and glides on table legs.



7105-01-683-2157

Attached end table - Wood Table Base - Platinum Gray Finish - 22"W x 22"D x 16"H - Attached end tables are non-handed and attach to waiting room single seat, two seat, three seat and bariatric chairs. Attachment hardware is included. Tables feature laminate tops and glides on table legs.



7105-01-683-0450

Attached end table - Silver Metallic Finish Table Base - Light Maple Wood Finish - 22"W x 22"D x 16"H - Attached end tables are non-handed and attach to waiting room single seat, two seat, three seat and bariatric chairs. Attachment hardware is included. Tables feature laminate tops and glides on table legs.



7105-01-683-0452

Attached end table - Silver Metallic Finish Table Base - Platinum Gray Finish - 22"W x 22"D x 16"H - Attached end tables are non-handed and attach to waiting room single seat, two seat, three seat and bariatric chairs. Attachment hardware is included. Tables feature laminate tops and glides on table legs.



WAITING ROOM SEATING

Attached Connecting Table



7105-01-683-0454

Attached connecting laminate top table - Light Maple Wood Finish - 22"W x 22"D - Attached connecting laminate top table is non-handed. This table does not have legs as it is intended to attach between waiting room single, two seat, three seat or bariatric chairs. Attachment hardware is include.



7105-01-683-0456

Attached connecting laminate top table - Platinum Gray Finish - 22"W x 22"D - Attached connecting laminate top table is non-handed. This table does not have legs as it is intended to attach between waiting room single, two seat, three seat or bariatric chairs. Attachment hardware is include.



WAITING ROOM SEATING

Coffee Table



7105-01-683-0458

Rectangular coffee table - Wood Table Base - Light Maple Wood Finish - Rectangular coffee table features laminate top and glides on table legs - 42"W x 22"D x 16"H



7105-01-683-0459

Rectangular coffee table - Wood Table Base - Platinum Gray Finish - Rectangular coffee table features laminate top and glides on table legs - 42"W x 22"D x 16"H



7105-01-683-0463

Rectangular coffee table - Silver Metallic Finish Table Base - Light Maple Wood Finish - Rectangular coffee table features laminate top and glides on table legs - 42"W x 22"D x 16"H



7105-01-683-0464

Rectangular coffee table - Silver Metallic Finish Table Base - Platinum Gray Finish - Rectangular coffee table features laminate top and glides on table legs - 42"W x 22"D x 16"H



EXPANDED COLOR OPTIONS

Solid Fabrics



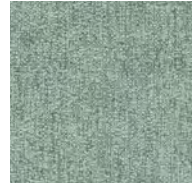
CF Stinson
Shimmy
London 65179



CF Stinson
Shimmy
Palladium 65183



CF Stinson
Shimmy
Savannah 65180

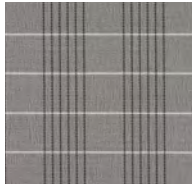


CF Stinson
Shimmy
Tidepool 65182

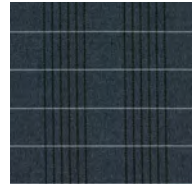
Patterned Fabrics



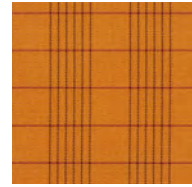
Designtex
Windowpane Crypton
Char 3861-802



Designtex
Windowpane Crypton
Grey 3861-801



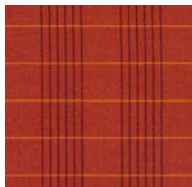
Designtex
Windowpane Crypton
Ink Blue 3861-405



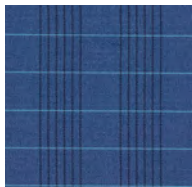
Designtex
Windowpane Crypton
Marigold 3861-701



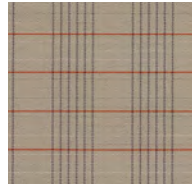
Designtex
Windowpane Crypton
Parakeet 3861-502



Designtex
Windowpane Crypton
Persimmon 3861-702



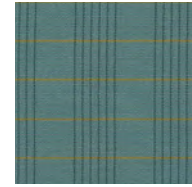
Designtex
Windowpane Crypton
Royal 3861-402



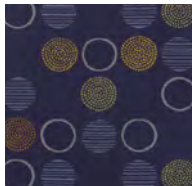
Designtex
Windowpane Crypton
Sand 3861-102



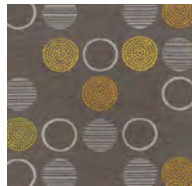
Designtex
Windowpane Crypton
Tan 3861-103



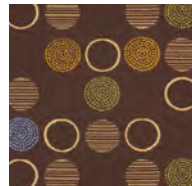
Designtex
Windowpane Crypton
Turquoise 3861-403



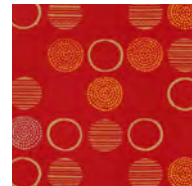
Momentum
Amuse
Admiral



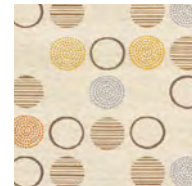
Momentum
Amuse
Alloy



Momentum
Amuse
Mocha



Momentum
Amuse
Poppy



Momentum
Amuse
Quartz



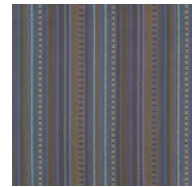
Momentum
Beep
Bridge



Momentum
Beep
Flax



Momentum
Beep
Furnace



Momentum
Beep
Pontoon



Momentum
Beep
Steel



EXPANDED COLOR OPTIONS

Solid Vinyls



CF Stinson
Core
Black Plum CRE62



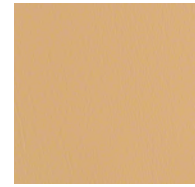
CF Stinson
Core
Blueberry CRE61



CF Stinson
Core
Bucksuede CRE55



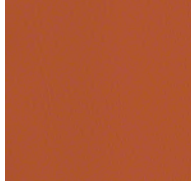
CF Stinson
Core
Cadet CRE13



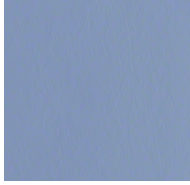
CF Stinson
Core
Camel Back CRE44



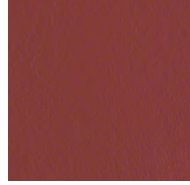
CF Stinson
Core
Horizon Blue CRE20



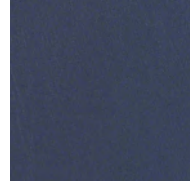
CF Stinson
Core
Manzanita CRE58



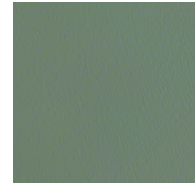
CF Stinson
Core
Neptune CRE16



CF Stinson
Core
New Burgundy CRE68



CF Stinson
Core
Royal Blue CRE40



CF Stinson
Core
Vizcaya Palm CRE29



CF Stinson
Core
Wood Violet CRE46



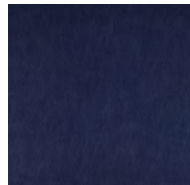
Maharam
Lariat
Auburn 031



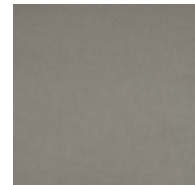
Maharam
Lariat
Brick Red 003



Maharam
Lariat
Macaw 034



Maharam
Lariat
Navy 021



Maharam
Lariat
Pebble 016

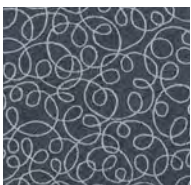


Maharam
Lariat
Plum 032



Maharam
Lariat
Tamarind 028

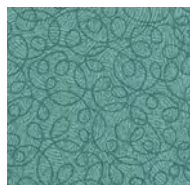
Patterned Vinyls



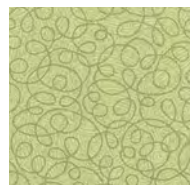
CF Stinson
Tendril
Denim TNR213



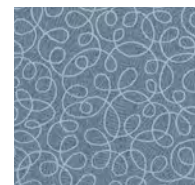
CF Stinson
Tendril
River Rock TNR206



CF Stinson
Tendril
Splash TNR205



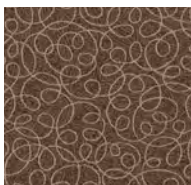
CF Stinson
Tendril
Sprout TNR208



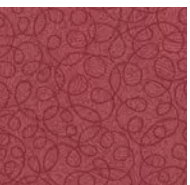
CF Stinson
Tendril
Stellar TNR200



CF Stinson
Tendril
Sundown TNR203



CF Stinson
Tendril
Teak TNR215



CF Stinson
Tendril
Wild Berry TNR210

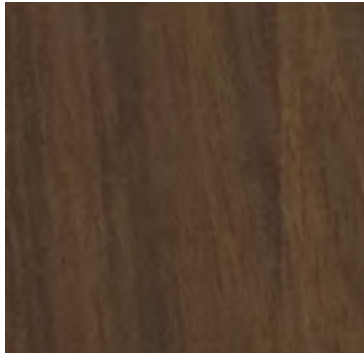


EXPANDED LAMINATE AND COORDINATING THERMOFORMED VINYL OPTIONS

The following laminates and coordinating thermoform vinyls are available for bedside cabinets, dressers, wardrobe towers, and overbed tables.



Copper



Park Avenue



Nutmeg



ORDER INFORMATION

GSA Global Supply accepts your government purchase card or direct billing through your Activity Address Code (AAC) or DoDAAC. For information on obtaining an AAC or DoDAAC, contact our Order Management Office at (800) 927-7622 or ordermgmt@gsa.gov.

Online: www.GSAGlobalsupply.gsa.gov

Available 24/7, the GSA Global Supply website gives you access to hundreds of thousands of tools, office supplies, computer products, furniture and other items.

Telephone:

(800) 525-8027 | DSN 465-1416 Available 7:30 a.m. to 8 p.m. (ET), Monday through Friday.

Fax Orders:

(800) 856-7057 Available 24/7. You will receive order confirmation via fax.

FEDSTRIP/MILSTRIP:

We're integrated with orders routed from DLA Transaction Services. We're also happy to accept your Standard Form 344 or DD Form 1348 by mail at: GSA Global Supply (QSDLBB) 819 Taylor St., Room 6A00 Fort Worth, TX 76102

Please ensure that a contact person and a commercial telephone number accompany all orders to expedite any necessary clarification. The office cannot return DSN or Autovon calls. For FEDSTRIP/MILSTRIP orders, please enter the name and phone number in the "Mark For" section of your requisition.

Please be sure to include a supplemental address if the signal code (Block 51 of Standard Form 344) is anything other than "A". Please also verify that your supplemental address is accurate and includes a telephone number and/or point of contact if possible.

Additional Ordering Options:

GSAAdvantage!®: www.gsaadvantage.gov Available 24 hours a day, seven days a week. The same user ID and password can be used on both the GSA Global Supply website and GSAAdvantage! The contractor field will indicate "GSA Global Supply."

DOD EMALL:

Available 24/7. All GSA Global Supply items appear on the Defense Logistics Agency's DOD EMALL site. Customer must use their DoDAAC to purchase GSA items. The supplier field will indicate "GSA MILSTRIP" if the product is offered by GSA Global Supply.

Contract Prices:

Please refer to www.globalsupply.gsa.gov for the most current pricing.

Delivery Conditions:

Delivery to a location with a loading dock.

Installation:

Installation available for CONUS only. The product ships to a location that has a loading dock. Customers may arrange for inside delivery or additional services when they need freight delivered beyond their loading docks, at an extra cost. To request special handling, please contact the GSA National Customer Service Center (NCSC) at 800-488-3111 or NCSCcustomer.service@gsa.gov



Warranty:

Krug warrants the construction and the finish for all our products to be free from defect in materials and workmanship for a period of 10 years from the date of purchase. This warranty does not apply to components not manufactured by Krug including textiles, which are subject to the specific warranties of those manufacturers, if any. Textiles (fabric, leather, vinyl, or any other covering material) suppliers do not guarantee their products for durability and color fastness, and not does Krug. Casters, mechanical and electrical components have a warranty of five years from the date of purchase. The Krug warranty does not apply to COM specified materials; damage caused by a carrier other than Krug, or variation in wood finishes due to natural wood color variations. Krug cannot be held responsible for variations in fabric dye lots from order to order. All fabric is carefully inspected when it is received, but a degree of variation in color should be expected. Repair or replacement of any defect covered by Krug warranty will be made at no charge to the original purchaser during the warranty period. This warranty does not apply to defects resulting from negligence, misuse, alteration, improper cleaning, stains or accidents. Krug's judgement will be final in all matters concerning the condition of the defect, and the necessity or manner of repair. Krug is not responsible for the damage or degradation of product that may occur due to extreme hot or cold temperatures after is has left Krug. Krug product should not be exposed to any extreme hot or cold temperatures during its life. All products should be stored in climate-controlled warehousing and should be transported on climate-controlled trailers and containers, in order to protect its integrity. Trailers and containers should not be used for storage of products. Products should remain in a climate-controlled environment until the time that transport commences, and should be moved into a climate-controlled environment as soon as transport is complete. Exposure to extreme heat or cold temperature voids the Krug warranty. This warranty applies to products sold in North America only, and in made by Krug only to the original purchasers acquiring our products through authorized Krug dealers, directly from Krug, or from others specifically authorized to sell our products.

Resolution of Problems with Orders:

The GSA National Customer Service Center (NCSC) is the point to which all discrepancy reports (as well as quality deficiency reports) should be addressed for processing: GSA National Customer Service Center, 800-488-3111 or NCSCcustomer.service@gsa.gov

