



U.S. General Services Administration

Great Lakes Region Industry Networking Expo

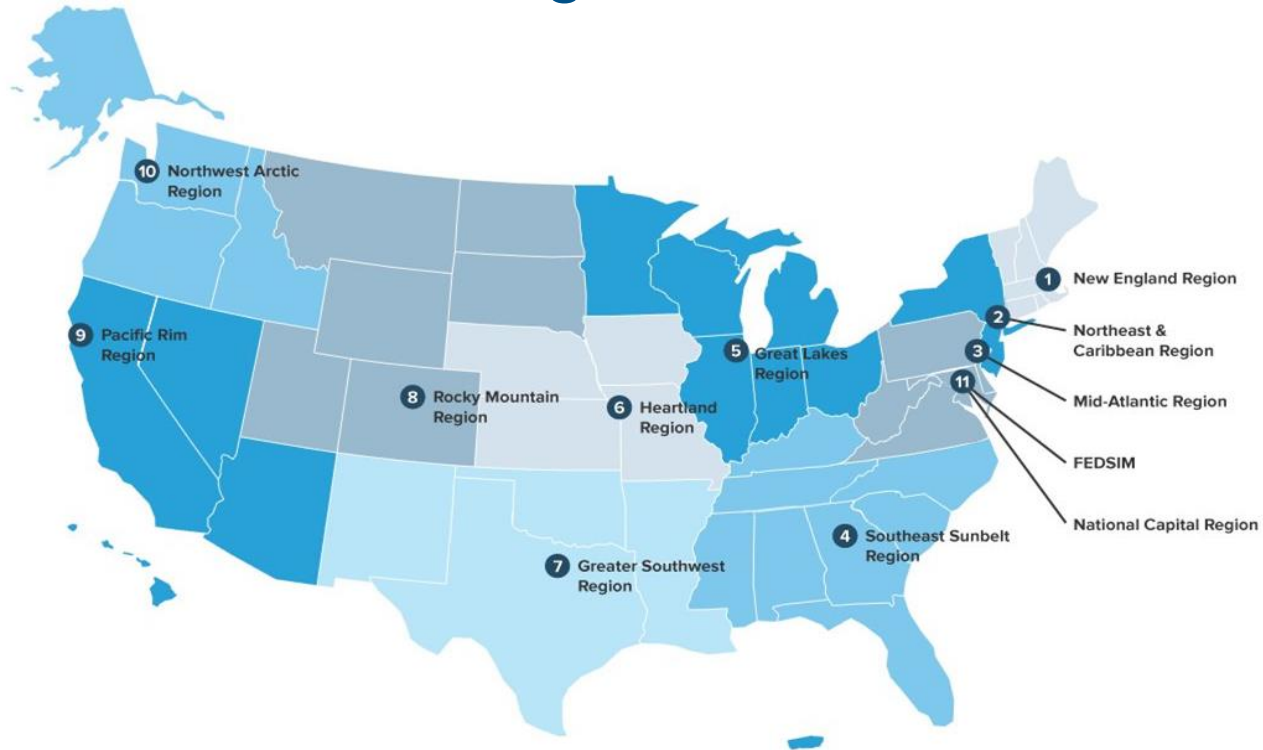
presented by: GSA Region 5 Public Buildings Service



UNITED STATES COURTHOUSE

August 8, 2023

GSA Region 5 - Great Lakes Region





U.S. General Services Administration

PORTFOLIO MANAGEMENT DIVISION

Bill James, Director
bill.james@gsa.gov

Portfolio Management Division

- Strategy Development and Coordination
- Investment / Divestment Decisions
 - 34 million square foot portfolio
 - Over 150 owned properties across region; 20 million square feet
 - \$700 million in capital investment since 2018; additional \$1.1 billion in needs identified in 5-year plan
- Appraisals - Support investment / disposal, set rent rates
- Outleasing - short / longer term use of Federal Property / Antennas, Retail Use, Filming Locations





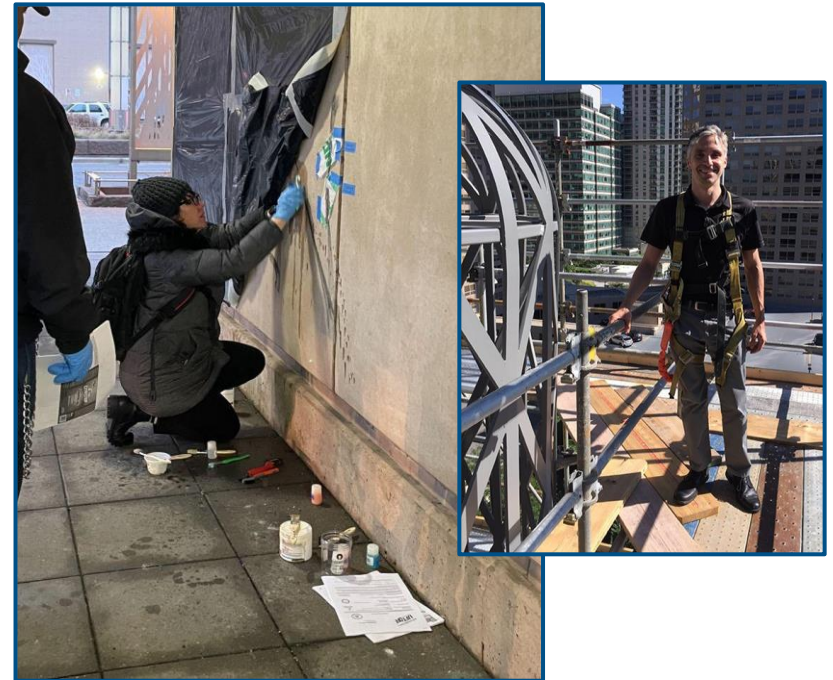
U.S. General Services Administration

PROJECT PROGRAMS DIVISION

Angela Miklich, Director
angela.miklich@gsa.gov

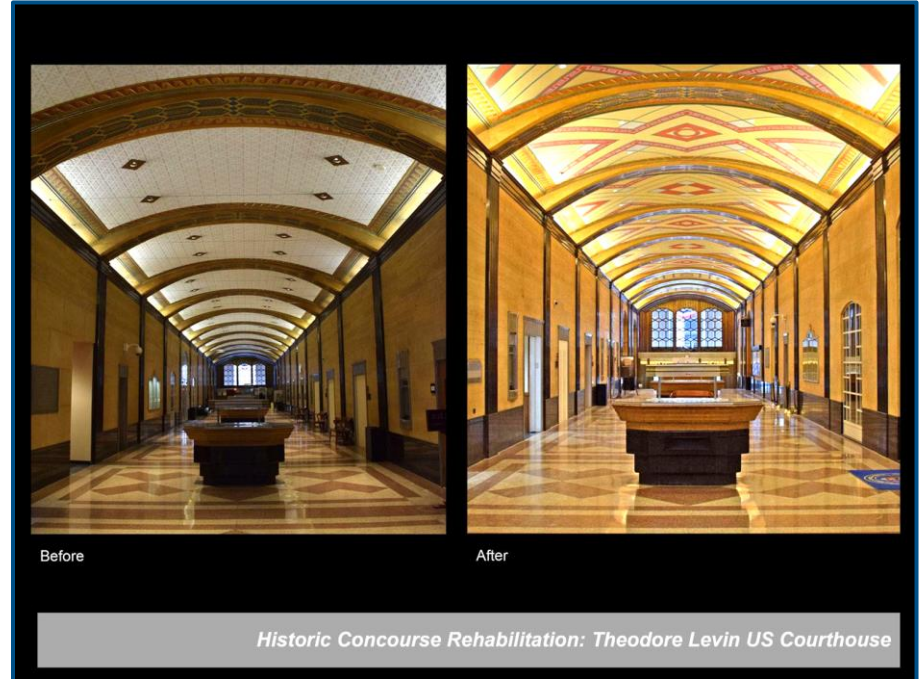
Design & Construction, Project Programs

Administers and oversees design and construction programs **across the Region**. Provides strategic project planning, **subject matter expertise**, and advisory services in the support of project delivery and building management. Leads **design-sector partnerships** and **community engagements**.



Who We Are

- Historic Preservation
- Fine Arts
- Architecture
- Engineering (Structural, Mechanical, Electrical)
- Sustainable Landscape Design
- Urban Planning
- Art Conservation
- Accessibility
- Building Design Standards
- Building Information Modeling (BIM)
- Cost Estimating





U.S. General Services Administration

FACILITIES MANAGEMENT & SERVICES PROGRAMS

William Renner, Director
william.renner@gsa.gov



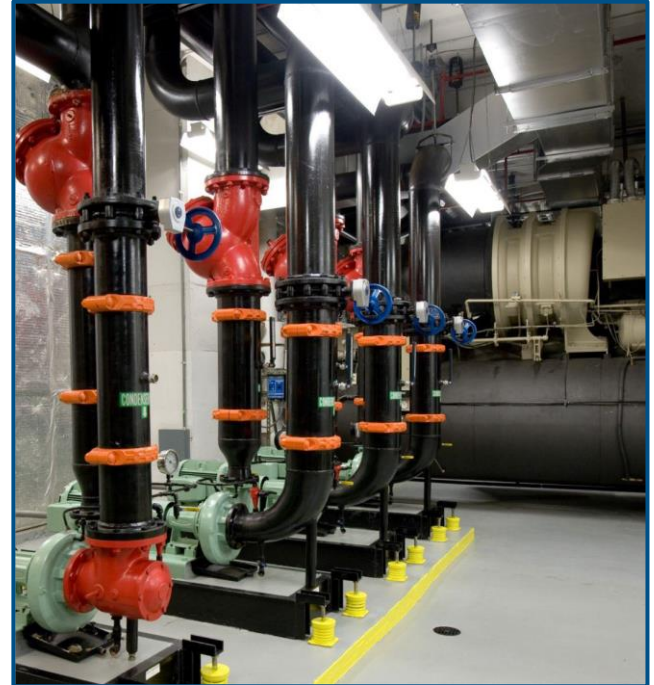
Facilities Management and Service Programs

Oversees regional programs related to the **management** and **operation** of space under the jurisdiction, custody, or control of the Public Building Service (PBS), both federally-owned and leased.

FMSP coordinates with Central Office program offices and **provides guidance to Service Centers** and other regional organizations in executing national policy and strategies.

Building Operations and Tenant Services

Building Operations General Policy &
Guidance
Concessions
Custodial
Elevators
MARS
Operations & Maintenance
Tenant Satisfaction Survey
Space Use in Buildings and Grounds



Energy, Environment and Sustainability

Asbestos & Lead-Based Paint

Drinking Water

Emerging Technologies

Energy Studies & Projects

Energy Savings Performance

Contracts

Fuel Storage Tanks

Indoor Air Quality

NEPA & Floodplain Management

Sustainability Programs

Utilities Management and Services



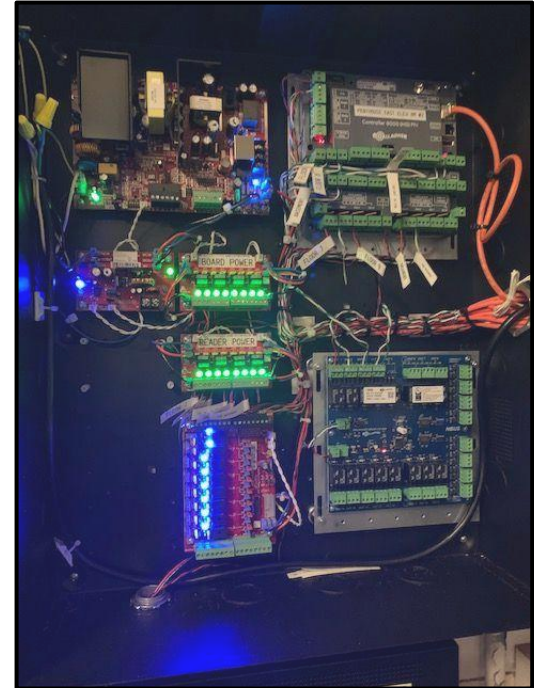
Fire and Life Safety

Fire Protection General Guidance
Fire Protection Project Support
Fire Protection Leasing Support
Fire Protection Master Specs
Safety and Health



Innovation, Technology and Performance

Building Automation System
Advanced Metering
National Computerized Maintenance Management
System
Smart Buildings
Digital Signage
Technology Guidance
Occupancy Measurement and Verification
Emerging Technologies





U.S. General Services Administration

SERVICE CENTER OPERATIONS

Northern: Minnesota, Wisconsin, Michigan
Michele Sharples, Director

Southern: Ohio, Indiana, Southern Illinois
Kathryn Leonardo, Director

Chicagoland
William Earle, Director

Who We Are

We **operate** and **manage** many different types of federal property including:

- Federal Buildings
- Courthouses
- Land Ports of Entry
- Archives
- Receiving Centers
- Warehouses
- Detention Centers
- Historical Buildings
- Green Buildings
- Parking Garages



Federal Center
Chicago, IL



Carl B. Stokes
US Courthouse
Cleveland, OH



Theodore Levin US Courthouse
Detroit, MI

Service Center Operations

Building Management

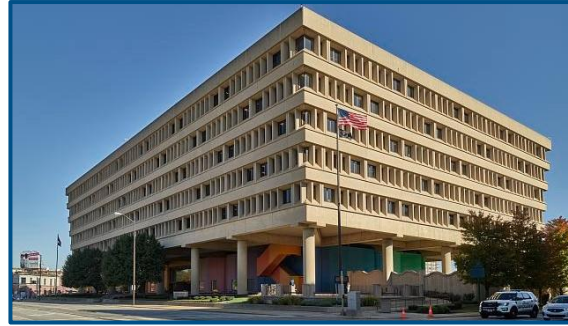
- Janitorial
- Operations & Maintenance
- Snow Removal
- Elevator Maintenance
- Complete Facilities Management
- Green Roof Maintenance
- Landscaping
- Plaza Restoration



Service Center Operations

Project Management

- Design and Construction Contracts up to 3.1 Million
 - Historic Renovations
 - Repairs and Alterations
 - Infrastructure Modification
 - Environmental Liabilities
 - Tenant Improvements
 - Estimating Services
 - Technology Improvements (HVAC, BAS, Fire, etc)
 - Construction Management Consulting Services



Minton Capehart Federal Building
Indianapolis, IN



Chicago Federal Center Plaza
Chicago, IL

Who to Contact

DIVISIONAL POINTS OF CONTACT

Chicagoland, Northern Illinois:

William Earle, Director

william.earle@gsa.gov

Southern Illinois, Indiana, Ohio:

Kathryn Leonardo, Director

kathryn.leonardo@gsa.gov

Minnesota, Wisconsin, Michigan:

Michele Sharples, Director

michele.sharples@gsa.gov





U.S. General Services Administration

PROJECT DELIVERY DIVISION

John Caswell, Director
john.caswell@gsa.gov

Who We Are

Project Management & Technical Representatives

Our team is made up of professionals who manage projects, advise the contracting officer from a technical perspective and work from cradle to grave to execute projects that support the mission need of GSA and our tenant agencies.

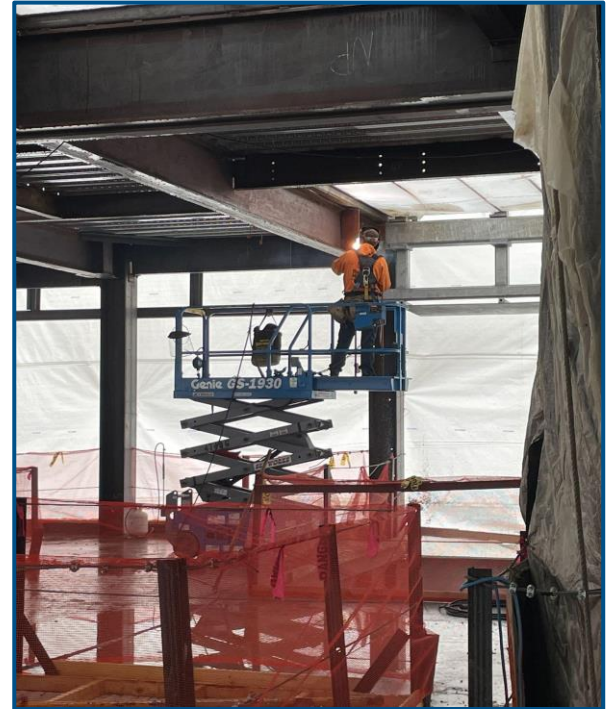


Joseph P. Kinneary U.S. Courthouse
Columbus, OH

Design & Construction, Project Delivery

- Capital construction projects in Federally Owned Buildings
 - Capital (Prospectus) > \$3.6M Construction Cost
 - New Construction
 - Major Modernizations
 - Energy Savings Performance Contracts
- Capital Projects are authorized by Congress
- Projects occur in all six states comprising Region 5

We Deliver PROJECTS



How We Partner

- Planning
 - Feasibility Studies
 - Program of Requirements
- Design
 - Design Excellence
 - AE IDIQ
 - Design/Build
 - CMa/CXa
- Construction
 - CMa/CXa
 - Construction Manager as Constructor (CMc)
 - Design Build
 - Design Bid Build





U.S. General Services Administration

REAL ESTATE DIVISION

Shery Wittstock, Director
sheryl.wittstock@gsa.gov

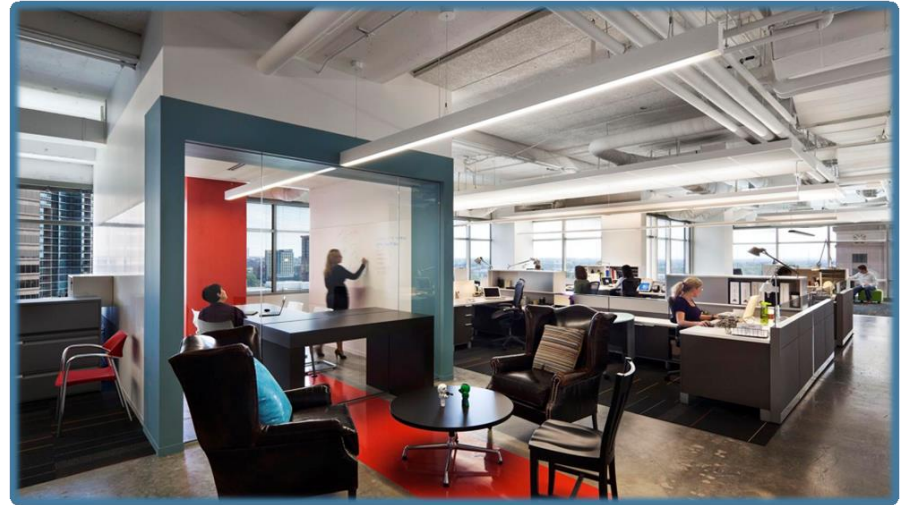
Real Estate Division

Manages the **acquisition of leased space** – and the **renovation** of existing leased and federal space – to support the federal government's **office space needs**.



Who We Are

- Lease Contracting Officers
- Project Managers
- Planning Managers
- Construction Control Representatives
- Interior Designers
- Workplace Specialists
- Contracting Officer's Representatives
- Customer Account Managers



National Weather Service

Cleveland, Ohio



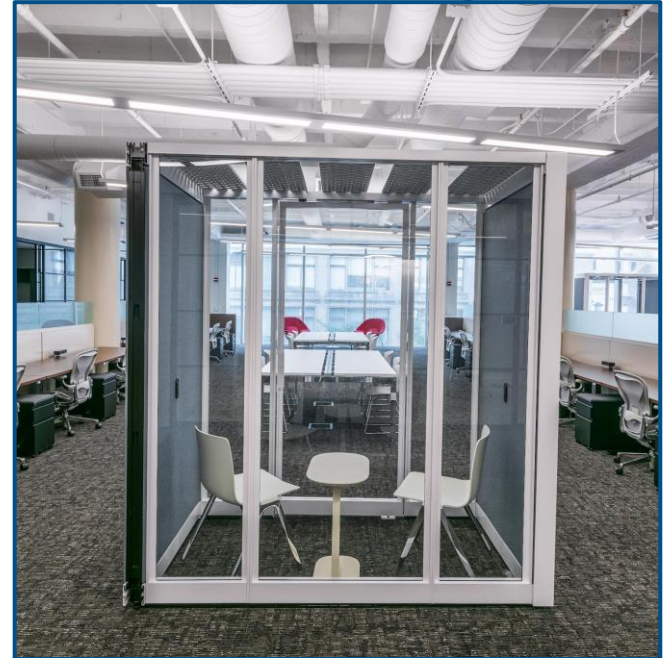
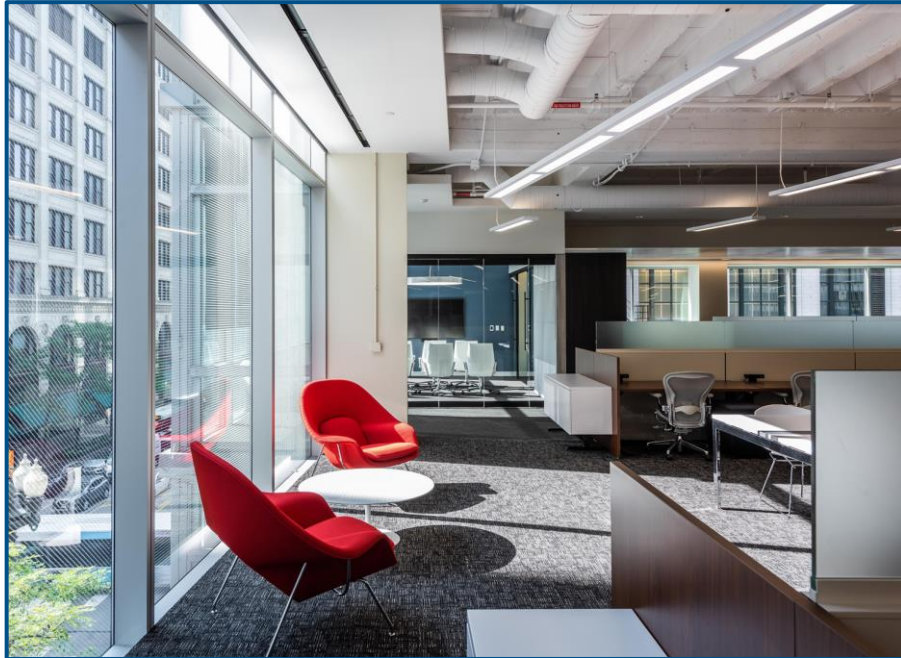


US Dept of Agriculture

Food Inspection and Forest and Park Services.



Department of the Army, Army Enterprise Marketing Office Chicago, Illinois





U.S. General Services Administration

ACQUISITION MANAGEMENT DIVISION (AMD)

Mike Wolff, Director
michael.wolff@gsa.gov

Acquisition Management Division

Responsible for managing the **procurement of design, construction, building services, and supplies** across the Region. Includes a robust small business program. We handle the entire range of the acquisition process from project planning through contract closeout.





Who We Are

- Four Operational Contracting Branches:
 - Building Services
 - Capital Construction & Customer Projects
 - Repairs & Alterations
 - Energy & Specialized Services
 - Teams Within Each Branch Include:
 - Contract Specialists/Contracting Officers
 - Procurement Analysts
 - Procurement Support Specialists
- Acquisition Programs & Quality Assurance Branch



How We Do It

- Contracting Vehicles:
 - Open Market - Full and Open
 - Open Market - with Various Small Business Set-Asides
 - Sole-Source 8(a)
 - Indefinite-Delivery Indefinite-Quantity
 - GSA Schedules



Want to Find Out More About AMD?

- Please visit us at one of our 3 Acquisition Tables:
 - Capital Construction
 - Repairs & Alterations
 - Building Services
- Talk to Our R5 PBS Industry Alliance Manager:
 - Kip Bordelon
 - kip.bordelon@gsa.gov



U.S. General Services Administration

THANK YOU & QUESTIONS

